

GTIKE FIVE DEPARTURE (RNAV)
(GTIKES,GTIKE) 27NOV25

CLEVELAND, OHIO
CLEVELAND-HOPKINS INTL (CLE)
(GTIKES,GTIKE) 27NOV25

CLEVELAND DEP CON
128.25 346.325
D-ATIS
132.375
CLNC DEL
125.05 273.45
CPDLC
GND CON
121.7 273.45
CLEVELAND TOWER
124.5 273.45

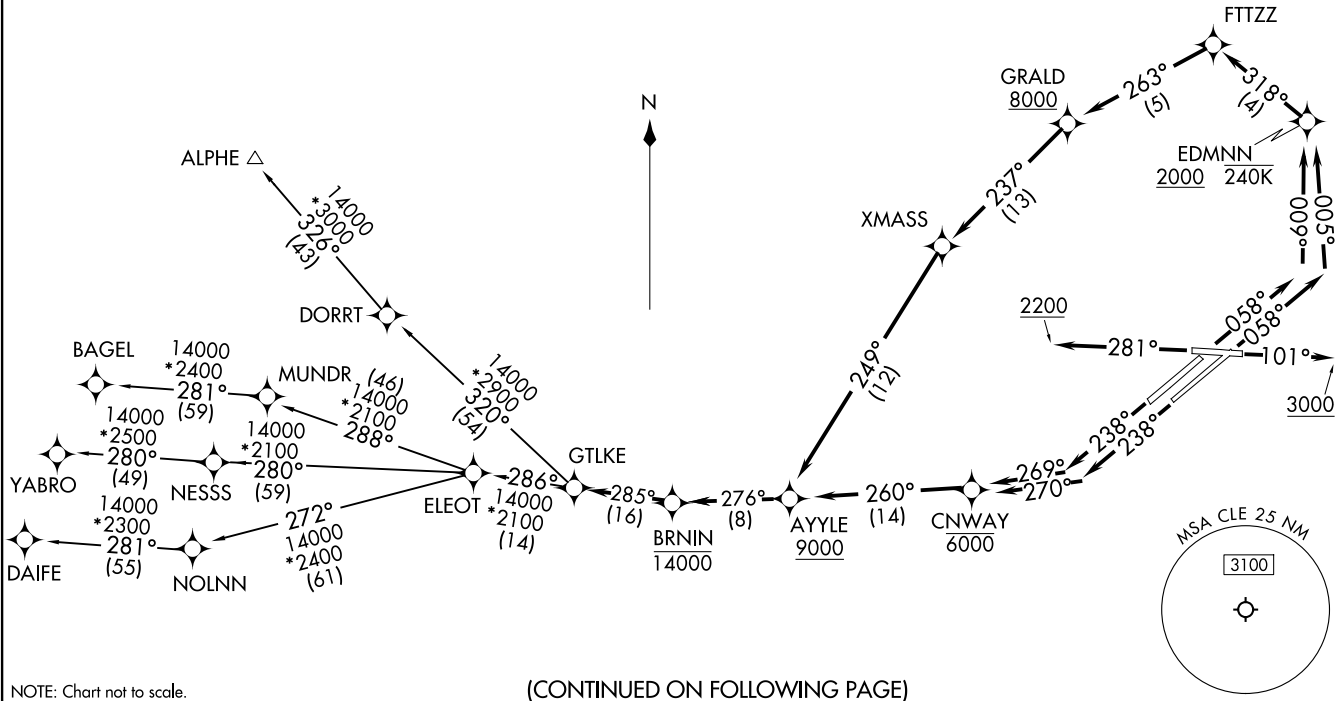
**TOP ALTITUDE:
14000**

RNAV 1 - DME/DME/IRU or GPS.
RADAR required.

TAKEOFF MINIMUMS

Rwys 6L/R, 24L/R, 28: Standard with minimum climb
of 500' per NM to 1300.

Rwy 10: Standard with minimum climb
of 500' per NM to 1600.



NOTE: Chart not to scale.

(CONTINUED ON FOLLOWING PAGE)

(GTIKES,GTIKE) 25331
GTIKE FIVE DEPARTURE (RNAV)

A-84 (FAA)
CLEVELAND-HOPKINS INTL (CLE)
CLEVELAND, OHIO

GTLKE FIVE DEPARTURE (RNAV)



DEPARTURE ROUTE DESCRIPTION

TAKEOFF RUNWAY 6L: Climb on heading 058° to intercept course 009° to cross EDMNN at or above 2000 and at or below 240K, then on track 318° to FTTZZ, then on track 263° to cross GRALD at or above 8000, then on track 237° to XMASS, then on track 249° to cross AYYLE at or above 9000, thence....

TAKEOFF RUNWAY 6R: Climb on heading 058° to intercept course 005° to cross EDMNN at or above 2000 and at or below 240K, then on track 318° to FTTZZ, then on track 263° to cross GRALD at or above 8000, then on track 237° to XMASS, then on track 249° to cross AYYLE at or above 9000, thence....

TAKEOFF RUNWAY 10: Climb on heading 101° to 3000, then as assigned by ATC for RADAR vectors to cross AYYLE at or above 9000, thence....

TAKEOFF RUNWAY 24L: Climb on heading 238° to intercept course 270° to cross CNWAY at or below 6000, then on track 260° to cross AYYLE at or above 9000, thence....

TAKEOFF RUNWAY 24R: Climb on heading 238° to intercept course 269° to cross CNWAY at or below 6000, then on track 260° to cross AYYLE at or above 9000, thence....

TAKEOFF RUNWAY 28: Climb on heading 281° to 2200, then as assigned by ATC for RADAR vectors to cross AYYLE at or above 9000, thence....

...on track 276° to cross BRNIN at or below 14000, then on track 285° to GTLKE then on (transition). Maintain 14000, expect filed altitude ten minutes after departure.

- ALPHE TRANSITION (GTLKE5.ALPHE)
- BAGEL TRANSITION (GTLKE5.BAGEL)
- DAIFE TRANSITION (GTLKE5.DAIFE)
- YABRO TRANSITION (GTLKE5.YABRO)

EC-2, 14 MAY 2026 to 11 JUN 2026

EC-2, 14 MAY 2026 to 11 JUN 2026