

ROKNN FOUR ARRIVAL (RNAV)
(ROKNN,ROKNN4) 07AUG25

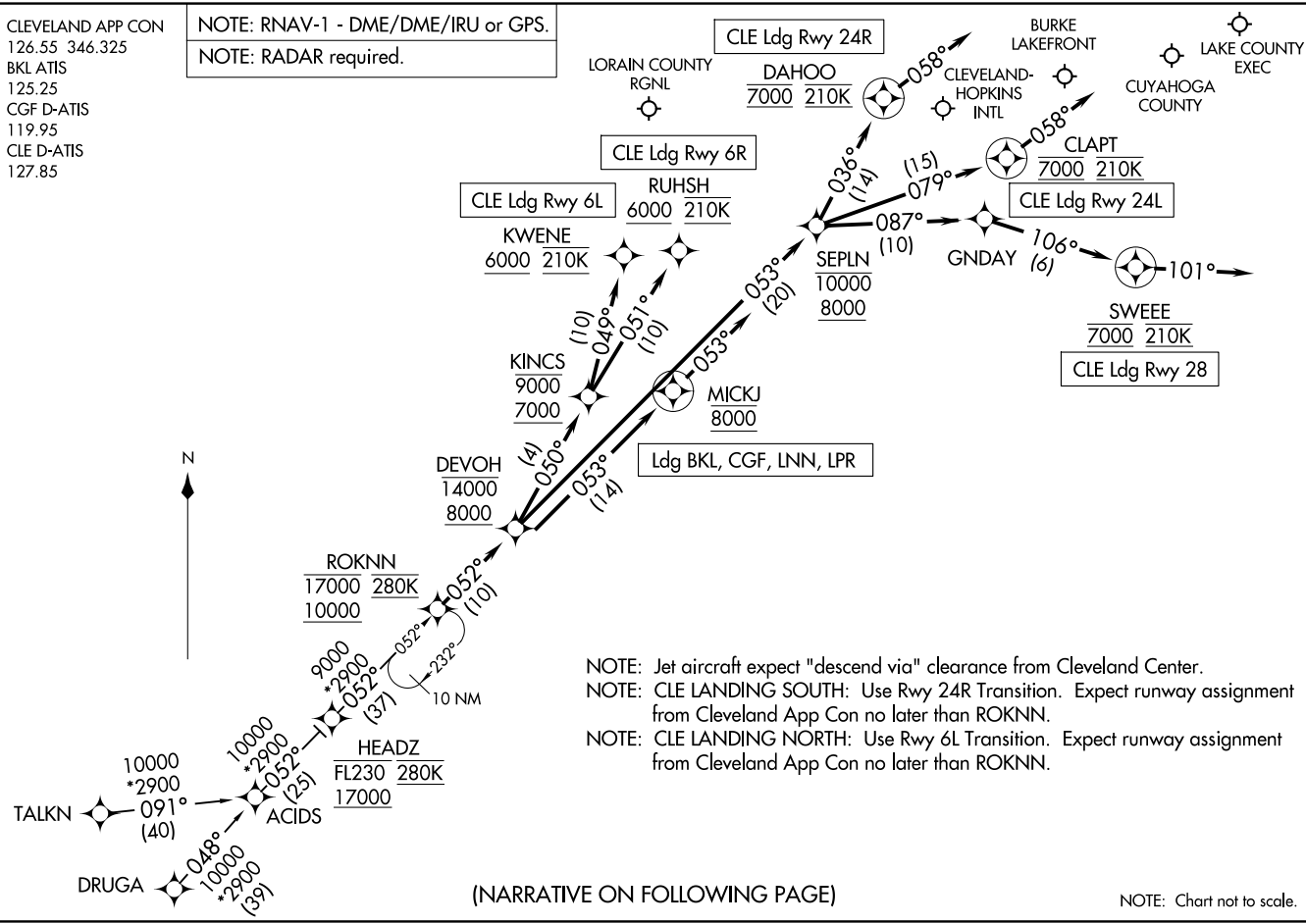
(ROKNN,ROKNN4) 25219
ROKNN FOUR ARRIVAL (RNAV)

AL-84 (FAA)

CLEVELAND, OHIO

CLEVELAND APP CON
126.55 346.325
BKL ATIS
125.25
CGF D-ATIS
119.95
CLE D-ATIS
127.85

NOTE: RNAV-1 - DME/DME/IRU or GPS.
NOTE: RADAR required.



(NARRATIVE ON FOLLOWING PAGE)

NOTE: Chart not to scale.

CLEVELAND, OHIO

ARRIVAL ROUTE DESCRIPTION

DRUGA TRANSITION (DRUGA.ROKNN4)

TALKN TRANSITION (TALKN.ROKNN4)

CLE: From ROKNN on track 052° to cross DEVOH between 8000 and 14000.

LANDING CLE RUNWAY 6L: From DEVOH on track 050° to cross KINCS between 7000 and 9000, then on track 049° to cross KWENE at or above 6000 and at 210K. Expect ILS, RNAV (RNP) or RNAV (GPS) approach from KWENE.

LANDING CLE RUNWAY 6R: From DEVOH on track 050° to cross KINCS between 7000 and 9000, then on track 051° to cross RUHSH at or above 6000 and at 210K. Expect ILS, RNAV (RNP) or RNAV (GPS) approach from RUHSH.

LANDING CLE RUNWAY 24L: From DEVOH on track 053° to cross SEPLN between 8000 and 10000, then on track 079° to cross CLAPT at 7000 and at 210K, then on heading 058°. Expect RNAV (RNP) approach from CLAPT or RADAR vectors to final approach course.

LANDING CLE RUNWAY 24R: From DEVOH on track 053° to cross SEPLN between 8000 and 10000, then on track 036° to cross DAHOO at 7000 and at 210K, then on heading 058°. Expect RNAV (RNP) approach from DAHOO or RADAR vectors to final approach course.

LANDING CLE RUNWAY 28: From DEVOH on track 053° to cross SEPLN between 8000 and 10000, then on track 087° to GNDAY, then on track 106° to cross SWEEE at 7000 and at 210K, then on heading 101°. Expect RADAR vectors to final approach course.

LANDING LPR/LNN/CGF/BKL: From ROKNN on track 052° to cross DEVOH between 8000 and 14000, then on track 053° to cross MICKJ at 8000, then on track 053°. Expect RADAR vectors to final approach course.

EC-2, 14 MAY 2026 to 11 JUN 2026

EC-2, 14 MAY 2026 to 11 JUN 2026