

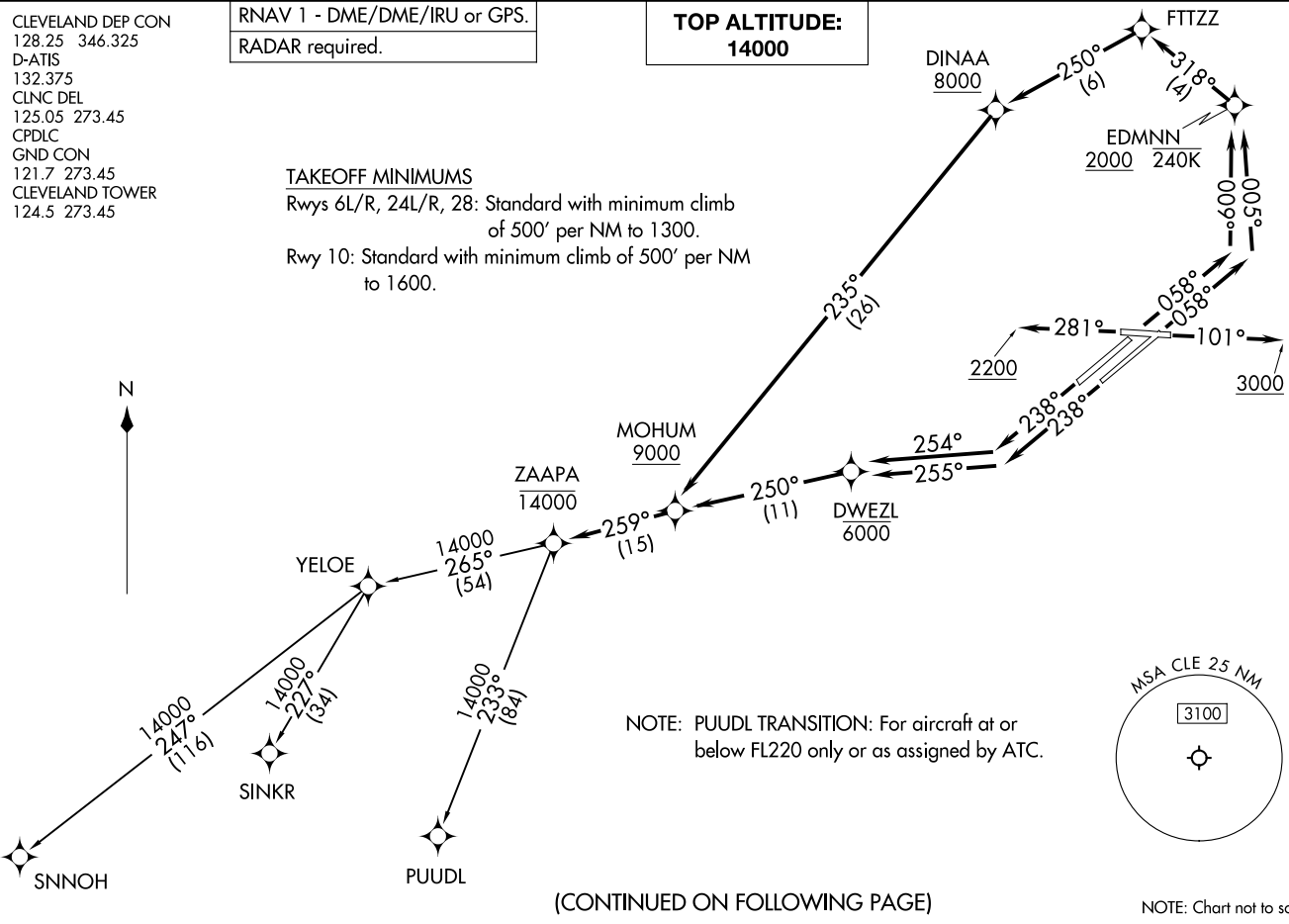
RNAV 1 - DME/DME/IRU or GPS.
RADAR required.

TOP ALTITUDE:
14000

CLEVELAND DEP CON
128.25 346.325
D-ATIS
132.375
CLNC DEL
125.05 273.45
CPDLC
GND CON
121.7 273.45
CLEVELAND TOWER
124.5 273.45

TAKEOFF MINIMUMS

Rwys 6L/R, 24L/R, 28: Standard with minimum climb of 500' per NM to 1300.
Rwy 10: Standard with minimum climb of 500' per NM to 1600.



NOTE: PUUDL TRANSITION: For aircraft at or below FL220 only or as assigned by ATC.

(CONTINUED ON FOLLOWING PAGE)

NOTE: Chart not to scale.

ZAAPA SIX DEPARTURE (RNAV)
(ZAAPA6.ZAAPA) 27NOV25

CLEVELAND, OHIO
CLEVELAND-HOPKINS INTL (CLE)

(ZAAPA6.ZAAPA) 25331
ZAAPA SIX DEPARTURE (RNAV)

A-84 (FAA)
CLEVELAND-HOPKINS INTL (CLE)
CLEVELAND, OHIO

ZAAPA SIX DEPARTURE (RNAV)



DEPARTURE ROUTE DESCRIPTION

TAKEOFF RUNWAY 6L: Climb on heading 058° to intercept course 009° to cross EDMNN at or above 2000 and at or below 240K, then on track 318° to FTTZZ, then on track 250° to cross DINAA at or above 8000, then on track 235° to cross MOHUM at or above 9000, thence....

TAKEOFF RUNWAY 6R: Climb on heading 058° to intercept course 005° to cross EDMNN at or above 2000 and at or below 240K, then on track 318° to FTTZZ, then on track 250° to cross DINAA at or above 8000, then on track 235° to cross MOHUM at or above 9000, thence....

TAKEOFF RUNWAY 10: Climb on heading 101° to 3000, then as assigned by ATC for RADAR vectors to cross MOHUM at or above 9000, thence....

TAKEOFF RUNWAY 24L: Climb on heading 238° to intercept course 255° to cross DWEZL at or below 6000, then on track 250° to cross MOHUM at or above 9000, thence....

TAKEOFF RUNWAY 24R: Climb on heading 238° to intercept course 254° to cross DWEZL at or below 6000, then on track 250° to cross MOHUM at or above 9000, thence....

TAKEOFF RUNWAY 28: Climb on heading 281° to 2200, then as assigned by ATC for RADAR vectors to cross MOHUM at or above 9000, thence....

....on track 259° to cross ZAAPA at or below 14000, then on (transition). Maintain 14000, expect filed altitude ten minutes after departure.

PUUDL TRANSITION (ZAAPA6.PUUDL)

SINKR TRANSITION (ZAAPA6.SINKR)

SNNOH TRANSITION (ZAAPA6.SNNOH)

EC-2, 14 MAY 2026 to 11 JUN 2026

EC-2, 14 MAY 2026 to 11 JUN 2026