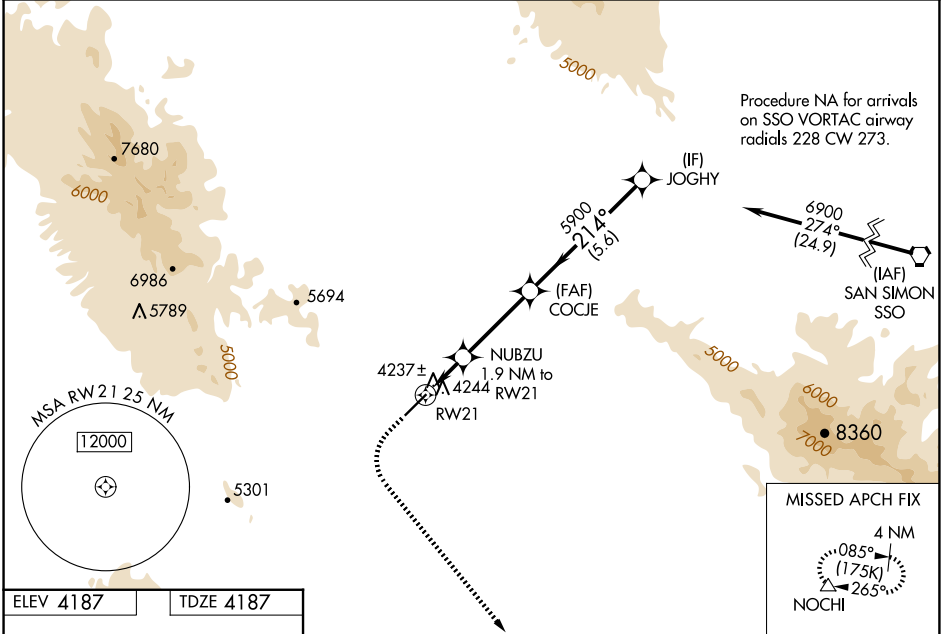


WAAS CH <b>77618</b> <b>W21A</b>	APP CRS <b>214°</b>	Rwy Ldg TDZE Apt Elev	<b>6095</b> <b>4187</b> <b>4187</b>
----------------------------------------	------------------------	-----------------------------	-------------------------------------------

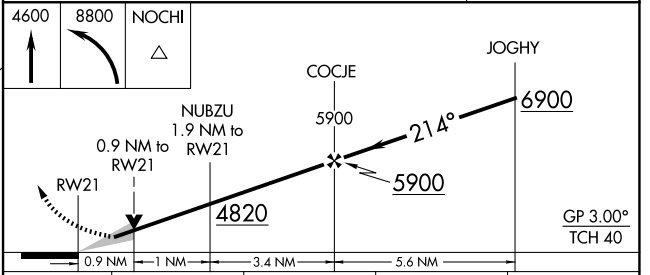
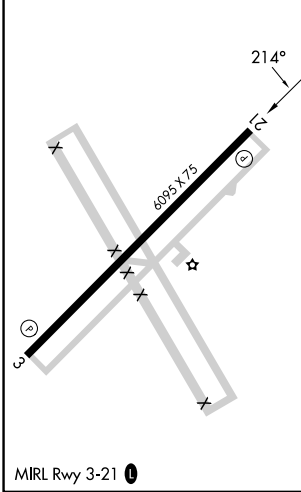
# RNAV (GPS) RWY 21

COCHISE COUNTY (P33)

RNP APCH - GPS.		MISSED APPROACH: Climb to 4600 then climbing left turn to 8800 direct NOCHI and hold, continue climb-in-hold 8800.
<p>▼ Baro-VNAV NA when using Douglas Bisbee altimeter setting. For uncompensated Baro-VNAV systems, LNAV/VNAV NA below -23°C or above 54°C. When local altimeter setting not received, use Douglas Bisbee altimeter setting and increase LPV DA to 4555 feet and all visibilities ¼ SM; increase LNAV/VNAV DA to 4555 feet and all visibilities ¼ SM; increase all MDAs 120 feet.</p>		
AWOS-3PT <b>119.025</b>	ALBUQUERQUE CENTER <b>134.45 327.15</b>	UNICOM <b>122.8 (CTAF) 0</b>



ELEV 4187	TDZE 4187
-----------	-----------



CATEGORY	A	B	C	D
LPV DA	4437-7/8	250 (300-7/8)		NA
LNAV/VNAV DA	4437-7/8	250 (300-7/8)		NA
LNAV MDA	4520-1	333 (400-1)		NA
CIRCLING	4600-1	4660-1		NA
	413 (500-1)	473 (500-1)		

SW-4, 14 MAY 2026 to 11 JUN 2026

SW-4, 14 MAY 2026 to 11 JUN 2026