

LOC/DME I-AHI 109.1 Chan 28	APP CRS 352°	Rwy Ldg TDZE 6118 Apt Elev 6187
--	------------------------	---

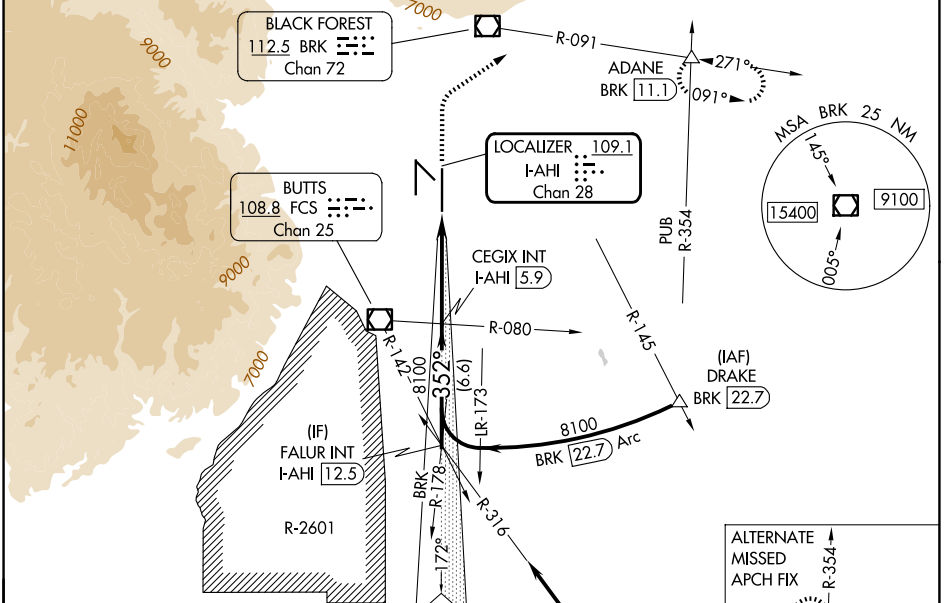
ILS or LOC RWY 35R

CITY OF COLORADO SPRINGS MUNI (COS)

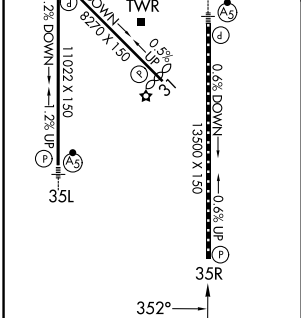
⚠ RADAR required when R-2601 in use.

⚠ MISSED APPROACH: Climb to 6700 then climbing right turn to 9000 on heading 047° and on BRK VOR/DME R-091 to ADANE INT/BRK 11.1 DME and hold.

ATIS 125.0 254.3	SPRINGS APP CON 124.0 257.875	SPRINGS TOWER 119.9 360.6	GND CON 121.7 348.6	CLNC DEL 134.45 363.125
----------------------------	---	-------------------------------------	-------------------------------	-----------------------------------



ELEV 6187	D TDZE 6118
MIRL Rwy 13-31	
HIRL Rws 17R-35L and 17L-35R	
REIL Rws 13, 17R, 31 and 35R	
TDZ/CL Rws 17L and 35R	



Procedure NA for arrival on PUB VORTAC airway radials 267 CW 354.

IAF PUEBLO 116.7 PUB Chan 114

ALTERNATE MISSED APCH FIX: R-245, R-354, R-174, R-114, DRAKE PUB 118.7, 112.1 HGO Chan 58

VGSI and ILS glidepath not coincident (VGSI Angle 3.00/TCH 71).

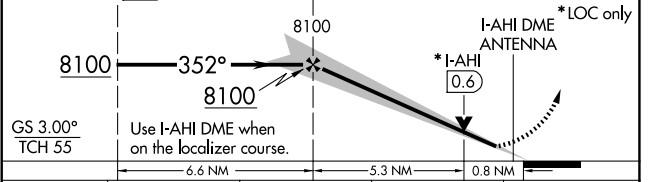
FALUR INT I-AHI 12.5

CEGIX INT I-AHI 5.9

6700 9000

BRK R-091

ADANE



CATEGORY	A	B	C	D
S-ILS 35R	6318/40 200 (200-¾)			
S-LOC 35R	6420/55	302 (300-1)	6420/45	302 (300-¾)
CIRCLING	6740-1 553 (600-1)	6800-1 613 (700-1)	7040-2½ 853 (900-2½)	7260-3 1073 (1100-3)

FAF to MAP 6.1 NM					
Knots	60	90	120	150	180
Min:Sec	6:06	4:04	3:03	2:26	2:02

SW-1, 14 MAY 2026 to 11 JUN 2026

SW-1, 14 MAY 2026 to 11 JUN 2026