

# OZZZY FIVE ARRIVAL (RNAV)

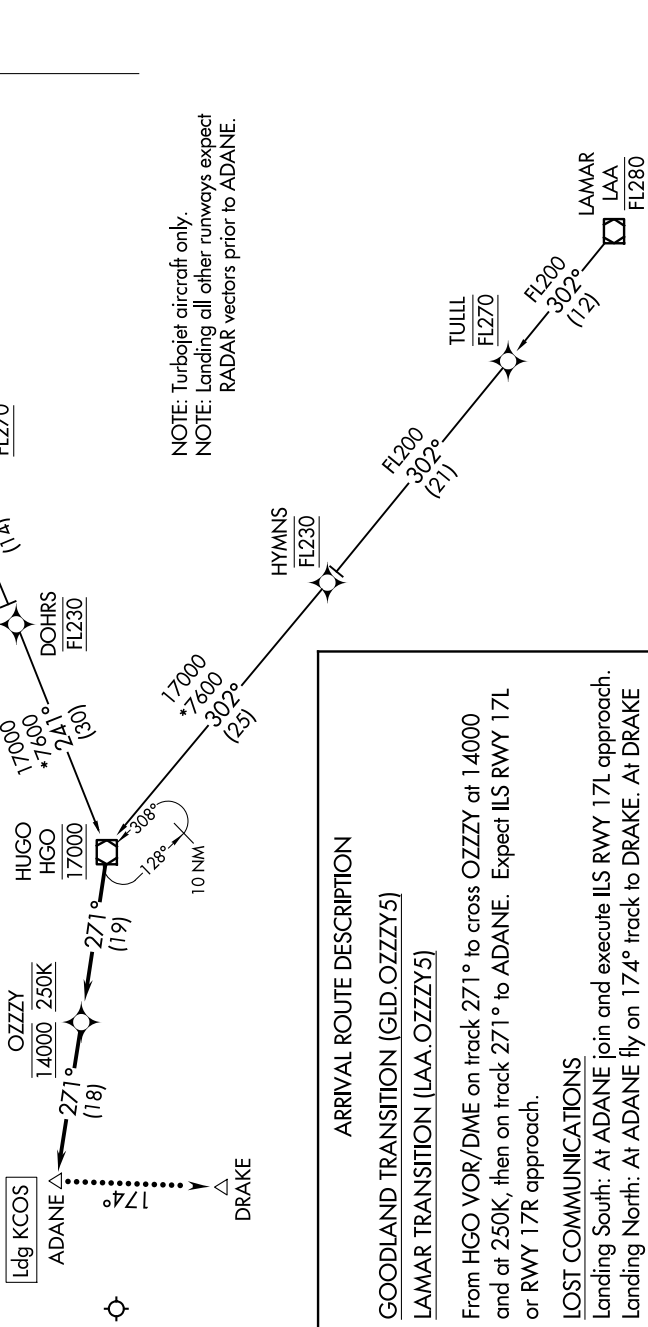
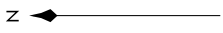
AL-87 (FAA)

CITY OF COLORADO SPRINGS MUNI (COS)  
COLORADO SPRINGS, COLORADO

SW-1, 14 MAY 2026 to 11 JUN 2026

RNAV 1 - DME/DME/IRU or GPS  
RADAR required

SPRINGS APP CON  
124.0 257.875  
ATIS  
125.0 254.3



NOTE: Turbojet aircraft only.  
NOTE: Landing all other runways expect  
RADAR vectors prior to ADANE.

NOTE: Chart not to scale.

### ARRIVAL ROUTE DESCRIPTION

GOODLAND TRANSITION (GLD.OZZZY5)

LAMAR TRANSITION (LAA.OZZZY5)

From HGO VOR/DME on track 271° to cross OZZZY at 14000 and at 250K, then on track 271° to ADANE. Expect ILS RWY 17L or RWY 17R approach.

### LOST COMMUNICATIONS

Landing South: At ADANE join and execute ILS RWY 17L approach.  
Landing North: At ADANE fly on 174° track to DRAKE. At DRAKE join and execute ILS RWY 35L approach.

SW-1, 14 MAY 2026 to 11 JUN 2026

# OZZZY FIVE ARRIVAL (RNAV)