

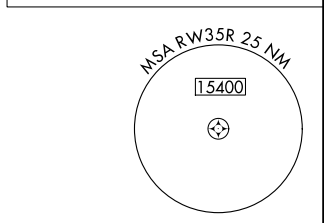
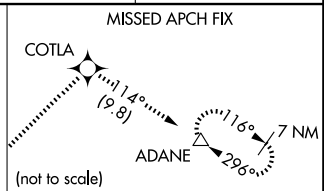
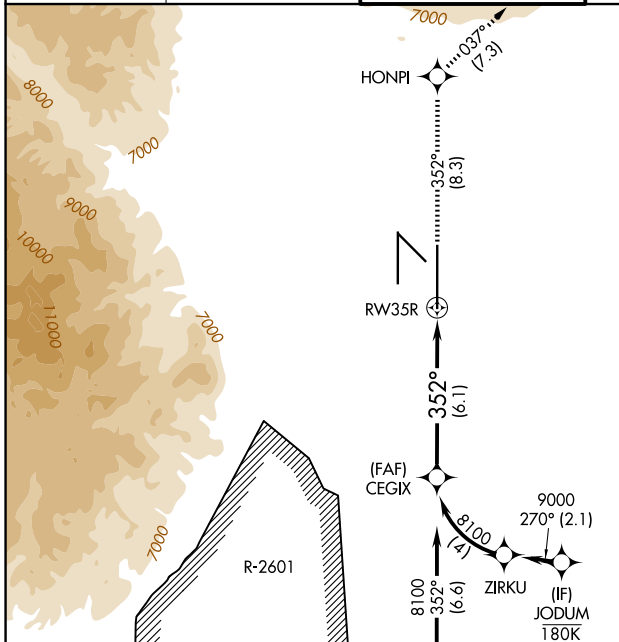
# RNAV (RNP) Z RWY 35R

CITY OF COLORADO SPRINGS MUNI (COS)

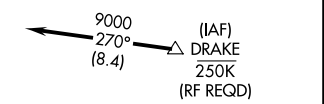
APP CRS	Rwy Ldg	<b>13500</b>
<b>352°</b>	TDZE	<b>6118</b>
	Apt Elev	<b>6187</b>

For uncompensated Baro-VNAV systems, procedure NA below -21°C (-5°F) or above 45°C (113°F). GPS required. MISSED APPROACH: Climb to 9000 on track 352° to HONPI and track 037° to COTLA and track 114° to ADANE and hold.

ATIS <b>125.0 254.3</b>	SPRINGS APP CON <b>124.0 257.875</b>	SPRINGS TOWER <b>119.9 360.6</b>	GND CON <b>121.7 348.6</b>	CLNC DEL <b>134.45 363.125</b>
----------------------------	---	-------------------------------------	-------------------------------	-----------------------------------



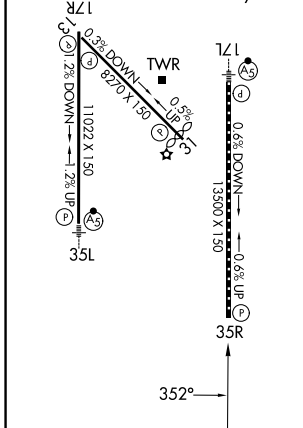
Procedure NA for arrivals at DRAKE on V83 southeast bound and V389 southbound



Procedure NA for arrivals at FSHER on V244 eastbound.

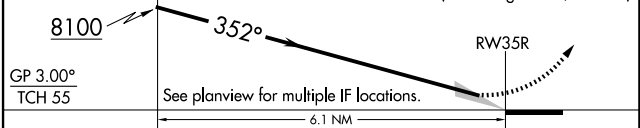
ELEV	<b>6187</b>	D	TDZE	<b>6118</b>
------	-------------	---	------	-------------

HIRL Rwy 17R-35L and 17L-35R  
REIL Rwy 13, 17R, 31, and 35R  
TDZ/CL Rwy 17L and 35R  
MIRL Rwy 13-31



9000	HONPI	tr 037°	COTLA	tr 114°	ADANE
tr 352°					△

VGSI and RNAV glidepath not coincident (VGSI Angle 3.00/TCH 71).



CATEGORY	A	B	C	D
RNP 0.30 DA		6461/60	343 (300-1¼)	

**AUTHORIZATION REQUIRED**

SW-1, 14 MAY 2026 to 11 JUN 2026

SW-1, 14 MAY 2026 to 11 JUN 2026