

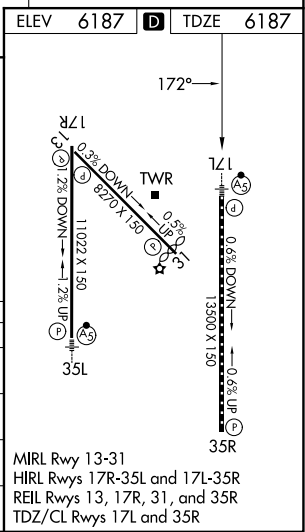
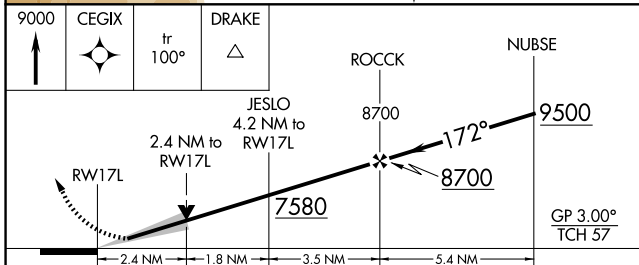
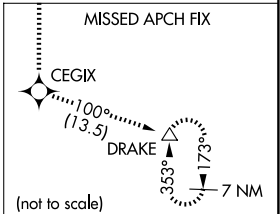
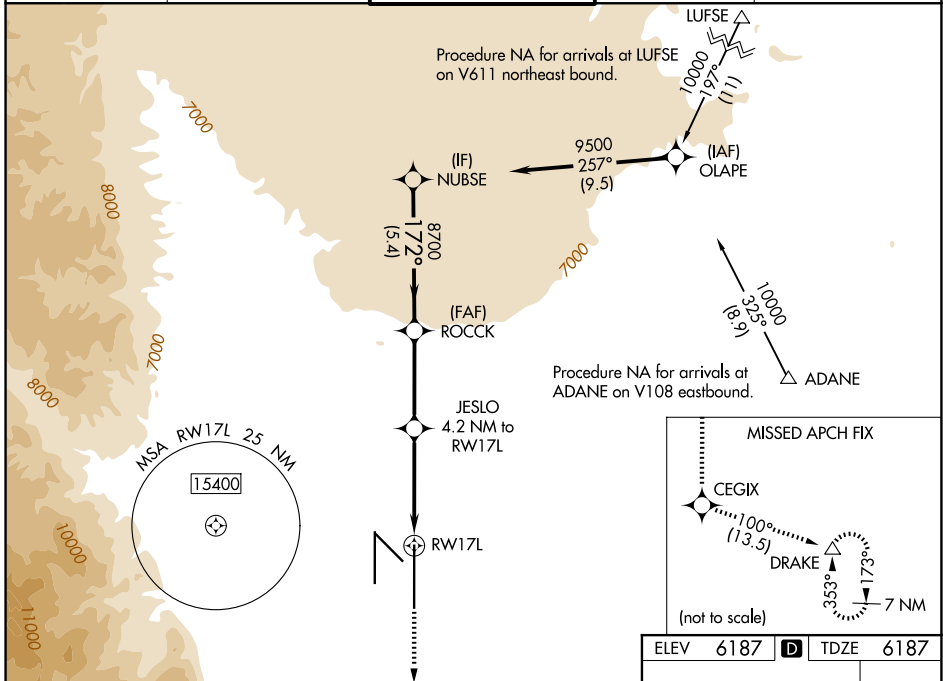
WAAS CH 69618 W17A	APP CRS 172°	Rwy Ldg 13500 TDZE 6187 Apt Elev 6187
--	------------------------	--

RNAV (GPS) Y RWY 17L

CITY OF COLORADO SPRINGS MUNI (COS)

RNP APCH - GPS.	MALSR 	MISSED APPROACH: Climb to 9000 direct CEGIX and on track 100° to DRAKE and hold.
For uncompensated Baro-VNAV systems, LNAV/VNAV NA below -21°C or above 44°C. For inop MALSR, increase LNAV Cat C/D visibility to 2½ SM.		

ATIS 125.0 254.3	SPRINGS APP CON 124.0 257.875	SPRINGS TOWER 119.9 360.6	GND CON 121.7 348.6	CLNC DEL 134.45 363.125
----------------------------	---	-------------------------------------	-------------------------------	-----------------------------------



CATEGORY	A	B	C	D
LPV DA		6387/18	200 (200-½)	
LNAV/VNAV DA		6602/45	415 (500-¾)	
LNAV MDA	7000/24 813 (900-½)	7000/40 813 (900-¾)	7000-1⅞	813 (900-1⅞)
CIRCLING	7000-1¼	813 (900-1¼)	7040-2½ 853 (900-2½)	7260-3 1073 (1100-3)

SW-1, 14 MAY 2026 to 11 JUN 2026

SW-1, 14 MAY 2026 to 11 JUN 2026