


WAAS CH 49112 W35A	APP CRS 352°	Rwy Ldg 11022 TDZE 6075 Apt Elev 6187
--	------------------------	--

RNAV (GPS) Y RWY 35L

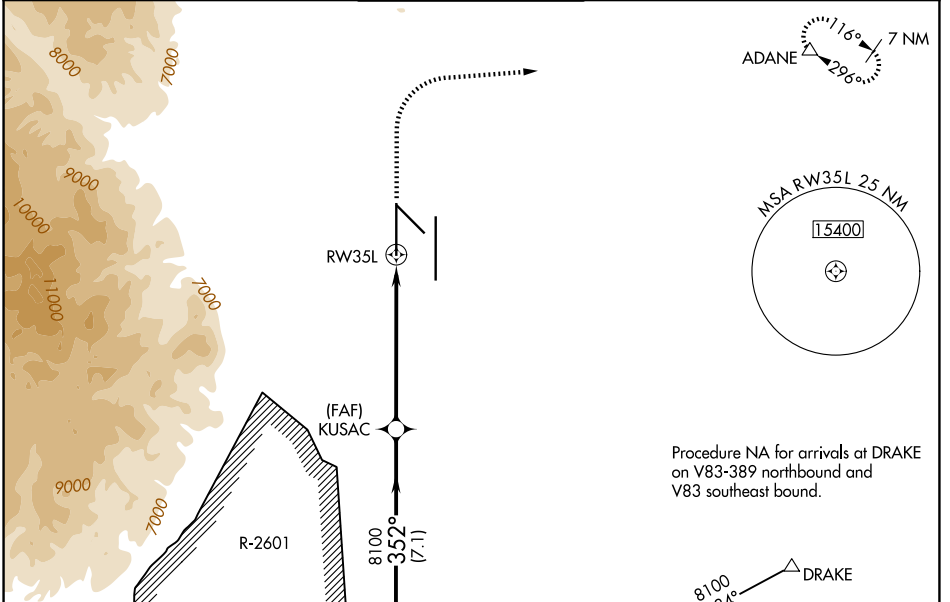
CITY OF COLORADO SPRINGS MUNI (COS)

⚠ For uncompensated Baro-VNAV systems, LNAV/VNAV NA below -21°C (-5°F) or above 54°C (130°F). DME/DME RNP-0.3 NA. For inop MALSR increase LNAV Cat C and D visibility to RVR 5500. RADAR monitoring required when R-2601 in use. # RVR 1800 authorized with use of FD or AP or HUD to DA.

MALSR 

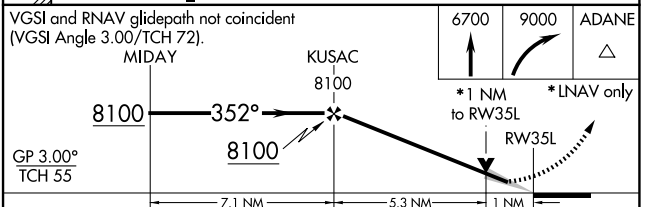
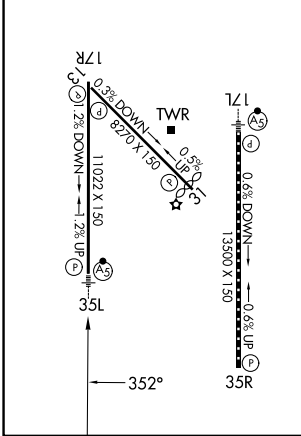
MISSED APPROACH: Climb to 6700 then climbing right turn to 9000 direct ADANE and hold.

ATIS 125.0 254.3	SPRINGS APP CON 124.0 257.875	SPRINGS TOWER 119.9 360.6	GND CON 121.7 348.6	CLNC DEL 134.45 363.125
----------------------------	---	-------------------------------------	-------------------------------	-----------------------------------



ELEV 6187	D	TDZE 6075
------------------	----------	------------------

MIRL Rwy 13-31
HIRL Rwy 17R-35L and 17L-35R
REIL Rwy 13, 17R, 31 and 35R
TDZ/CL Rwy 17L and 35R



CATEGORY	A	B	C	D
LPV DA #		6275/24	200 (100-1/2)	
LNAV/VNAV DA		6380/30	305 (200-5/8)	
LNAV MDA	6440/24	365 (300-1/2)	6440/35	365 (300-5/8)
CIRCLING	6740-1 553 (600-1)	6800-1 613 (700-1)	7040-2 1/2 853 (900-2 1/2)	7260-3 1073 (1100-3)

SW-1, 14 MAY 2026 to 11 JUN 2026

SW-1, 14 MAY 2026 to 11 JUN 2026