

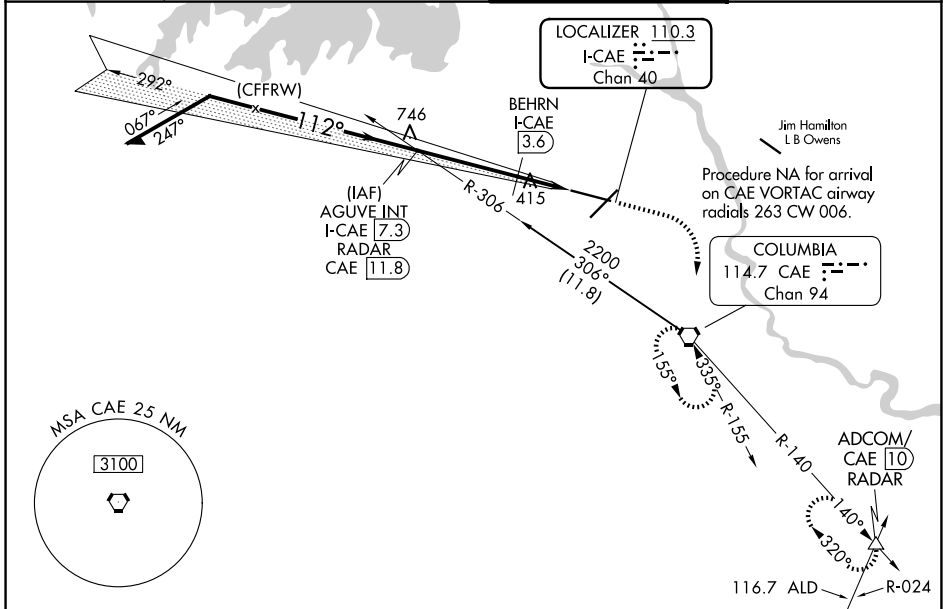
LOC/DME I-CAE 110.3 Chan 40	APP CRS 112°	Rwy Ldg 8601 TDZE 236 Apt Elev 236
--	------------------------	--

ILS or LOC RWY 11

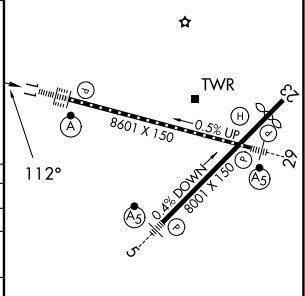
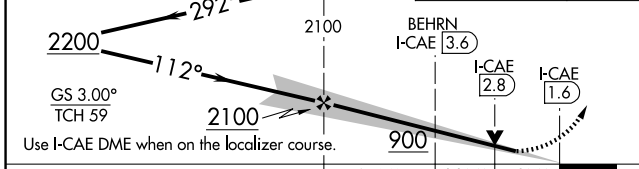
COLUMBIA METRO (CAE)

DME or RADAR required for LOC only.	ALSF-2 	MISSED APPROACH: Climb to 1100 then climbing right turn to 2300 direct CAE VORTAC and hold, continue climb-in-hold to 2300. (TACAN aircraft confine on CAE VORTAC R-140 to ADCOM IN/CAE VORTAC 10 DME and hold NW, right turn, 140° inbound)
<p>▼ For inop ALS, increase S-ILS 11 Cat E visibility to RVR 4000, S-LOC 11 Cats C/D/E visibility to 1½ SM, and BEHRN Minimums S-LOC 11 Cat E visibility to 1½ SM.</p> <p>▲</p>		

ATIS 120.15	COLUMBIA APP CON 124.15 338.2 (110°-289°) 133.4 285.6 (290°-109°)	COLUMBIA TOWER 119.5 257.8	GND CON 121.9 348.6
-----------------------	---	--------------------------------------	-------------------------------



Remain within 15 NM	AGUVE INT I-CAE 7.3 RADAR	1100	2300	CAE	ELEV 236	TDZE 236
---------------------	---------------------------	------	------	-----	----------	----------



CATEGORY	A	B	C	D	E
S-ILS 11	436/18 200 (200-½)				
S-LOC 11	900/24	664 (700-½)	900-1½ 664 (700-1½)		
CIRCLING	900-1	664 (700-1)	1040-2¼ 804 (900-2¼)	1040-2½ 804 (900-2½)	1040-2¾ 804 (900-2¾)
BEHRN MINIMUMS (DME REQUIRED)					
S-LOC 11	680/24	444 (500-½)	680/45 444 (500-¾)		
CIRCLING	740-1 504 (600-1)	860-1 624 (700-1)	1040-2¼ 804 (900-2¼)	1040-2½ 804 (900-2½)	1040-2¾ 804 (900-2¾)

REIL Rwy 23 TDZ/CL Rwy 11 HIRL Rlys 5-23 and 11-29	FAF to MAP 5.7 NM				
Knots	60	90	120	150	180
Min:Sec	5:42	3:48	2:51	2:17	1:54

SE-2, 14 MAY 2026 to 11 JUN 2026

SE-2, 14 MAY 2026 to 11 JUN 2026