

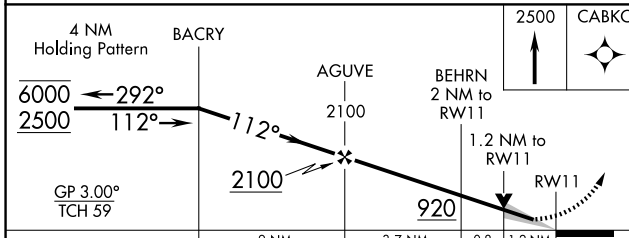
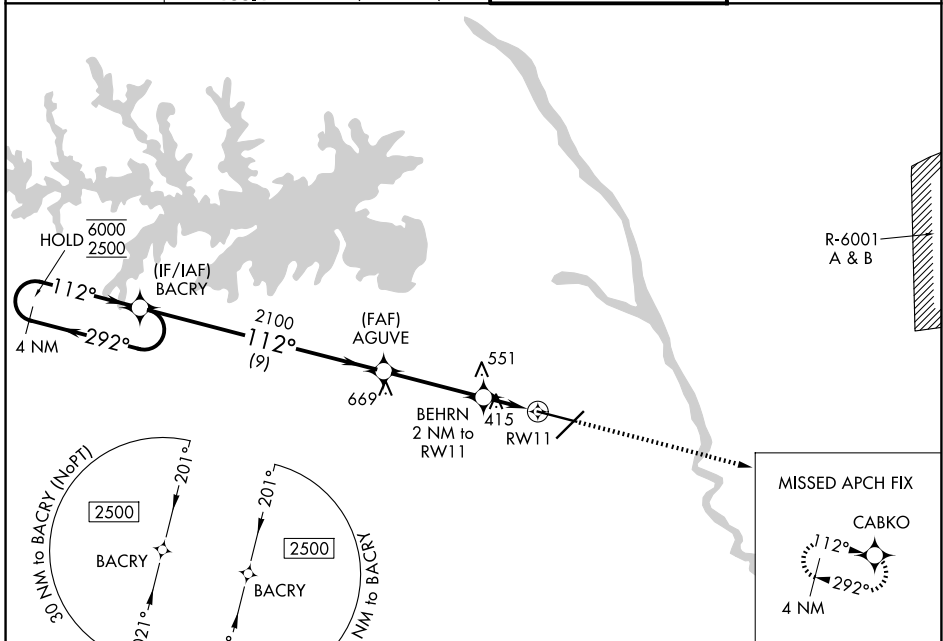
WAAS CH 61014 W11A	APP CRS 112°	Rwy Ldg TDZE 236 Apt Elev 236	8601
--	------------------------	---	-------------

RNAV (GPS) RWY 11

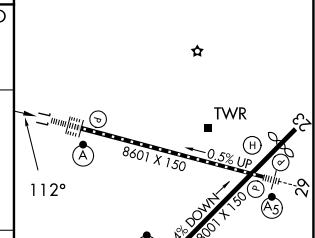
COLUMBIA METRO (CAE)

RNP APCH-GPS.	ALSIF-2	MISSED APPROACH: Climb to 2500 direct CABKO and hold.
<p>For uncompensated Baro-VNAV systems, LNAV/VNAV NA below -6°C or above 54°C.</p>		

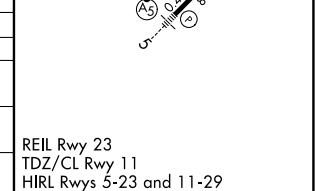
ATIS 120.15	COLUMBIA APP CON 124.15 338.2 (110°-289°) 133.4 285.6 (290°-109°)	COLUMBIA TOWER 119.5 257.8	GND CON 121.9 348.6
-----------------------	---	--------------------------------------	-------------------------------



ELEV 236	TDZE 236
----------	----------



CATEGORY	A	B	C	D
LPV DA		436/18	200 (200-1/2)	
LNAV/VNAV DA		673/40	437 (500-3/4)	
LNAV MDA	680/24	444 (500-1/2)	680/45	444 (500-7/8)
CIRCLING	740-1 504 (600-1)	860-1 624 (700-1)	1040-2 1/4 804 (900-2 1/4)	1040-2 1/2 804 (900-2 1/2)



SE-2, 14 MAY 2026 to 11 JUN 2026

SE-2, 14 MAY 2026 to 11 JUN 2026