

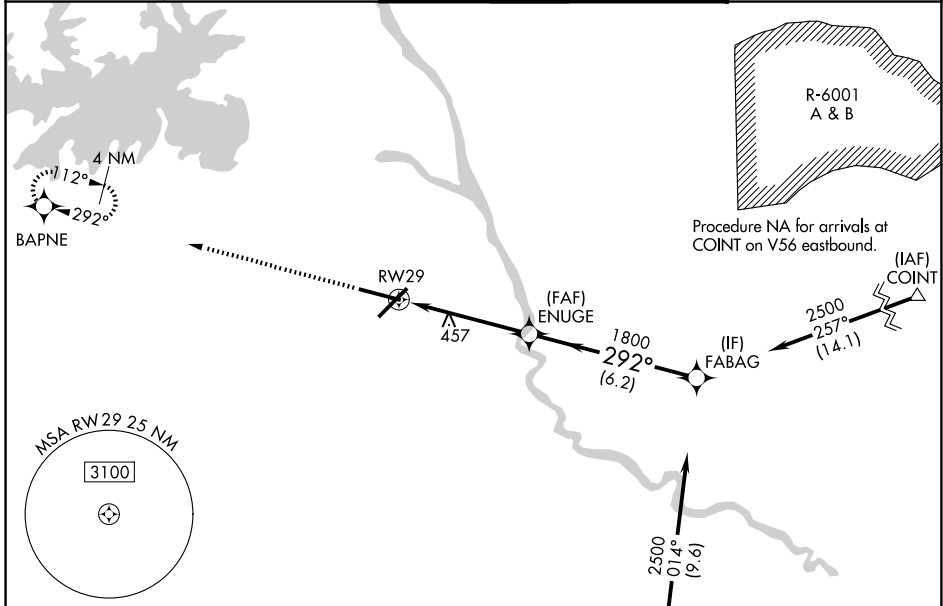
WAAS CH 53414 W29A	APP CRS 292°	Rwy Ldg TDZE 227 Apt Elev 236	8506
--	------------------------	---	-------------

RNAV (GPS) RWY 29

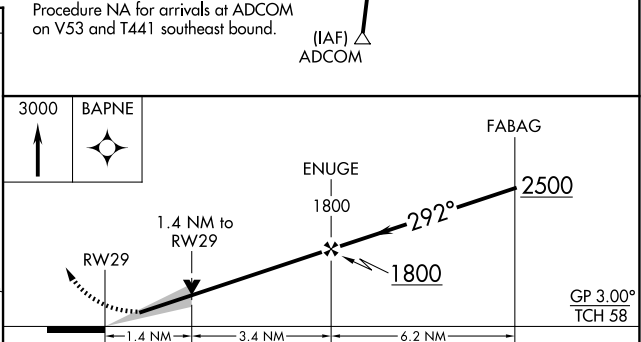
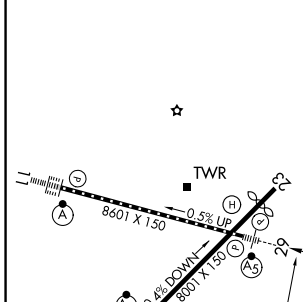
COLUMBIA METRO (CAE)

RNP APCH - GPS.	MALS R	MISSED APPROACH: Climb to 3000 direct BAPNE and hold.
<p>▼ For uncompensated Baro-VNAV systems, LNAV/VNAV NA below -5°C or above 54°C. For inop ALS, increase LNAV/VNAV all Cats visibility to RVR 4500 and LNAV Cats C and D to 1$\frac{3}{8}$ SM.</p> <p>*RVR 1800 authorized with use of FD or AP or HUD to DA.</p>		

ATIS 120.15	COLUMBIA APP CON 124.15 338.2 (110°-289°) 133.4 285.6 (290°-109°)	COLUMBIA TOWER 119.5 257.8	GND CON 121.9 348.6
-----------------------	---	--------------------------------------	-------------------------------



ELEV 236	D	TDZE 227
----------	----------	----------



CATEGORY	A	B	C	D
LPV DA*	427/24 200 (200- $\frac{1}{2}$)			
LNAV/VNAV DA	544/24 317 (400- $\frac{1}{2}$)		544/40 317 (400- $\frac{3}{4}$)	
LNAV MDA	720/24 493 (500- $\frac{1}{2}$)		720/50 493 (500-1)	
CIRCLING	740-1 504 (600-1)	860-1 624 (700-1)	1040-2 $\frac{1}{4}$ 804 (900-2 $\frac{1}{4}$)	1040-2 $\frac{1}{2}$ 804 (900-2 $\frac{1}{2}$)

REIL Rwy 23
TDZ/CL Rwy 11
HIRL Rwy 5-23 and 11-29

COLUMBIA, SOUTH CAROLINA
Amdt 2 17APR25

33°56'N-81°07'W

RNAV (GPS) RWY 29

SE-2, 14 MAY 2026 to 11 JUN 2026

SE-2, 14 MAY 2026 to 11 JUN 2026