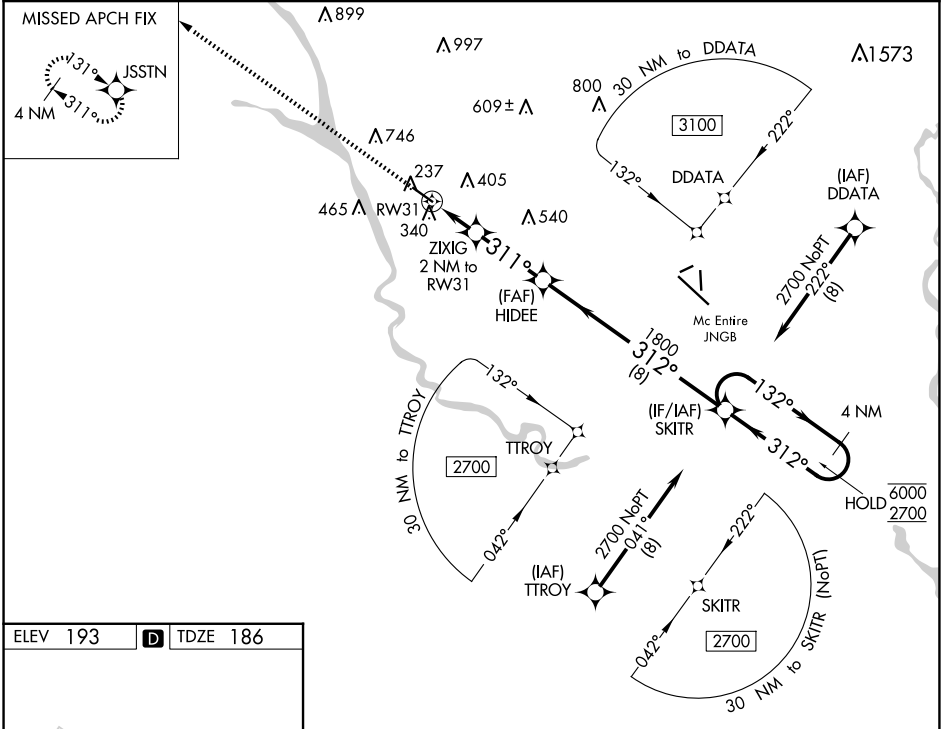


WAAS CH <b>42742</b> <b>W31A</b>	APP CRS <b>311°</b>	Rwy Idg TDZE <b>186</b> Apt Elev <b>193</b>	<b>4599</b>
--	------------------------	---	-------------

# RNAV (GPS) RWY 31

JIM HAMILTON L B OWENS (CUB)

RNP APCH.		MISSED APPROACH: Climb to 2700 direct JSSTN and hold.	
▼ Rwy 31 helicopter visibility reduction below 3/4 SM NA. For uncompensated Baro-VNAV systems, LNAV/VNAV NA below -6°C or above 54°C.			
ASOS <b>118.675</b>	COLUMBIA APP CON <b>133.4 285.6</b>	CLNC DEL <b>124.4</b>	UNICOM <b>123.075 (CTAF) 0</b>



ELEV 193	<b>D</b>	TDZE 186
----------	----------	----------

REIL Rwy 13 and 31  
MIRL Rwy 13-31

2700 JSSTN	VGSi and RNAV glidepath not coincident (VGSi Angle 3.00/TCH 20).		4 NM Holding Pattern
*LNAV only.	ZIXIG 2 NM to RW31	HIDEE 1800	SKITR
RW31	*1.4 NM to RW31	860*	1800
		311°	312°
		132°	6000
			2700
			GP 3.00° TCH 40
	1.4 NM	0.8	2.9 NM
			8 NM

CATEGORY	A	B	C	D
LPV DA		436-3/4	250 (300-3/4)	
LNAV/VNAV DA		551-1	365 (400-1)	
LNAV MDA	640-1	454 (500-1)	640-1 3/8	454 (500-1 3/8)

SE-2, 14 MAY 2026 to 11 JUN 2026

SE-2, 14 MAY 2026 to 11 JUN 2026