

COLUMBUS, MISSISSIPPI

HI-ILS or LOC Z RWY 13C

LOC I-CBM 109.3	APCH CRS 135°	Rwy Ldg TDZE Arpt Elev	13C 12,004 196 218	13L 8016 194 218
---------------------------	-------------------------	------------------------------	--	--

[USAF]

COLUMBUS AFB (KCBM)

▲ * When ALS inop, increase RVR to 40, vis to ¼ mile.
 ** When ALS inop, increase vis to 1/8 miles.



MISSED APPROACH: Climb heading 135° to intercept the CBM VORTAC R-135 outbound to WEEWA (CBM R-135/20 DME) and hold. Maintain 4000

ATIS ★
115.2 273.5

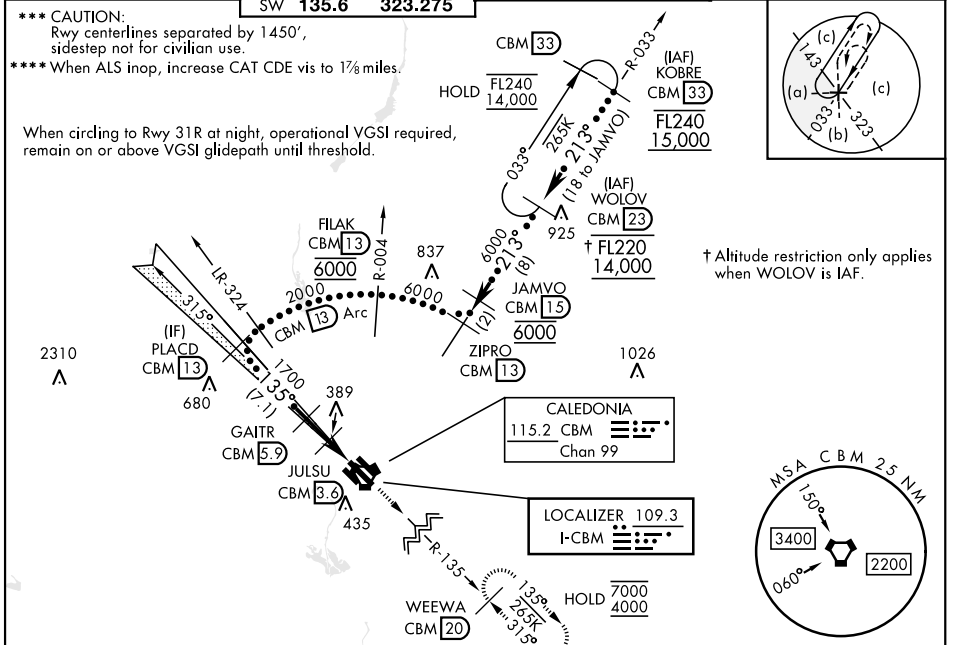
APP CON ★
 N **126.075 239.25**
 SE **134.55 350.3**
 SW **135.6 323.275**

TOWER ★
126.65 379.925

GND CON ★
121.9 275.8

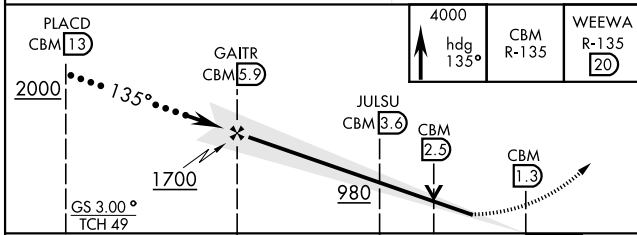
*** CAUTION:
 Rwy centerlines separated by 1450',
 sidestep not for civilian use.
 **** When ALS inop, increase CAT CDE vis to 1/8 miles.

When circling to Rwy 31R at night, operational VGSI required,
 remain on or above VGSI glidepath until threshold.



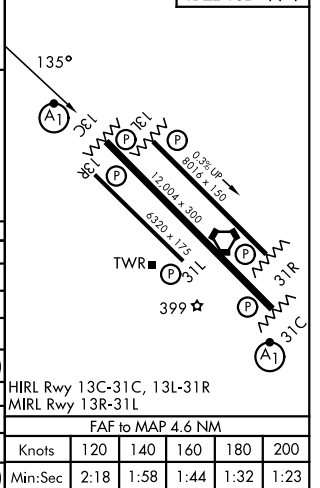
† Altitude restriction only applies when WOLOV is IAF.

EMERG SAFE ALT 100 NM 3700 FROM CBM



ELEV 218	TDZE 13C 196
	TDZE 13L 194

CATEGORY	C	D	E
S-ILS 13C *	396/24	200	(200-½)
S-LOC 13C **	640/45	444	(500-7/8)
SIDESTEP *** RWY 13L	640-1 3/8	446	(500-13/8)
CIRCLING	740-1 1/2 522 (600-1 1/2)	880-2 662 (700-2)	1240-3 1022 (1100-3)
LOCAL ALTIMETER, WITHOUT LAST STEPDOWN FIX			
S-LOC 13C ****	840-1 3/8	644	(700-1 3/8)
SIDESTEP *** RWY 13L	840-1 7/8	646	(700-1 7/8)
CIRCLING	840-1 7/8 622 (700-1 7/8)	880-2 662 (700-2)	1240-3 1022 (1100-3)



COLUMBUS, MISSISSIPPI

33° 39' N-88° 27' W

COLUMBUS AFB (KCBM)

Amdt 3 19MAR26

HI-ILS or LOC Z RWY 13C

SC-4, 14 MAY 2026 to 11 JUN 2026

SC-4, 14 MAY 2026 to 11 JUN 2026