

COLUMBUS, MISSISSIPPI

HI-ILS or LOC Z RWY 31C

LOC I-TBB 108.7	APCH CRS 315°	31C Rwy Ldg 12,004 TDZE 213 Arprt Elev 218	31R 8016 218 218
---------------------------	-------------------------	--	--

[USAF]

COLUMBUS AFB (KCBM)

▼ * When ALS inop, increase RVR to 40, vis to ¾ mile.
 ** When ALS inop, increase vis to 1¼ mile.
 † When ALS inop, increase vis to 1¾ mile.



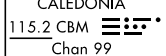
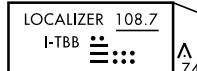
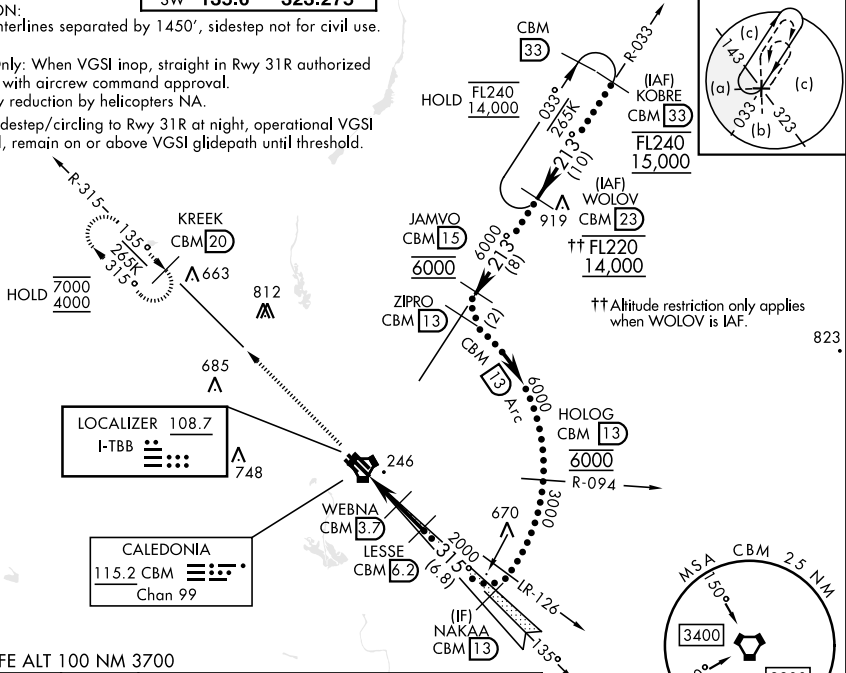
MISSED APPROACH: Climb heading 315° to intercept the VOR/TAC CBM R-315 outbound to KREEK (CBM R-315/20) and hold. Maintain 4000.

ATIS ★ 115.2 273.5	APP CON ★ N 126.075 239.25 SE 134.55 350.3 SW 135.6 323.275	TOWER ★ 126.65 379.925	GND CON ★ 121.9 275.8
------------------------------	---	----------------------------------	---------------------------------

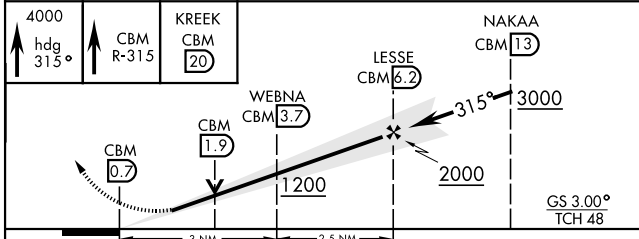
*** CAUTION:
Rwy centerlines separated by 1450', sidestep not for civil use.

USAF Only: When VGSI inop, straight in Rwy 31R authorized at night with aircrew command approval. Visibility reduction by helicopters NA.

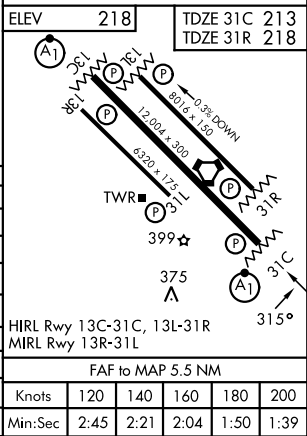
When sidestep/circling to Rwy 31R at night, operational VGSI required, remain on or above VGSI glidepath until threshold.



EMERG SAFE ALT 100 NM 3700



CATEGORY	C	D	E
S-ILS 31C*	413/24	200 (200-½)	
S-LOC 31C**	640/40	427 (500-¾)	
SIDESTEP RWY 31R***	640-1¼	422 (500-¼)	
CIRCLING	740-1½ 522 (600-½)	880-2 662 (700-2)	1240-3 1022 (1100-3)
LOCAL ALTIMETER, WITHOUT LAST STEPDOWN FIX			
S-LOC 31C †	720/55	507 (600-1)	
SIDESTEP*** RWY 31R	760-1¾	542 (600-1¾)	
CIRCLING	760-1¾ 542 (600-1¾)	880-2 662 (700-2)	1240-3 1022 (1100-3)



COLUMBUS, MISSISSIPPI
Amdt 3 19MAR26

33°39'N-88°27'W

COLUMBUS AFB (KCBM)

HI-ILS or LOC Z RWY 31C

SC-4, 14 MAY 2026 to 11 JUN 2026

SC-4, 14 MAY 2026 to 11 JUN 2026