

COLUMBUS, MISSISSIPPI

# RNAV (GPS) RWY 13C

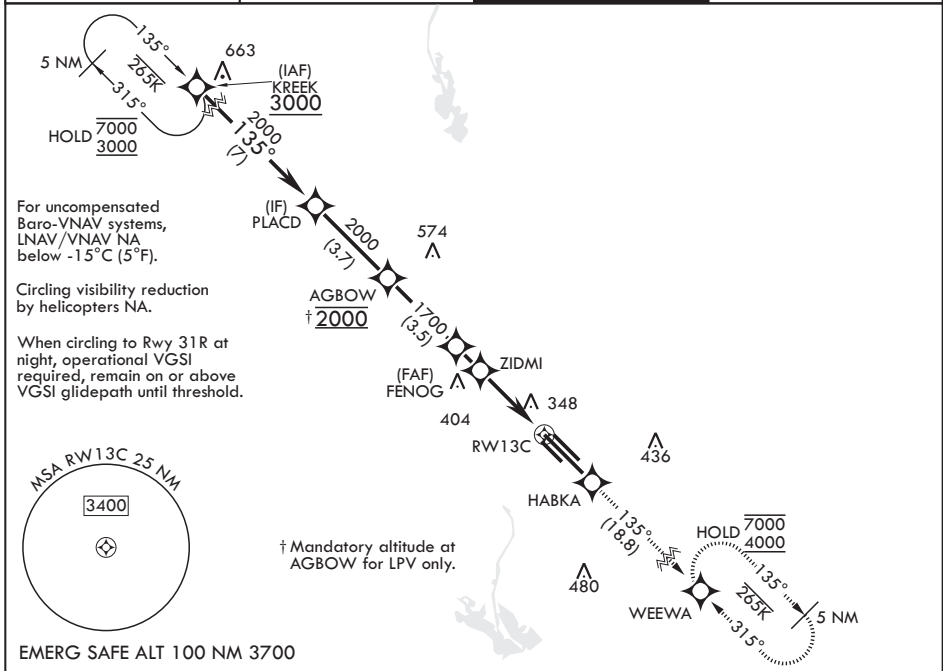
WAAS CH 53183 W13A	APCH CRS 135°	Rwy ldg 12,004	TDZE 196
		Arpt Elev 218	

(USAF)

COLUMBUS AFB (KCBM)

RNP APCH	ALSIF-1	MISSED APPROACH: Climb to 4000 direct HABKA, direct track to WEEWA and hold as published.
<p>▼ * When ALS inop increase RVR to 40, vis to 3/4 mile.                  ** When ALS inop, increase vis to 1 3/8 miles.                  *** When ALS inop, increase CAT AB RVR to 55, vis to 1 mile, CAT CDE vis to 1 3/8 miles.</p>		

ATIS★ 115.2 273.5	APP CON★ 126.075 239.25 N 134.55 350.3 SE 135.6 323.275 SW	TOWER★ 126.65 379.925	GND CON★ 121.9 275.8
----------------------	---	--------------------------	-------------------------



KREEK 3000	PLACD 2000	AGBOW †2000	FENOG 1700	ZIDMI 1260	RW13C 1.4 NM to RW13C	HABKA 4000	tr 135°	WEEWA ELEV 218	TDZE 196
GP 3.00° TCH 49									
CATEGORY	A	B	C	D	E				
LPV DA*		396/24	200	(200-1/2)					
LNAV/VNAV DA**		666/50	470	(500-1)					
LNAV MDA***	680/24	484 (500-1/2)	680/50	484 (500-1)					
CIRCLING	700-1 482 (500-1)	720-1 502 (600-1)	740-1 1/2 522 (600-1 1/2)	880-2 662 (700-2)	1240-3 1022 (1100-3)				
						MIRL Rwy 13R-31L			
						HIRL Rws 13C-31C and 13L-31R			

COLUMBUS, MISSISSIPPI

33°39'N - 88°27'W

COLUMBUS AFB (KCBM)

Amdt 4 07SEP23

# RNAV (GPS) RWY 13C

SC-4, 14 MAY 2026 to 11 JUN 2026

SC-4, 14 MAY 2026 to 11 JUN 2026