

COLUMBUS, MISSISSIPPI

RNAV (GPS) RWY 31C

WAAS CH 89580 W31A	APCH CRS 315°	Rwy ldg TDZE Arpt Elev	12,004 213 218
--------------------------	------------------	------------------------------	----------------------

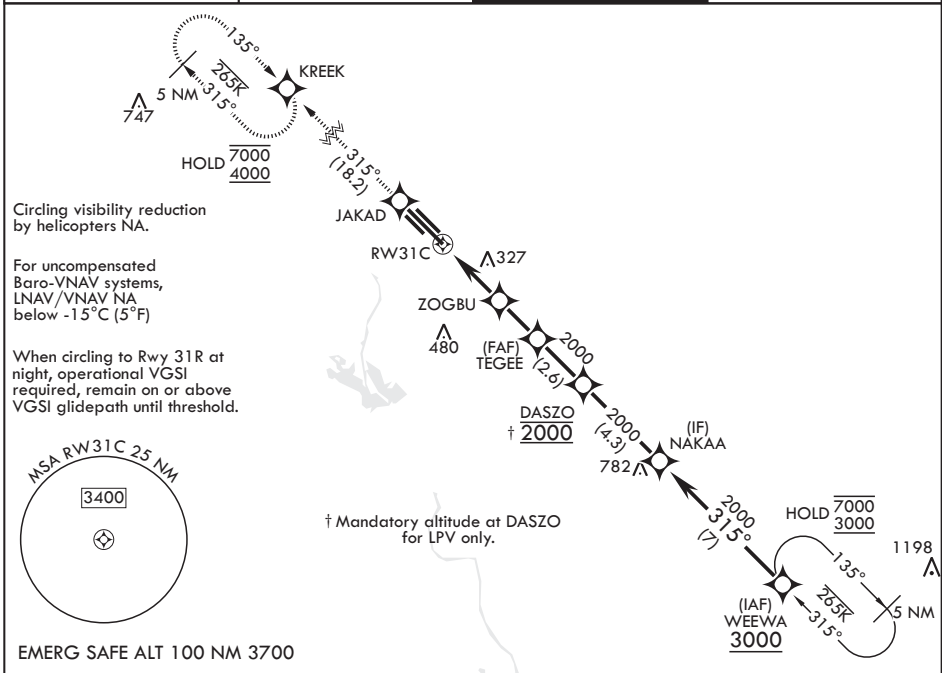
(USAF)

COLUMBUS AFB (KCBM)

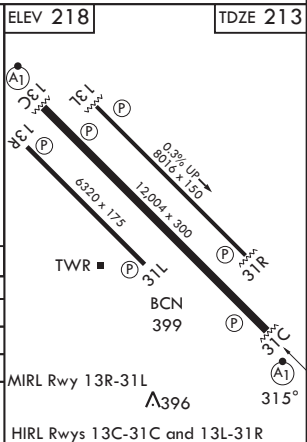
RNP APCH
 ▼ * When ALS inop increase RVR to 40, vis to 3/4 mile.
 ** When ALS inop, increase vis to 1 3/8 miles.
 *** When ALS inop, increase CAT AB RVR to 55, vis to 1 mile; CAT CDE vis to 1 3/4 miles.

ALS-1
 MISSED APPROACH: Climb to 4000 direct JAKAD, direct KREEK and hold.

ATIS* 115.2 273.5	APP CON* 126.075 239.25 N 134.55 350.3 SE 135.6 323.275 SW	TOWER* 126.65 379.925	GND CON* 121.9 275.8
----------------------	---------------------------------------------------------------------	--------------------------	-------------------------



4000	JAKAD	tr 315°	KREEK			
CATEGORY	A	B	C	D	E	
LPV DA*	413/24		200	(200-1/2)		
LNAV/VNAV DA**	671/45		458	(500-3/4)		
LNAV MDA***	840/24 627 (700-1/2)		840-1 3/8	627 (700-1)		
CIRCLING	840-1 622 (700-1)		840-1 3/4 (700-1 3/4)	880-2 (700-2)	1240-3 1022 (1100-3)	



COLUMBUS, MISSISSIPPI
Amdt 4 07SEP23

33°39'N - 88°27'W

COLUMBUS AFB (KCBM)

RNAV (GPS) RWY 31C

SC-4, 14 MAY 2026 to 11 JUN 2026

SC-4, 14 MAY 2026 to 11 JUN 2026