

COLUMBUS, MISSISSIPPI

TACAN RWY 31R

| | | |
|--|-------------------------|--|
| VORTAC CBM 115.2 Chan 99 | APCH CRS 302° | Rwy Idg TDZE 218 Arpt Elev 218 |
|--|-------------------------|--|

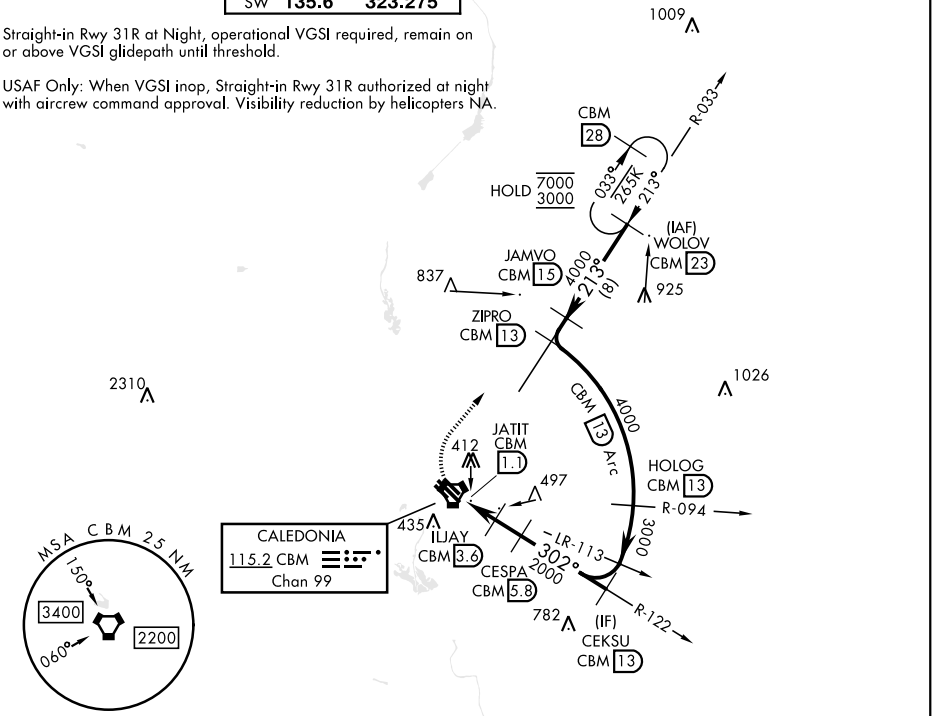
[USAF]

COLUMBUS AFB (KCBM)

| | | | |
|--|---|--|---|
| <p>Missed approach requires use of RNAV or ATC RADAR monitoring.</p> | | <p>MISSED APPROACH: Climbing right turn to WOLOV and hold as published. Maintain 3000.</p> | |
| <p>ATIS ★ 115.2 273.5</p> | <p>APP CON ★ N 126.075 239.25 SE 134.55 350.3 SW 135.6 323.275</p> | <p>TOWER ★ 126.65 379.925</p> | <p>GND CON ★ 121.9 275.8</p> |

Straight-in Rwy 31R at Night, operational VGSI required, remain on or above VGSI glidepath until threshold.

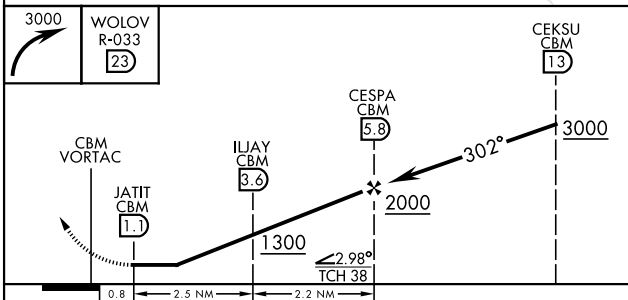
USAF Only: When VGSI inop, Straight-in Rwy 31R authorized at night with aircrew command approval. Visibility reduction by helicopters NA.



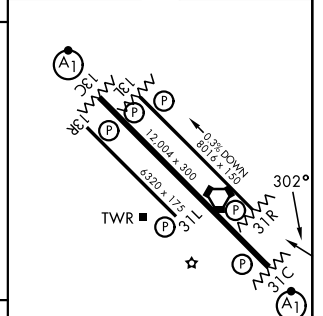
SC-4, 14 MAY 2026 to 11 JUN 2026

SC-4, 14 MAY 2026 to 11 JUN 2026

EMERG SAFE ALT 100 NM 3700



| | | | |
|------|-----|------|-----|
| ELEV | 218 | TDZE | 218 |
|------|-----|------|-----|



| CATEGORY | A | B | C | D | E |
|----------|--------------------|---|---------------------|-------------------|----------------------|
| S-31R | 760/55 542 (600-1) | | 760-1½ 542 (600-1½) | | |
| CIRCLING | 760-1 542 (600-1) | | 760-1½ 542 (600-1½) | 880-2 662 (700-2) | 1240-3 1022 (1100-3) |

MIRL Rwy 13R-31L
HIRL Rwy 13C-31C, 13L-31R

COLUMBUS, MISSISSIPPI

33° 39' N-88° 27' W

COLUMBUS AFB (KCBM)

Amdt 2 14MAY26

TACAN RWY 31R