

CLPRR THREE ARRIVAL (RNAV)
(CLPRR, CLPRR3) 26DEC24

COLUMBUS, OHIO

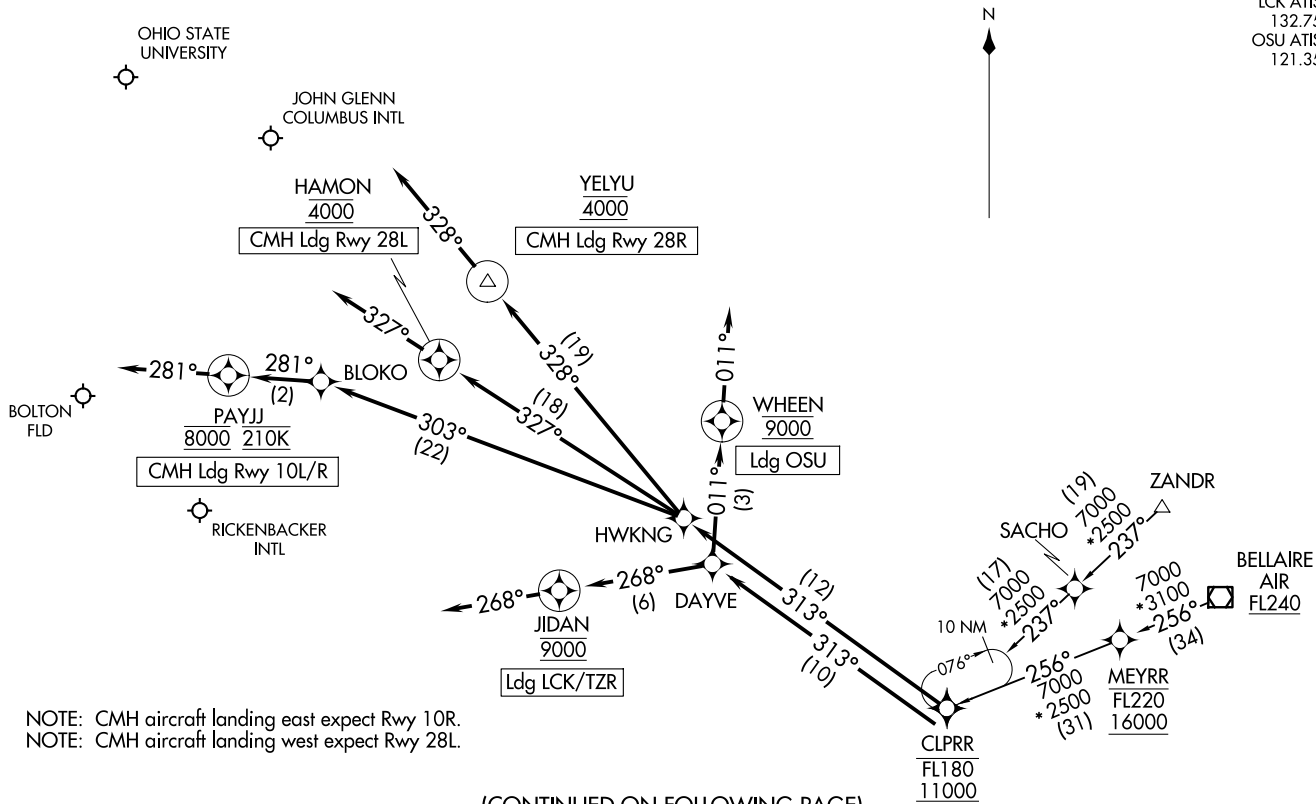
RNAV 1 - DME/DME/IRU or GPS.
RADAR required.

COLUMBUS APP CON 134.0
CMH D-ATIS 124.6
LCK ATIS 132.75
OSU ATIS 121.35

(CLPRR, CLPRR3) 25051
CLPRR THREE ARRIVAL (RNAV)

AL-94 (FAA)

COLUMBUS, OHIO



(CONTINUED ON FOLLOWING PAGE)

ARRIVAL ROUTE DESCRIPTION

BELLAIRE TRANSITION (AIR.CLPRR3)

ZANDR TRANSITION (ZANDR.CLPRR3)

CMH: From CLPRR on track 313° to HWKNG.

LANDING CMH RUNWAY 10L/R: From HWKNG on track 303° to BLOKO, then on track 281° to cross PAYJJ at 8000 and at 210K, then on track 281°. Expect RADAR vectors to final approach course.

LANDING CMH RUNWAY 28L: From HWKNG on track 327° to cross HAMON at 4000, then on track 327°. Expect RADAR vectors for ILS Rwy 28L approach.

LANDING CMH RUNWAY 28R: From HWKNG on track 328° to cross YELYU at 4000, then on track 328°. Expect RADAR vectors for ILS Rwy 28R approach.

LANDING TZR/LCK: From CLPRR on track 313° to DAYVE, then on track 268° to cross JIDAN at 9000, then on track 268°. Expect RADAR vectors to final approach course.

LANDING OSU: From CLPRR on track 313° to DAYVE, then on track 011° to cross WHEEN at 9000, then on track 011°. Expect RADAR vectors to final approach course.

EC-2, 14 MAY 2026 to 11 JUN 2026

EC-2, 14 MAY 2026 to 11 JUN 2026