

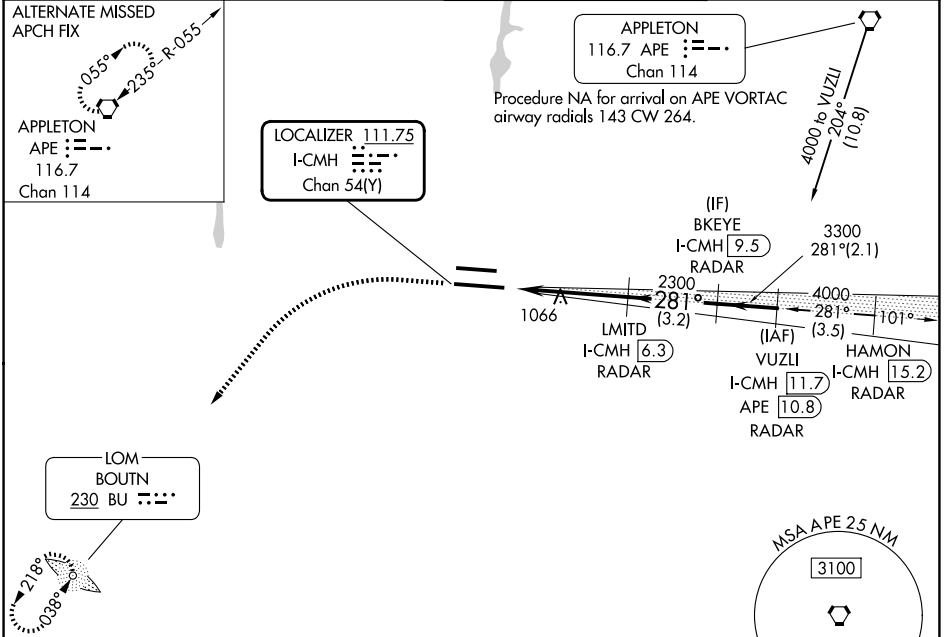
LOC/DME I-CMH 111.75 Chan 54 (Y)	APP CRS 281°	Rwy Ldg 10114 TDZE 815 Apt Elev 815
--	------------------------	--

ILS RWY 28L (SA CAT I & II)

JOHN GLENN COLUMBUS INTL (CMH)

ADF required. DME or RADAR required.	MALSR 	MISSED APPROACH: Climb to 1400 then climbing left turn to 3000 direct BU LOM and hold.
Simultaneous approach authorized. SA CAT I, SA CAT II: Requires specific OPSPEC, MSPEC, or LOA approval.		

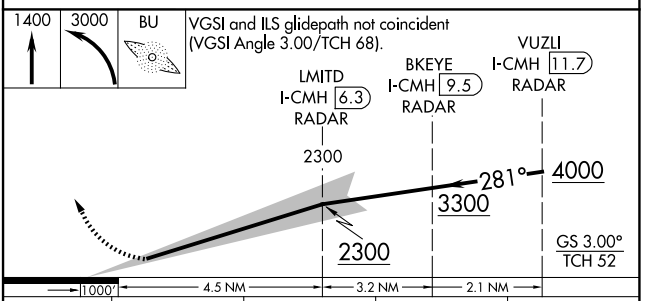
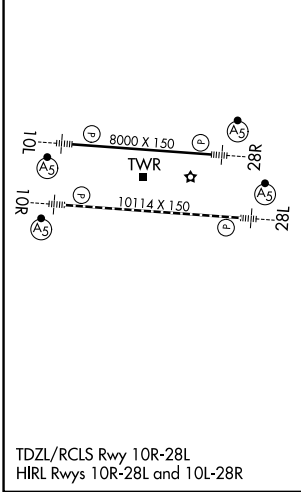
D-ATIS 124.6	COLUMBUS APP CON 125.95 371.975	COLUMBUS TOWER 132.7 257.8	GND CON 121.9 348.6
------------------------	---	--------------------------------------	-------------------------------



EC-2, 14 MAY 2026 to 11 JUN 2026

EC-2, 14 MAY 2026 to 11 JUN 2026

ELEV 815	D	TDZE 815
----------	----------	----------



CATEGORY	A	B	C	D
S-ILS 28L	SA CAT I RA 157/14 150 DA 965			
S-ILS 28L	SA CAT II RA 100/12 100 DA 915			

SA CATEGORY I & II ILS - SPECIAL AIRCREW & AIRCRAFT CERTIFICATION REQUIRED