


APP CRS	Rwy Ldg	<b>8000</b>
<b>101°</b>	TDZE	<b>815</b>
	Apt Elev	<b>815</b>

# RNAV (RNP) Z RWY 10L

JOHN GLENN COLUMBUS INTL (CMH)

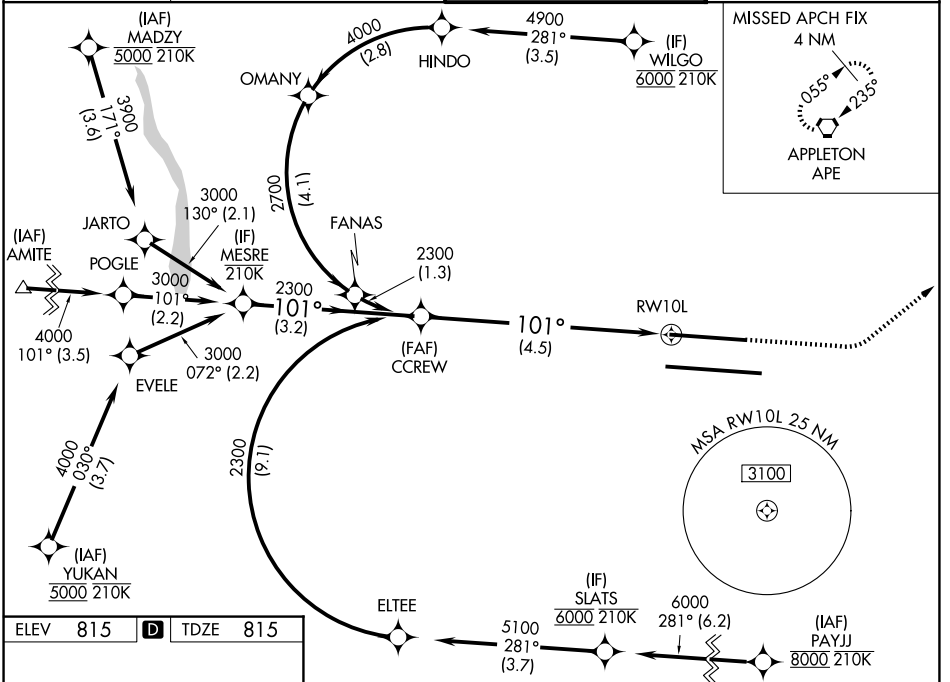
RNP APCH AR - GPS. Authorization required. From HINDO or ELTEE: RF.

Simultaneous approach authorized. For uncompensated Baro-VNAV systems, procedure NA below -1.4°C or above 54°C. For inop ALS, increase RNP 0.30 all Cats visibility to RVR 6000.

MALSR 

MISSED APPROACH: Climb to 1400 then climbing left turn to 3000 direct APE VORTAC and hold.

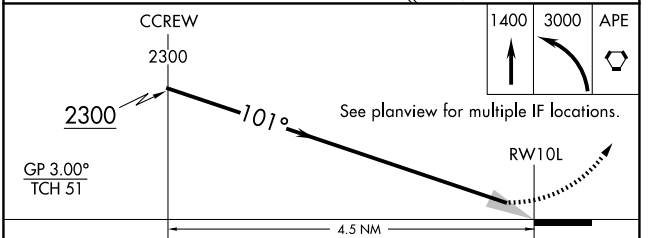
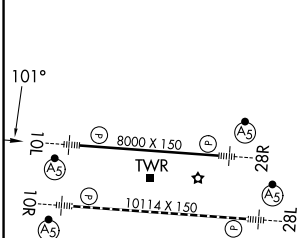
D-ATIS <b>124.6</b>	COLUMBUS APP CON <b>125.95 371.975</b>	COLUMBUS TOWER <b>132.7 257.8</b>	GND CON <b>121.9 348.6</b>
------------------------	---	--------------------------------------	-------------------------------



EC-2, 14 MAY 2026 to 11 JUN 2026

EC-2, 14 MAY 2026 to 11 JUN 2026

ELEV 815	<b>D</b>	TDZE 815
----------	----------	----------



CATEGORY	A	B	C	D
RNP 0.13 DA		1148/26	333 (400-1/2)	
RNP 0.26 DA		1198/35	383 (400-3/8)	
RNP 0.30 DA		1216/40	401 (500-3/4)	

TDZL/RCLS Rwy 10R and 28L  
HIRL Rwy 10R-28L and 10L-28R

**AUTHORIZATION REQUIRED**