

APP CRS	Rwy Ldg	10114
101°	TDZE	809
	Apt Elev	815

RNAV (RNP) Z RWY 10R

JOHN GLENN COLUMBUS INTL (CMH)

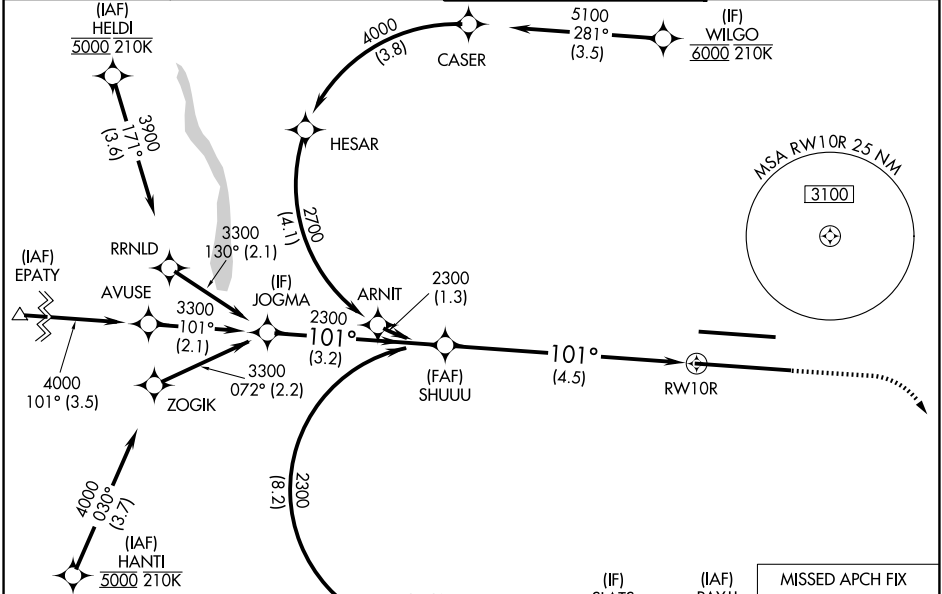
RNP AR APCH - GPS. Authorization required. From CASER or TOYON: RF.

Simultaneous approach authorized. For uncompensated Baro-VNAV systems, procedure NA below -1.4°C or above 54°C. For inop ALS, increase RNP 0.30 all Cats visibility to RVR 6000.



MISSED APPROACH: Climb to 1400 then climbing right turn to 3000 direct BOUTN LOM and hold.

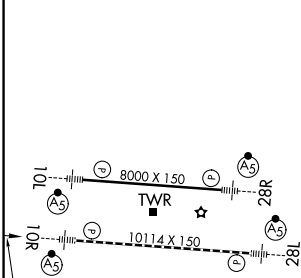
D-ATIS 124.6	COLUMBUS APP CON 125.95 371.975	COLUMBUS TOWER 132.7 257.8	GND CON 121.9 348.6
------------------------	---	--------------------------------------	-------------------------------



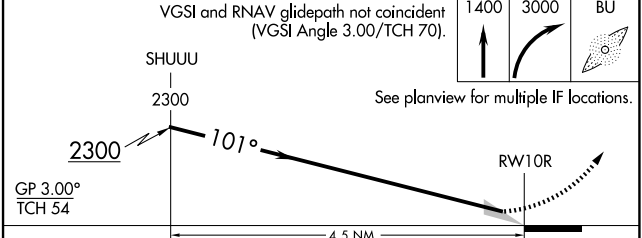
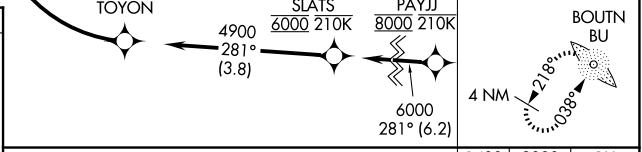
EC-2, 14 MAY 2026 to 11 JUN 2026

EC-2, 14 MAY 2026 to 11 JUN 2026

ELEV 815	D	TDZE 809
----------	----------	----------



TDZL/RCLS Rwy 10R and 28L
HIRL Rwy 10R-28L and 10L-28R



CATEGORY	A	B	C	D
RNP 0.17 DA		1138/26	329 (400-½)	
RNP 0.30 DA		1214/40	405 (400-¾)	

AUTHORIZATION REQUIRED