

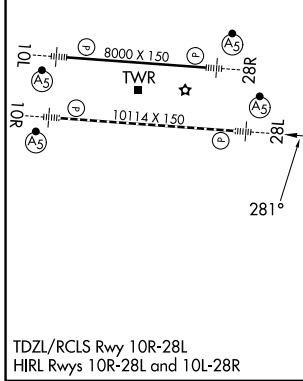
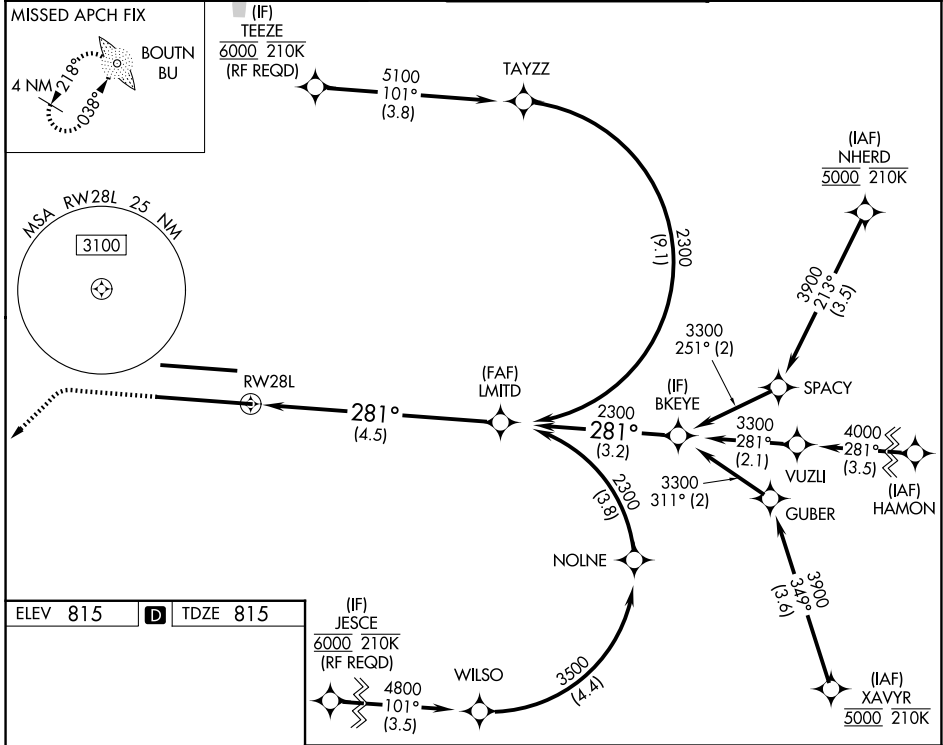
RNAV (RNP) Z RWY 28L

JOHN GLENN COLUMBUS INTL (CMH)

| | | |
|------------------------|-----------------------------|--|
| APP CRS 281° | Rwy Ldg TDZE Apt Elev | 10114 815 815 |
|------------------------|-----------------------------|--|

| | | |
|---|------------|---|
| RNP AR APCH. | MALSRS | MISSED APPROACH: Climb to 1400 then climbing left turn to 3000 direct BOUTN LOM and hold. |
| For uncompensated Baro-VNAV systems, procedure NA below -19°C or above 54°C. For inop ALS, increase RNP 0.30 all Cats visibility to 1 3/8 SM. Simultaneous approach authorized. | | |

| | | | |
|------------------------|---|--------------------------------------|-------------------------------|
| D-ATIS 124.6 | COLUMBUS APP CON 125.95 371.975 | COLUMBUS TOWER 132.7 257.8 | GND CON 121.9 348.6 |
|------------------------|---|--------------------------------------|-------------------------------|

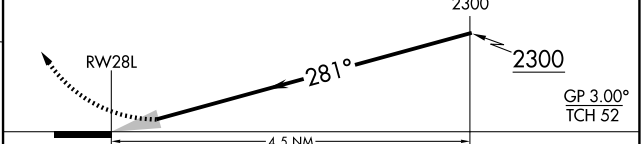


(IF) JESCE 6000 210K (RF REQD)

1400 3000 BU

VGSI and RNAV glidepath not coincident (VGSI Angle 3.00/ TCH 68).

LMITD See planview for multiple IF locations.



| | | | | |
|-------------|---|---------|---------------|---|
| CATEGORY | A | B | C | D |
| RNP 0.17 DA | | 1147/26 | 332 (400-1/2) | |
| RNP 0.30 DA | | 1314/50 | 499 (500-1) | |

AUTHORIZATION REQUIRED

EC-2, 14 MAY 2026 to 11 JUN 2026

EC-2, 14 MAY 2026 to 11 JUN 2026