


RNAV (RNP) Z RWY 28R

JOHN GLENN COLUMBUS INTL (CMH)

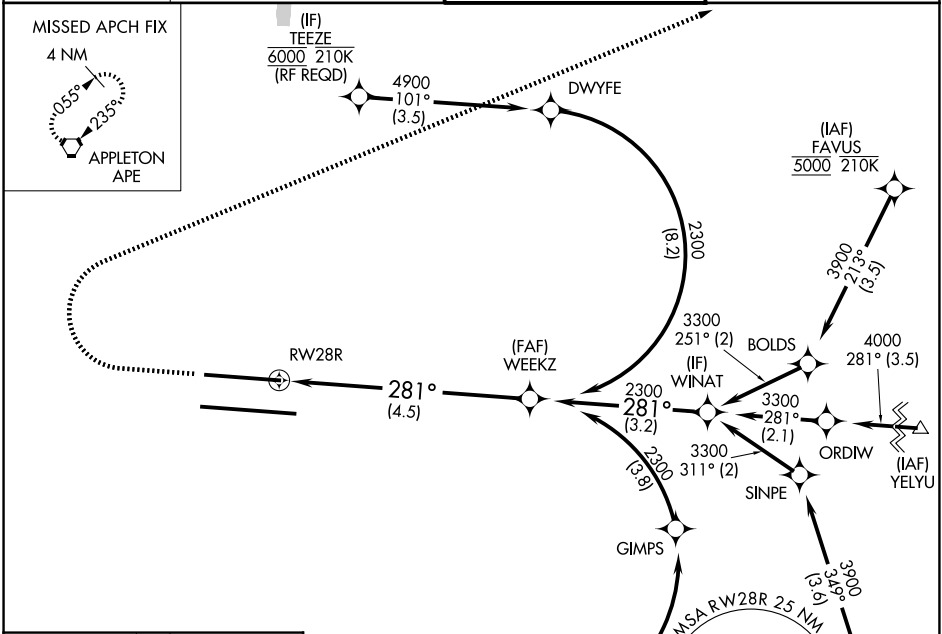
APP CRS	Rwy Ldg	8000
281°	TDZE	813
	Apt Elev	815

RNP AR APCH. MALSR 

For uncompensated Baro-VNAV systems, procedure NA below -19°C or above 54°C. For inop ALS, increase RNP 0.16 all Cats visibility to RVR 4500 and increase RNP 0.30 all Cats visibility to RVR 5500. Simultaneous approach authorized.

MISSED APPROACH: Climb to 1400 then climbing right turn to 3000 to APE VORTAC and hold.

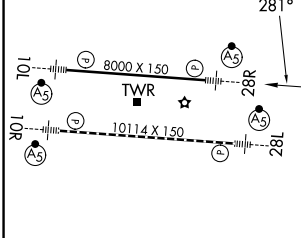
D-ATIS 124.6	COLUMBUS APP CON 125.95 371.975	COLUMBUS TOWER 132.7 257.8	GND CON 121.9 348.6
------------------------	---	--------------------------------------	-------------------------------



EC-2, 14 MAY 2026 to 11 JUN 2026

EC-2, 14 MAY 2026 to 11 JUN 2026

ELEV	815	D	TDZE	813
------	-----	----------	------	-----



5100 101° (3.2)	(IF) JESCE 6000 210K (RF REQD)	5100 101° (3.2)	HUSOR	3100	MSA RWY 28R 2.5 NM
-----------------------	--------------------------------------	-----------------------	-------	------	--------------------

1400	3000	APE	See planview for multiple IF locations.
		WEEKZ	2300
			GP 3.00° TCH 50

CATEGORY	A	B	C	D
RNP 0.16 DA	1129/24	316 (400-½)		
RNP 0.30 DA	1185/35	372 (400-¾)		

TDZL/RCLS Rwy 10R-28L
HIRL Rwy 10R-28L and 10L-28R

AUTHORIZATION REQUIRED