

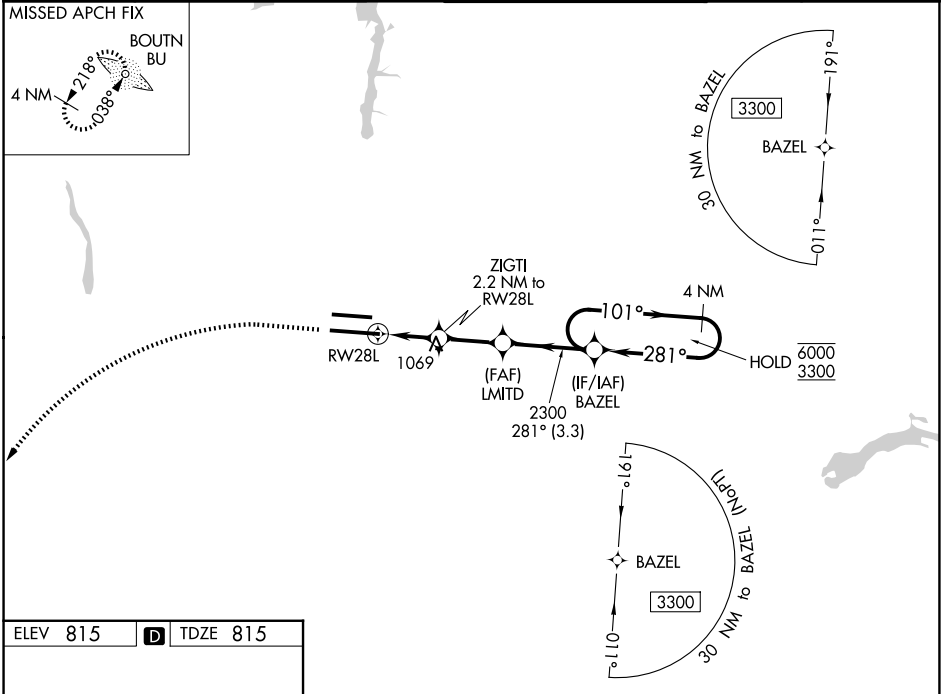
WAAS CH 48999 W28A	APP CRS 281°	Rwy Ldg TDZE Apt Elev	10114 815 815
--	------------------------	-----------------------------	--

RNAV (GPS) Y RWY 28L

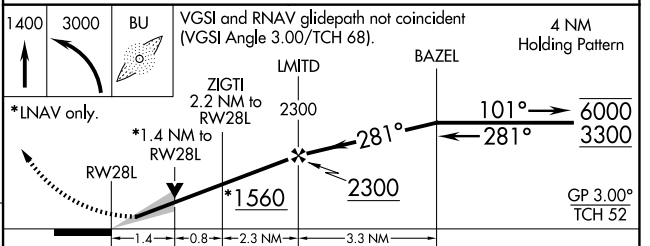
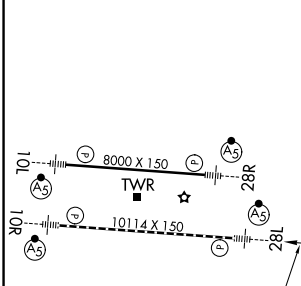
JOHN GLENN COLUMBUS INTL (CMH)

RNP APCH	<p>Simultaneous approach authorized. For uncompensated Baro-VNAV systems, LNAV/VNAV NA below -19°C or above 54°C. LNAV procedure NA during simultaneous operations. Use of FD or AP providing RNAV track guidance required during simultaneous operations. For inop ALS, increase LNAV Cat C/D visibility to 1½ SM.</p>	MALSR	<p>MISSED APPROACH: Climb to 1400 then climbing left turn to 3000 direct BOUTN LOM and hold.</p>
----------	---	-------	--

D-ATIS 124.6	COLUMBUS APP CON 125.95 371.975	COLUMBUS TOWER 132.7 257.8	GND CON 121.9 348.6
------------------------	---	--------------------------------------	-------------------------------



ELEV 815	D	TDZE 815
----------	----------	----------



CATEGORY	A	B	C	D
LPV DA		1015/18	200 (200-½)	
LNAV/VNAV DA		1237/40	422 (500-¾)	
LNAV MDA	1320/24	505 (600-½)	1320/55	505 (600-1)
CIRCLING	1340-1	525 (600-1)	1520-2 705 (800-2)	1520-2¼ 705 (800-2¼)

EC-2, 14 MAY 2026 to 11 JUN 2026

EC-2, 14 MAY 2026 to 11 JUN 2026