

APP CRS	Rwy Ldg	<b>5364</b>
<b>171°</b>	TDZE	<b>339</b>
	Apt Elev	<b>342</b>

# RNAV (GPS) RWY 17

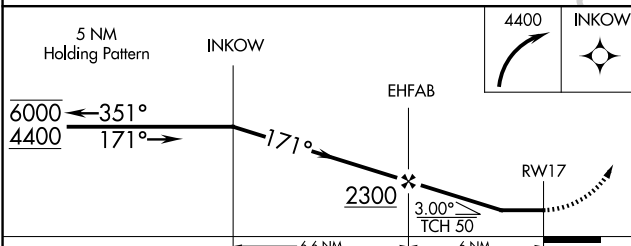
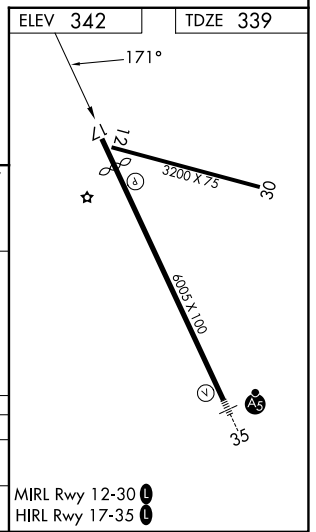
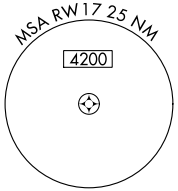
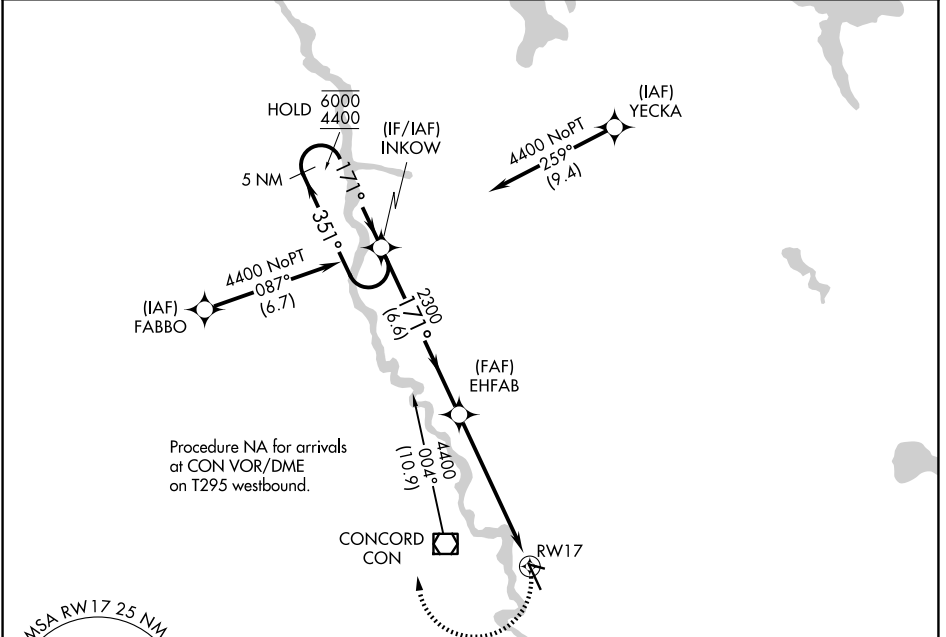
CONCORD MUNI (CON)

RNP APCH - GPS.

**▼** Straight-in Rwy 17 NA at night, Circling Rwys 12, 17, 30 NA at night.  
**▲** Rwy 17 helicopter visibility reduction below 1 SM NA.

MISSED APPROACH: Climbing right turn to 4400 direct INKOW and hold, continue climb-in-hold to 4400.

ASOS <b>132.325</b>	BOSTON APP CON <b>127.35 269.075</b>	UNICOM <b>122.7 (CTAF) 0</b>
------------------------	---	---------------------------------



CATEGORY	A	B	C	D
LNAV MDA	1000-1	661 (700-1)	1000-1 $\frac{7}{8}$	661 (700-1 $\frac{7}{8}$ )
CIRCLING	1000-1 658 (700-1)	1080-1 738 (800-1)	1500-3	1158 (1200-3)

MIRL Rwy 12-30 0  
HIRL Rwy 17-35 0

NE-1, 14 MAY 2026 to 11 JUN 2026

NE-1, 14 MAY 2026 to 11 JUN 2026