

# HI-TACAN W RWY 31L

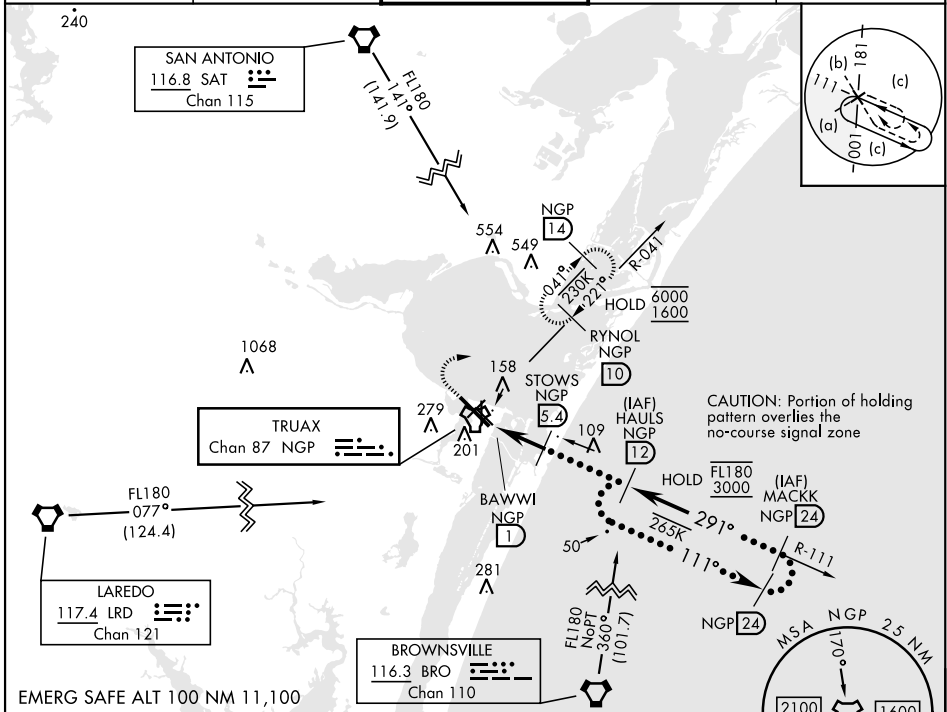
TACAN NGP Chan <b>87</b>	APCH CRS <b>291°</b>	Rwy Idg TDZE Arpt Elev	<b>8001</b> <b>17</b> <b>18</b>
-----------------------------	-------------------------	------------------------------	---------------------------------------

[USN]

CORPUS CHRISTI NAS (TRUAX FLD) (KNGP)

When local altimeter setting not received, use Corpus Christi (CRP) Intl altimeter setting. MISSED APPROACH: Climb to 1600 direct NGP TACAN and turn right to intercept R-041 to RYNOL and hold.

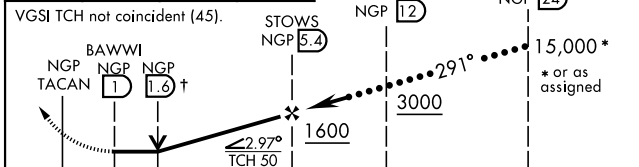
ATIS ★ <b>127.9 290.9</b>	APP CON <b>120.9 259.3</b>	NAVY CORPUS TOWER ★ <b>134.85 340.2</b>	GND CON <b>118.7 257.85</b>	ASR/PAR
------------------------------	-------------------------------	--	--------------------------------	---------



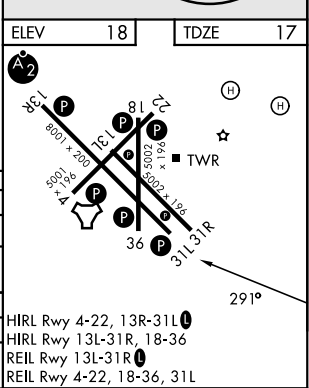
SC-3, 14 MAY 2026 to 11 JUN 2026

SC-3, 14 MAY 2026 to 11 JUN 2026

1600	NGP	RYNOL R-041	↑VDP not authorized when using Corpus Christi (CRP) Intl altimeter setting.
------	-----	-------------	---



VGSI TCH not coincident (45).	STOWS NGP 5.4	HAULS NGP 12	MACKK NGP 24
BAWWI NGP TACAN 1	NGP 1.6 †		
CORPUS CHRISTI (CRP) INTL ALTIMETER SETTING			
S-31L	460-1 3/8	443	(500-1 3/8)
CIRCLING	540-1 1/2	620-2	620-2 1/4
S-31L	522 (600-1 1/2)	602 (700-2)	602 (700-2 1/4)



CORPUS CHRISTI, TEXAS 27°42'N-97°17'W CORPUS CHRISTI NAS (TRUAX FLD) (KNGP)

Orig 30NOV23

# HI-TACAN W RWY 31L