

HI-TACAN X RWY 13R

TACAN NGP Chan 87	APCH CRS 147°	Rwy Idg TDZE Arpt Elev	8001 13 18
-----------------------------	-------------------------	------------------------------	---------------------------------------

[USN]

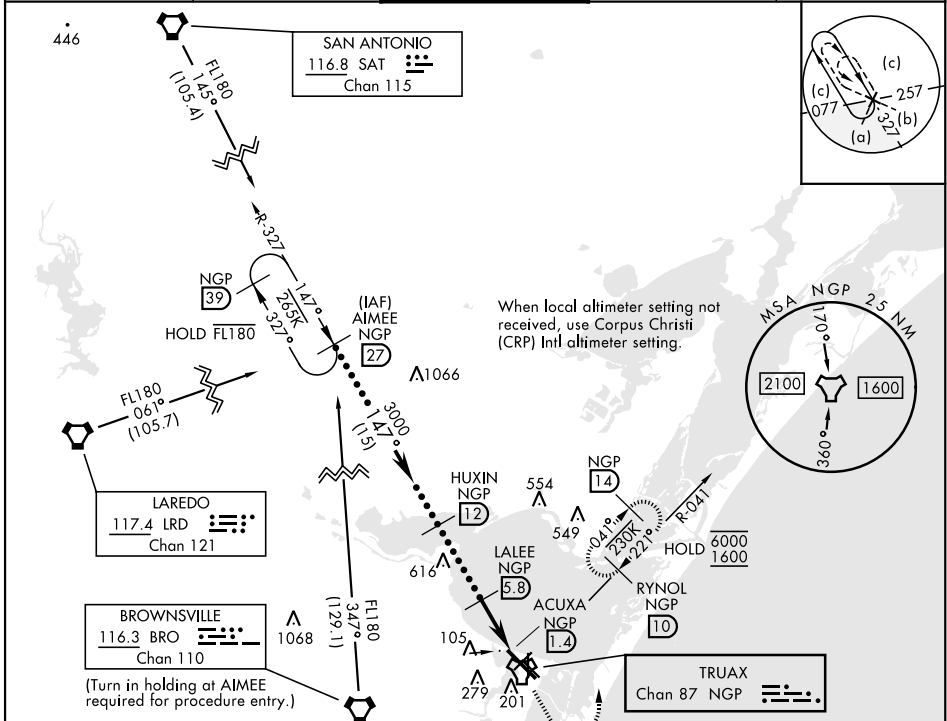
CORPUS CHRISTI NAS (TRUAX FLD) (KNGP)

V * When ALS inop, increase vis to 1½ miles.

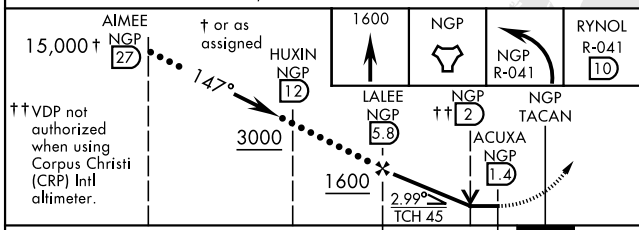
SALSF 

MISSED APPROACH: Climb to 1600 direct NGP TACAN and turn left to intercept R-041 to RYNOL and hold.

ATIS★ 127.9 290.9	APP CON 120.9 259.3	NAVY CORPUS TOWER★ 134.85 340.2	GND CON 118.7 257.85	ASR/PAR
-----------------------------	-------------------------------	---	--------------------------------	---------

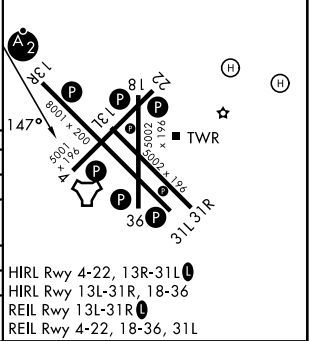


EMERG SAFE ALT 100 NM 11,100



ELEV	18	TDZE	13
------	----	------	----

CATEGORY	C	D	E
S-13R*	400-7/8	387	(400-7/8)
CIRCLING	520-1½ 502 (600-1½)	580-2	562 (600-2)
CORPUS CHRISTI (CRP) INTL ALTIMETER SETTING			
S-13R*	420-1	407	(500-1)
CIRCLING	540-1½ 522 (600-1½)	620-2 602 (700-2)	620-2¼ 602 (700-2¼)



HI-TACAN X RWY 13R

SC-3, 14 MAY 2026 to 11 JUN 2026

SC-3, 14 MAY 2026 to 11 JUN 2026