

CORPUS CHRISTI, TEXAS

ILS Y or RNAV (GPS) RWY 13R

LOC/DME I-NGP 111.3 Chan 50	APCH CRS 132°	Rwy ldg TDZE Arpt Elev 8001 13 18
---	-------------------------	---

[USN]

CORPUS CHRISTI NAS (TRUAX FLD) (KNGP)

RNP APCH for LNAV.
RNAV1 - GPS for ILS.

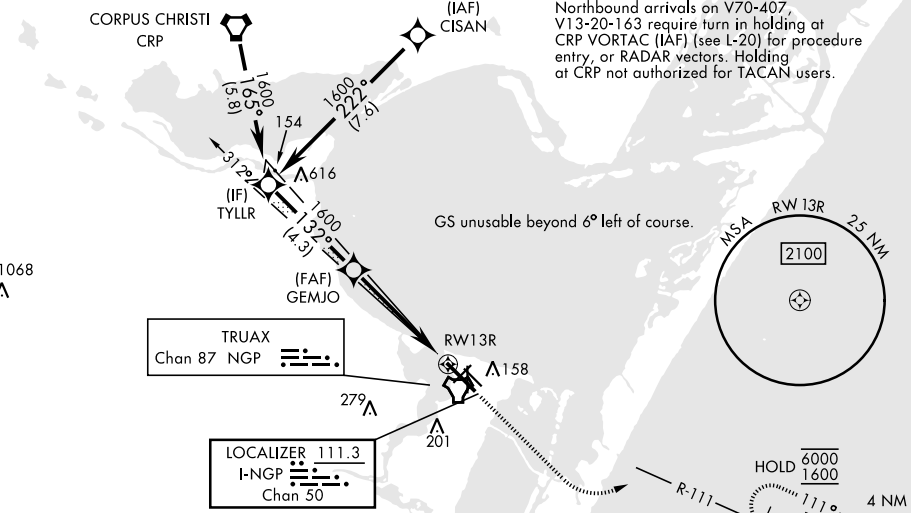
▼ *When ALS inop, increase CAT AB vis to 1 mile; CAT CD vis to 1½ miles.



MISSED APPROACH: Climb to 600, then climbing left turn to 1600 direct HAULS and hold.

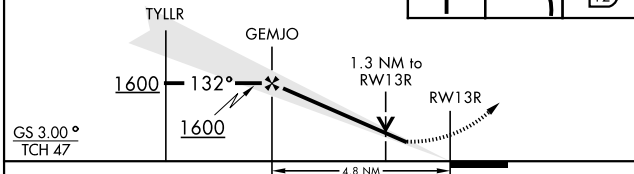
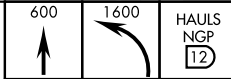
ATIS ★ 127.9 290.9	APP CON 120.9 259.3	NAVY CORPUS TOWER ★ 134.85 340.2	GND CON 118.7 257.85	ASR/PAR
------------------------------	-------------------------------	--	--------------------------------	---------

When local altimeter setting not received, use Corpus Christi (CRP) Intl altimeter setting.



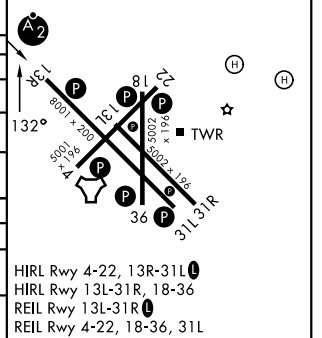
EMERG SAFE ALT 100 NM 11,100

VDP not authorized when using Corpus Christi (CRP) Intl altimeter setting



CATEGORY	A	B	C	D
S-ILS 13R	213-¾	200	(200-¾)	
LNAV MDA*	460-¾ 447 (500-¾)	460-1 447 (500-1)		
CIRCLING	460-1 442 (500-1)	480-1 462 (500-1)	520-1½ 502 (600-1½)	580-2 562 (600-2)
CORPUS CHRISTI (CRP) INTL ALTIMETER SETTING				
S-ILS 13R	246-¾	233	(300-¾)	
LNAV MDA*	500-¾ 487 (500-¾)	500-1½ 487 (500-1½)		
CIRCLING	500-1 482 (500-1)	540-1½ 522 (600-1½)	620-2 602 (700-2)	

ELEV	18	TDZE	13
------	----	------	----



CORPUS CHRISTI, TEXAS
Orig 30NOV23

27°42'N-97°17'W

CORPUS CHRISTI NAS (TRUAX FLD) (KNGP)

ILS Y or RNAV (GPS) RWY 13R

SC-3, 14 MAY 2026 to 11 JUN 2026

SC-3, 14 MAY 2026 to 11 JUN 2026