

CORPUS CHRISTI, TEXAS

RNAV (GPS) RWY 31L

[USN]

CORPUS CHRISTI NAS (TRUAX FLD) (KNGP)

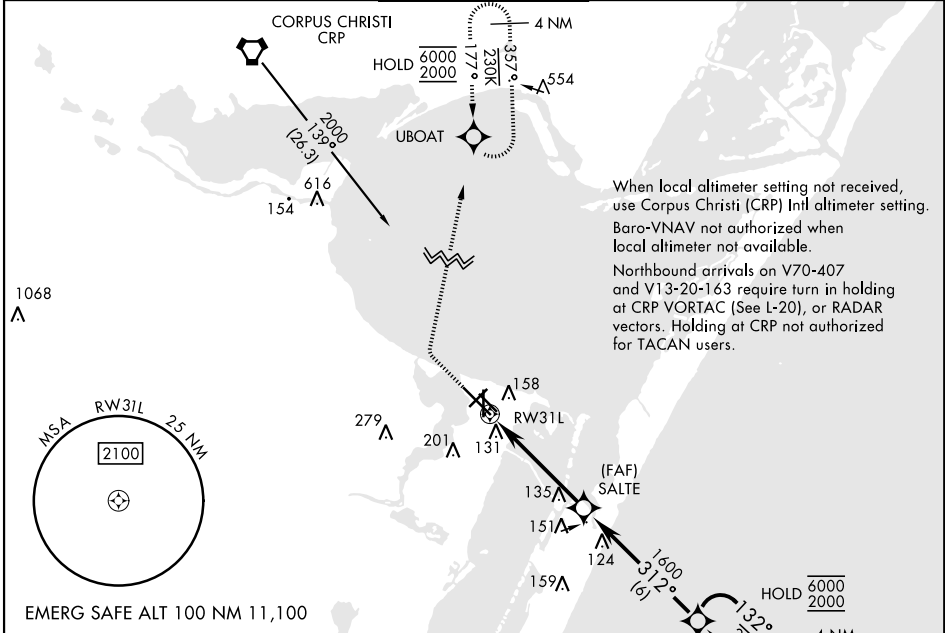
APCH CRS	Rwy Idg	8001
312°	TDZE	17
	Arprt Elev	18

RNP APCH

▼ For uncompensated Baro-VNAV systems, LNAV/VNAV NA below -15° C (5° F) or above 54° C (129° F).

MISSED APPROACH: Climb to 600, then climbing right turn to 2000 direct UBOAT and hold.

ATIS ★	APP CON	NAVY CORPUS TOWER ★	GND CON	ASR/PAR
127.9 290.9	120.9 259.3	134.85 340.2	118.7 257.85	

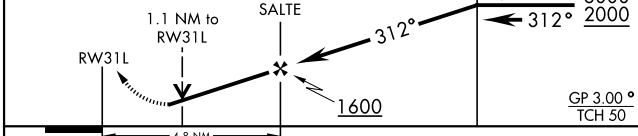


When local altimeter setting not received, use Corpus Christi (CRP) Intl altimeter setting. Baro-VNAV not authorized when local altimeter not available.

Northbound arrivals on V70-407 and V13-20-163 require turn in holding at CRP VORTAC (See L-20), or RADAR vectors. Holding at CRP not authorized for TACAN users.

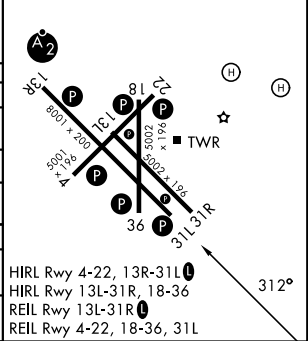
600	2000	UBOAT	VDP not authorized when using Corpus Christi (CRP) Intl altimeter setting
-----	------	-------	---

VGSI TCH not coincident (45). POLCK 4 NM Holding Pattern



CATEGORY	A	B	C	D
LNAV/VNAV DA	412-1½		395	(400-1½)
LNAV MDA	420-1	403 (500-1)	420-1½	403 (500-1½)
CIRCLING	460-1 442 (500-1)	480-1 462 (500-1)	520-1½ 502 (600-½)	580-2 562 (600-2)
CORPUS CHRISTI (CRP) INTL ALTIMETER SETTING				
LNAV MDA	460-1	443 (500-1)	460-1½	443 (500-1½)
CIRCLING	500-1	482 (500-1)	540-1½ 522 (600-½)	620-2 602 (700-2)

ELEV	18	TDZE	17
------	----	------	----



CORPUS CHRISTI, TEXAS
Amdt 2 30NOV23

27°42'N-97°17'W

CORPUS CHRISTI NAS (TRUAX FLD) (KNGP)

RNAV (GPS) RWY 31L

SC-3, 14 MAY 2026 to 11 JUN 2026

SC-3, 14 MAY 2026 to 11 JUN 2026