

CORPUS CHRISTI, TEXAS

RNAV (GPS) RWY 31R

| | | |
|----------|------------|------|
| APCH CRS | Rwy Idg | 5002 |
| 312° | TDZE | 18 |
| | Arprt Elev | 18 |

[USN]

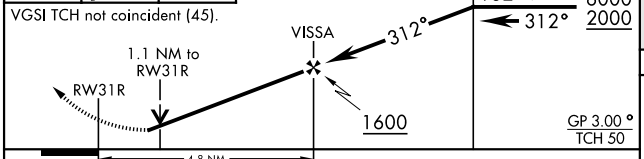
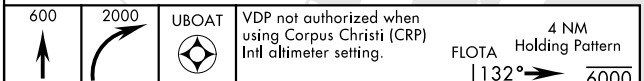
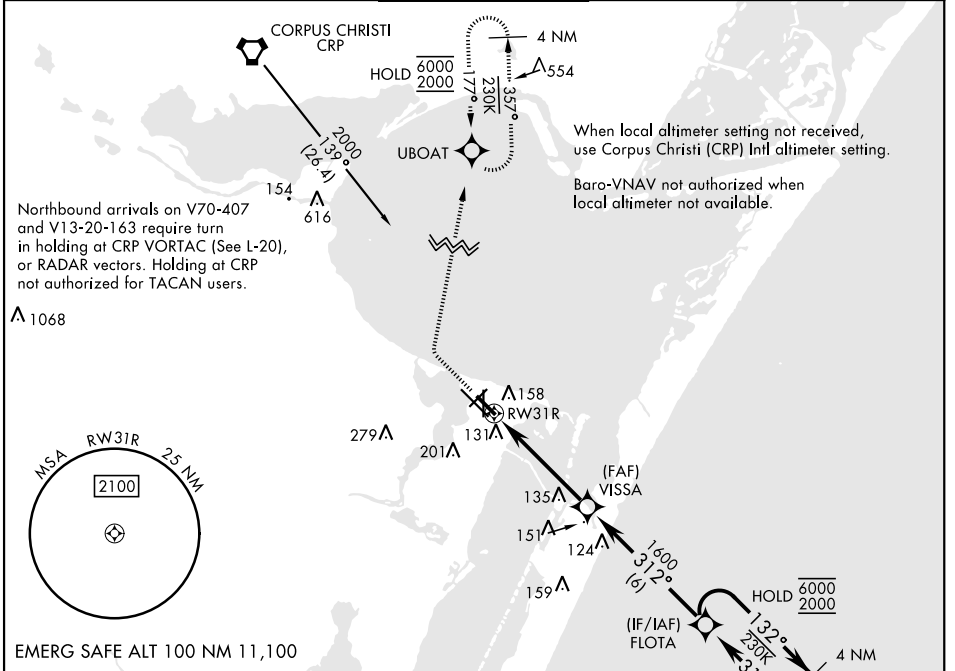
CORPUS CHRISTI NAS (TRUAX FLD) (KNGP)

RNP APCH

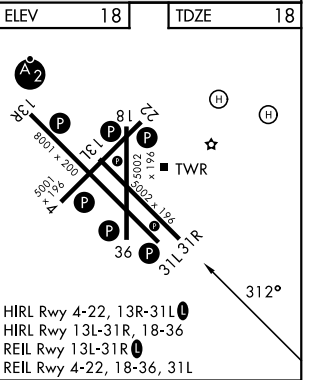
▼ For uncompensated Baro-VNAV systems, LNAV/VNAV NA below -15° C (5° F) or above 54° C (129° F).

MISSED APPROACH: Climb to 600, then climbing right turn to 2000 direct UBOAT and hold.

| | | | | |
|-------------|-------------|---------------------|--------------|---------|
| ATIS ★ | APP CON | NAVY CORPUS TOWER ★ | GND CON | ASR/PAR |
| 127.9 290.9 | 120.9 259.3 | 134.85 340.2 | 118.7 257.85 | |



| CATEGORY | A | B | C | D |
|---|-------------|-------------|--------------|--------------|
| LNAV/VNAV DA | 411-1½ | | 393 | (400-1½) |
| LNAV MDA | 420-1 | 402 (500-1) | 420-1½ | 402 (500-1½) |
| CIRCLING | 460-1 | 480-1 | 520-1½ | 580-2 |
| | 442 (500-1) | 462 (500-1) | 502 (600-1½) | 562 (600-2) |
| CORPUS CHRISTI (CRP) INTL ALTIMETER SETTING | | | | |
| LNAV MDA | 460-1 | 442 (500-1) | 460-1½ | 442 (500-1½) |
| CIRCLING | 500-1 | 482 (500-1) | 540-1½ | 620-2 |
| | | | 522 (600-1½) | 602 (700-2) |



CORPUS CHRISTI, TEXAS
Amdt 2 25JAN24

27°42'N-97°17'W

CORPUS CHRISTI NAS (TRUAX FLD) (KNGP)

RNAV (GPS) RWY 31R

SC-3, 14 MAY 2026 to 11 JUN 2026

SC-3, 14 MAY 2026 to 11 JUN 2026