

CORPUS CHRISTI, TEXAS

TACAN RWY 18

TACAN NGP Chan 87	APCH CRS 192°	Rwy Idg TDZE Arpt Elev 5002 18 18
-----------------------------	-------------------------	---

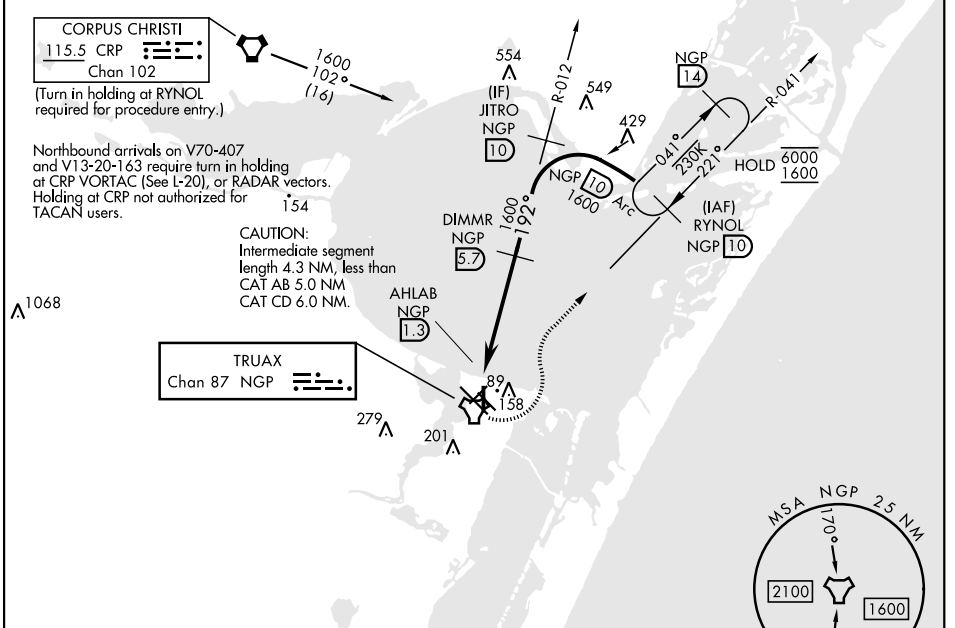
[USN]

CORPUS CHRISTI NAS (TRUAX FLD) (KNGP)

When local altimeter setting not received, use Corpus Christi (CRP) Intl altimeter setting.

MISSED APPROACH: Climb to 1600 direct NGP TACAN and turn left to intercept R-041 to RYNOL and hold.

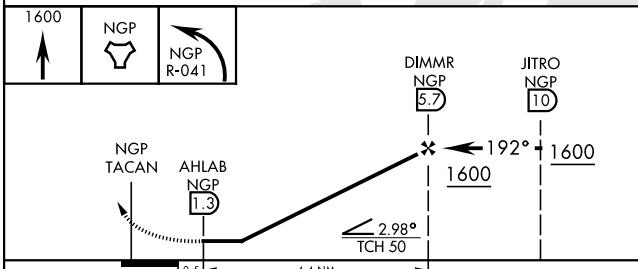
ATIS ★ 127.9 290.9	APP CON 120.9 259.3	NAVY CORPUS TOWER ★ 134.85 340.2	GND CON 118.7 257.85	ASR/PAR
------------------------------	-------------------------------	--	--------------------------------	---------



SC-3, 14 MAY 2026 to 11 JUN 2026

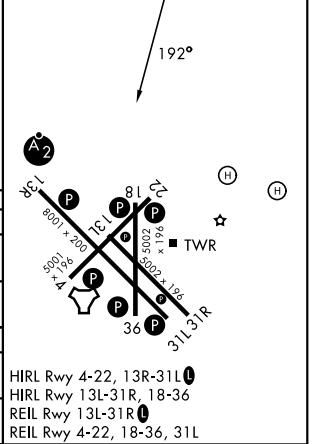
SC-3, 14 MAY 2026 to 11 JUN 2026

EMERG SAFE ALT 100 NM 11,100



CATEGORY	A	B	C	D
S-18		340-1	322	(400-1)
CIRCLING	460-1 442 (500-1)	480-1 462 (500-1)	520-1½ 502 (600-1½)	580-2 562 (600-2)
CORPUS CHRISTI (CRP) INTL ALTIMETER SETTING				
S-18		380-1	362	(400-1)
CIRCLING	500-1	482 (500-1)	540-1½ 522 (600-1½)	620-2 602 (700-2)

ELEV	18	TDZE	18
------	----	------	----



CORPUS CHRISTI, TEXAS
Amdt 2 30NOV23

27°42'N-97°17'W

CORPUS CHRISTI NAS (TRUAX FLD) (KNGP)

TACAN RWY 18