

CORPUS CHRISTI, TEXAS

TACAN RWY 36

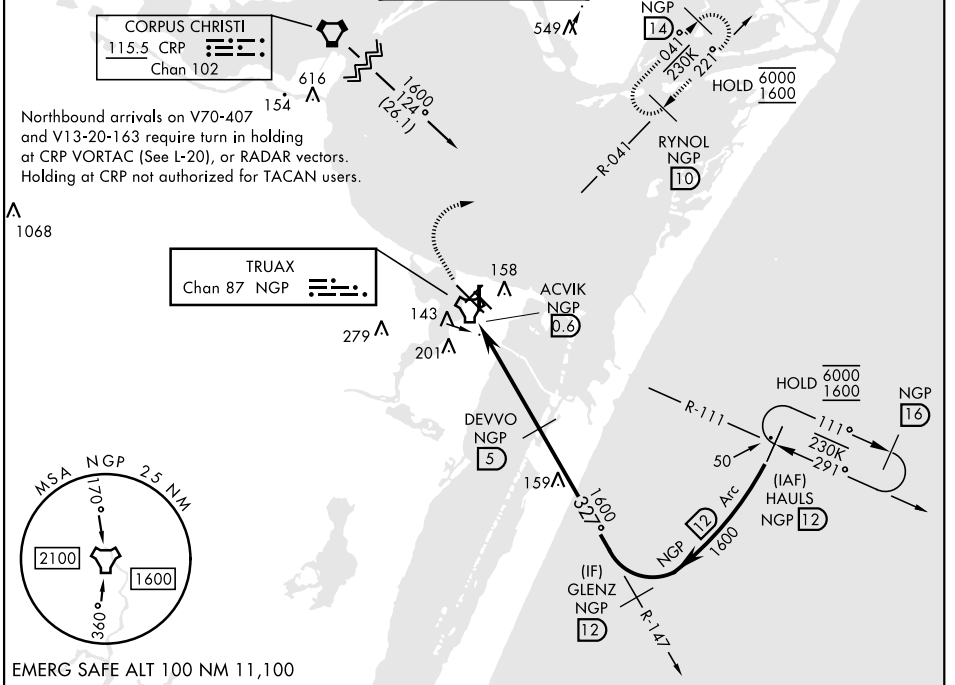
TACAN NGP Chan 87	APCH CRS 327°	Rwy Ldg TDZE Arprt Elev	5002 18 18
-----------------------------	-------------------------	-------------------------------	---------------------------------------

[USN]

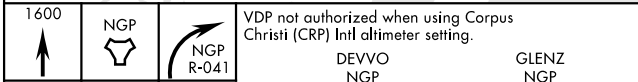
CORPUS CHRISTI NAS (TRUAX FLD) (KNGP)

T When local altimeter setting not received, use Corpus Christi (CRP) Intl altimeter setting. MISSED APPROACH: Climb to 1600 direct NGP TACAN and turn right to intercept R-041 to RYNOL and hold.

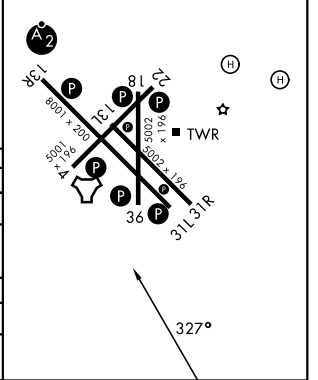
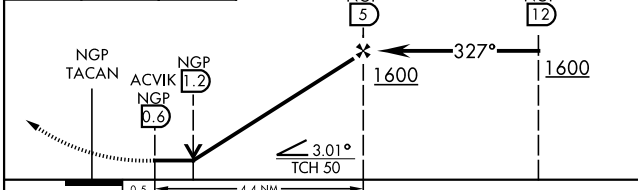
ATIS★ 127.9 290.9	APP CON 120.9 259.3	NAVY CORPUS TOWER★ 134.85 340.2	GND CON 118.7 257.85	ASR/PAR
-----------------------------	-------------------------------	---	--------------------------------	---------



EMERG SAFE ALT 100 NM 11,100



ELEV	18	TDZE	18
HIRL Rwy 4-22, 13R-31L			
HIRL Rwy 13L-31R, 18-36			
REIL Rwy 13L-31R			
REIL Rwy 4-22, 18-36, 31L			



CATEGORY	A		B		C		D	
S-36	400-1	382 (400-1)	400-1	382 (400-1)	400-1	382 (400-1)	400-1	382 (400-1)
CIRCLING	460-1	480-1	520-1	580-2	520-1	580-2	520-1	580-2
	442 (500-1)	462 (500-1)	502 (600-1)	562 (600-2)	502 (600-1)	562 (600-2)	502 (600-1)	562 (600-2)
CORPUS CHRISTI (CRP) INTL ALTIMETER SETTING								
S-36	440-1	422 (500-1)	440-1	422 (500-1)	440-1	422 (500-1)	440-1	422 (500-1)
CIRCLING	500-1	482 (500-1)	540-1	620-2	540-1	620-2	540-1	620-2
	500-1	482 (500-1)	522 (600-1)	602 (700-2)	522 (600-1)	602 (700-2)	522 (600-1)	602 (700-2)

CORPUS CHRISTI, TEXAS

27° 42' N-97° 17' W

CORPUS CHRISTI NAS (TRUAX FLD) (KNGP)

Amdt 2 30NOV23

TACAN RWY 36

SC-3, 14 MAY 2026 to 11 JUN 2026

SC-3, 14 MAY 2026 to 11 JUN 2026