

TACAN Z RWY 13R

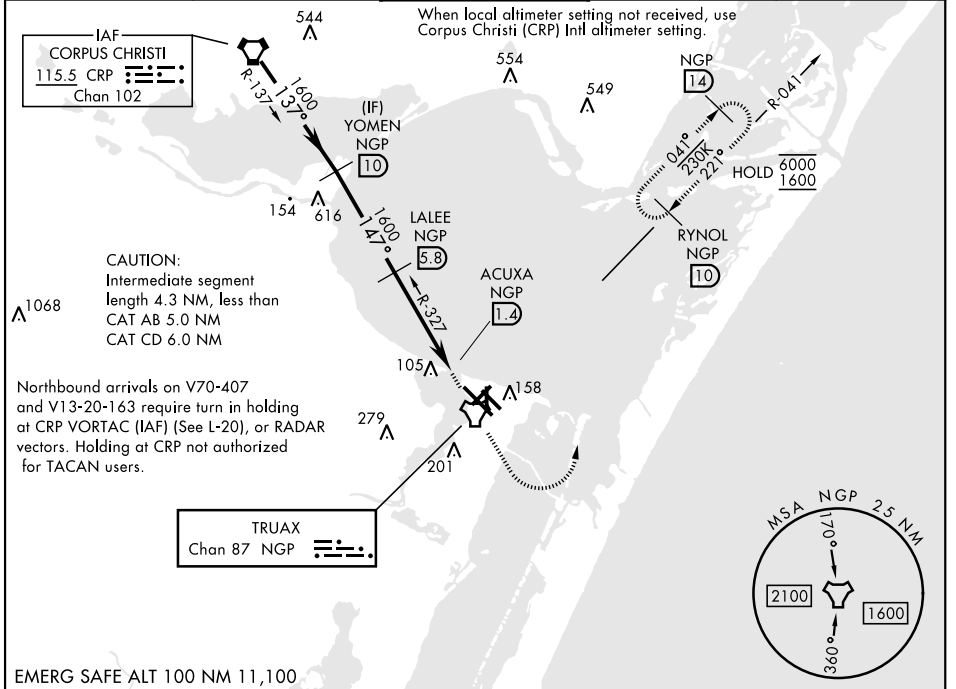
TACAN NGP Chan 87	APCH CRS 147°	Rwy ldg TDZE Arpt Elev	8001 13 18
-----------------------------	-------------------------	------------------------------	---------------------------------------

[USN]

CORPUS CHRISTI NAS (TRUAX FLD) (KNGP)

<p>▼ * When ALS inop, increase CAT AB vis to 1 mile, CAT CD vis to 1½ miles.</p>	<p>SALSF</p>	<p>MISSED APPROACH: Climb to 1600 direct NGP TACAN and turn left to intercept R-041 to RYNOL and hold.</p>	
		<p>ASR/PAR</p>	

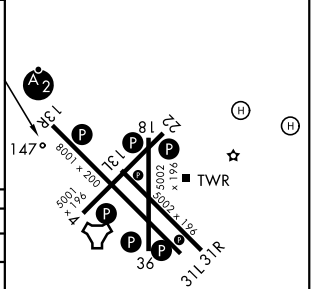
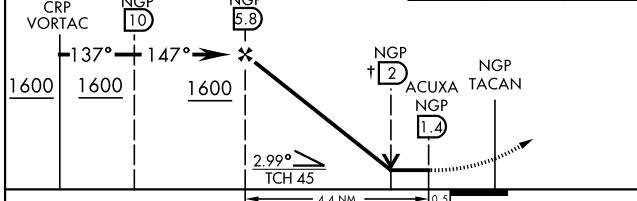
<p>ATIS★</p> <p>127.9 290.9</p>	<p>APP CON</p> <p>120.9 259.3</p>	<p>NAVY CORPUS TOWER★</p> <p>134.85 340.2</p>	<p>GND CON</p> <p>118.7 257.85</p>	<p>ASR/PAR</p>
--	--	--	---	----------------



↑ VDP not authorized when using Corpus Christi (CRP) Intl altimeter

1600	NGP	NGP R-041
------	-----	-----------

ELEV	18	TDZE	13
------	----	------	----



CATEGORY	A	B	C	D
S-13R *	400-¾	387 (400-¾)	400-⅞	387 (400-⅞)
CIRCLING	460-1 442 (500-1)	480-1 462 (500-1)	520-1½ 502 (600-1½)	580-2 562 (600-2)
CORPUS CHRISTI (CRP) INTL ALTIMETER SETTING				
S-13R *	420-¾	407 (500-¾)	420-1	407 (500-1)
CIRCLING	500-1	482 (500-1)	540-1½ 522 (600-1½)	620-2 602 (700-2)

HIRL Rwy 4-22, 13R-31L
 HIRL Rwy 13L-31R, 18-36
 REIL Rwy 13L-31R
 REIL Rwy 4-22, 18-36, 31L

TACAN Z RWY 13R

SC-3, 14 MAY 2026 to 11 JUN 2026

SC-3, 14 MAY 2026 to 11 JUN 2026