

CORPUS CHRISTI, TEXAS

# VOR/DME or TACAN Y RWY 13R

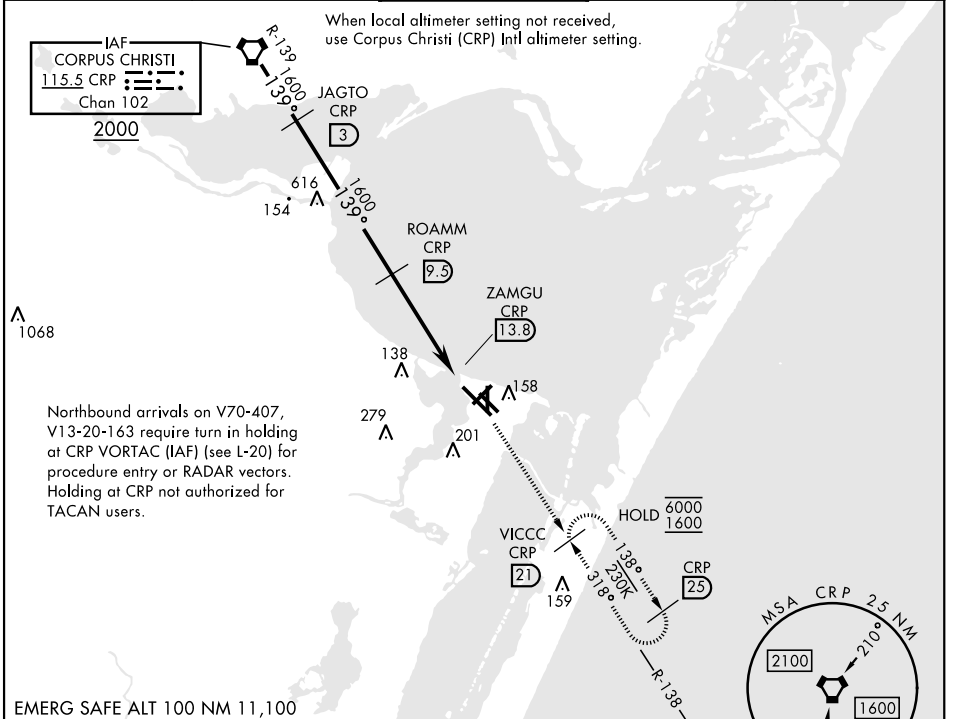
VORTAC CRP <b>115.5</b> Chan <b>102</b>	APCH CRS <b>139°</b>	Rwy Idg <b>8001</b> TDZE <b>13</b> Arpt Elev <b>18</b>
---	-------------------------	--

[USN]

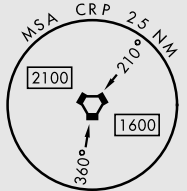
CORPUS CHRISTI NAS (TRUAX FLD) (KNGP)

<p>▼ * When ALS inop, increase CAT AB vis to 1 mile, CAT CD vis to 1½ miles. ** When ALS inop, increase CAT AB vis to 1 mile, CAT CD vis to 1¾ miles.</p>	SALSF A2	MISSED APPROACH: Climb to 1600 on CRP VORTAC R-138 to VICCC and hold.
---	-------------	---

ATIS ★ <b>127.9 290.9</b>	APP CON <b>120.9 259.3</b>	NAVY CORPUS TOWER ★ <b>134.85 340.2</b>	GND CON <b>118.7 257.85</b>	ASR/PAR
------------------------------	-------------------------------	--	--------------------------------	---------

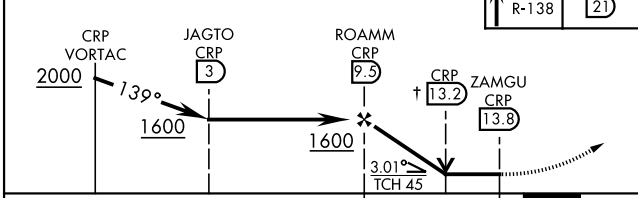


Northbound arrivals on V70-407, V13-20-163 require turn in holding at CRP VORTAC (IAF) (see L-20) for procedure entry or RADAR vectors. Holding at CRP not authorized for TACAN users.

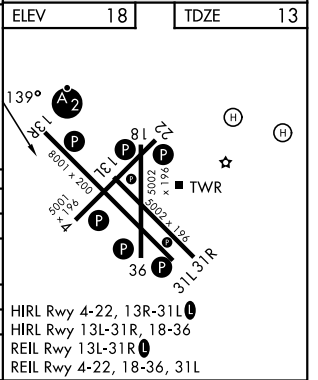


EMERG SAFE ALT 100 NM 11,100

† VDP not authorized when using Corpus Christi (CRP) Intl altimeter setting.



CATEGORY	A	B	C	D
S-13R *	420-¾ 407	500-¾ 480-1	420-1 407	500-1 580-2
CIRCLING	442 (500-1)	462 (500-1)	502 (600-1½)	562 (600-2)
CORPUS CHRISTI (CRP) INTL ALTIMETER SETTING				
S-13R **	460-¾ 447	500-1¾ 482	460-1 447	500-1 620-2
CIRCLING	500-1	482 (500-1)	522 (600-1½)	602 (700-2)



CORPUS CHRISTI, TEXAS  
Amdt 2 30NOV23

27°42'N-97°17'W

CORPUS CHRISTI NAS (TRUAX FLD) (KNGP)

# VOR/DME or TACAN Y RWY 13R

SC-3, 14 MAY 2026 to 11 JUN 2026

SC-3, 14 MAY 2026 to 11 JUN 2026