

|  |                        |   |
|--|------------------------|---|
| WAAS<br>CH <b>82529</b><br><b>W03A</b> | APP CRS<br><b>026°</b> | Rwy Ldg<br>TDZE <b>1503</b><br>Apt Elev <b>1503</b> |
|--|------------------------|---|

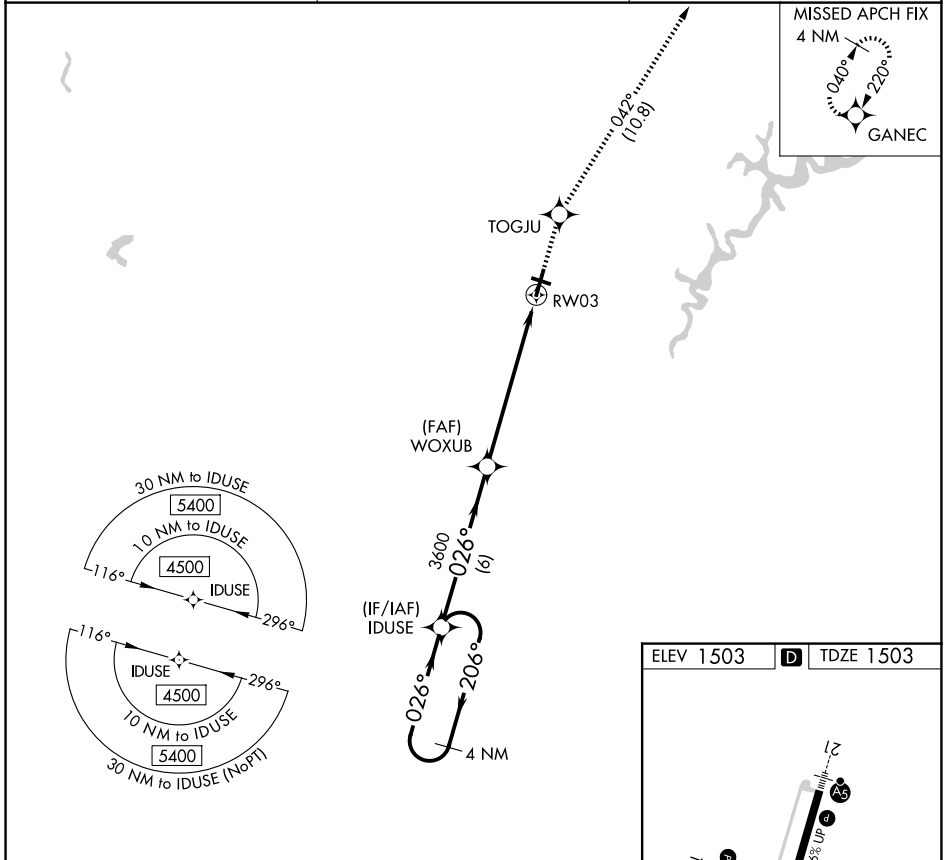
# RNAV (GPS) Z RWY 3

ALTOONA/BLAIR COUNTY (A00)

**⚠** Rwy 3 helicopter visibility reduction below 3/4 SM NA. DME/DME RNP-0.3 NA. When local altimeter setting not received, use Bedford County altimeter setting and increase all DA 84 feet, and increase all visibilities 3/8 mile.

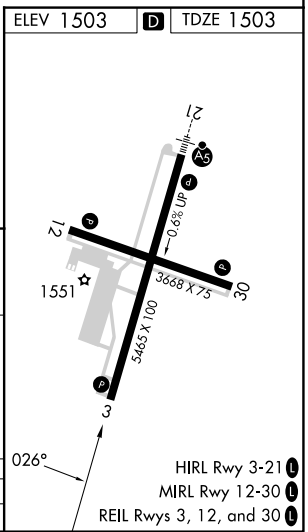
**MISSED APPROACH:** Climb to 5000 direct TOGJU and on track 042° to GANEC and hold, continue climb-in-hold to 5000.

|                        |   |                       |
|------------------------|---|-----------------------|
| ASOS<br><b>127.125</b> | JOHNSTOWN APP CON ★<br><b>121.2 299.2</b> | CTAF<br><b>123.60</b> |
|------------------------|---|-----------------------|



NE-4, 14 MAY 2026 to 11 JUN 2026

NE-4, 14 MAY 2026 to 11 JUN 2026



|  |        |            |             |         |       |
|--|--------|------------|-------------|---------|-------|
| VGSI and RNAV glidepath not coincident (VGSI Angle 3.00/TCH 43). |        | 5000       | TOGJU       | tr 042° | GANEC |
| 4 NM Holding Pattern   | IDUSE  |            |             |         |       |
| 4500 ← 206°  | → 026° | WOXUB 3600 | RWY 3       |         |       |
| GP 3.00°   | TCH 55 | 3600       |             |         |       |
|  |        | 6 NM       | 6.4 NM      |         |       |
| CATEGORY   | A      | B          | C           | D       |       |
| LPV DA   |        | 1828-1     | 325 (400-1) |         |       |

HIRL Rwy 3-21 **1**  
MIRL Rwy 12-30 **1**  
REIL Rws 3, 12, and 30 **1**