

BACHMAN TWO DEPARTURE  
(BACH2, TTT) 27NOV25

LONE STAR DEP CON  
118.55 290.35  
D-ATIS  
120.15  
CLNC DEL  
127.9  
GND CON  
121.75 348.6  
LOVE TOWER  
123.7 239.3

DME and RADAR required.

LITTLE ROCK  
115.1 UT  
Chan 98

TOP ALTITUDE:  
6000

(BACH2, TTT) 25331  
BACHMAN TWO DEPARTURE

A1-106 (FAA)

DALLAS LOVE FLD (DAL)  
DALLAS, TEXAS

BONHAM  
114.6 BYP  
Chan 93

FL183  
\*2600  
057°  
(122)

TEXARKANA  
116.3 TXK  
Chan 110

TAKEOFF MINIMUMS  
Rwy 13R: Standard with minimum climb of  
315'/NM to 1700.

NOTE: Do not file - To be assigned by ATC normally between 2100-0600 LCL time.  
NOTE: SOLDO Transition: ATC assigned.  
NOTE: BELCHER Transition: For aircraft inbound to Jackson, Monroe and Shreveport terminal areas.

COWBOY  
116.2 CVE  
Chan 109

MAVERICK  
113.1 TTT  
Chan 78

LOCALIZER 111.1  
I-DPX  
Chan 48

NOBLY

TRISS

SHERO

SOLDO

CLARE

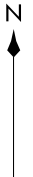
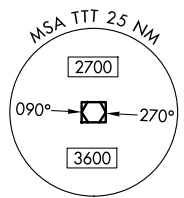
POTEN (44)

TEKBE

SHRLY

GREGG COUNTY  
112.9 GGG  
Chan 76

BELCHER  
117.4 EIC  
Chan 121



NOTE: Chart not to scale.

(CONTINUED ON FOLLOWING PAGE)

DALLAS, TEXAS  
DALLAS LOVE FLD (DAL)

# BACHMAN TWO DEPARTURE



## DEPARTURE ROUTE DESCRIPTION

TAKEOFF RUNWAY 13R: Climb on heading 163° no later than I-DPX 0.7 DME outbound on I-DPX localizer southeast course to intercept and climb on CVE R-139 for RADAR vectors to appropriate route, maintain 6000, expect filed altitude 10 minutes after departure.

ALL AIRCRAFT: ATC climb gradient: If unable to accept climb rate advise ATC prior to taxi.

RUNWAY 13R: ATC climb of 482'/NM to 1700.

BELCHER TRANSITION (BACH2.EIC): From over TTT VOR/DME on TTT R-094 to POTEN, then on EIC R-259 to EIC VORTAC.

LITTLE ROCK TRANSITION (BACH2.LIT): From over TTT VOR/DME on TTT R-064 to ORTRO, then on LIT R-237 to LIT VORTAC.

SOLDO TRANSITION (BACH2.SOLDO): From over TTT VOR/DME on TTT R-084 to SOLDO.

TEXARKANA TRANSITION (BACH2.TXK): From over TTT VOR/DME on TTT R-074 to SHERO, then on TXK R-244 to TXK VORTAC.

SC-2, 14 MAY 2026 to 11 JUN 2026

SC-2, 14 MAY 2026 to 11 JUN 2026