

**TOP ALTITUDE:
ASSIGNED BY ATC**

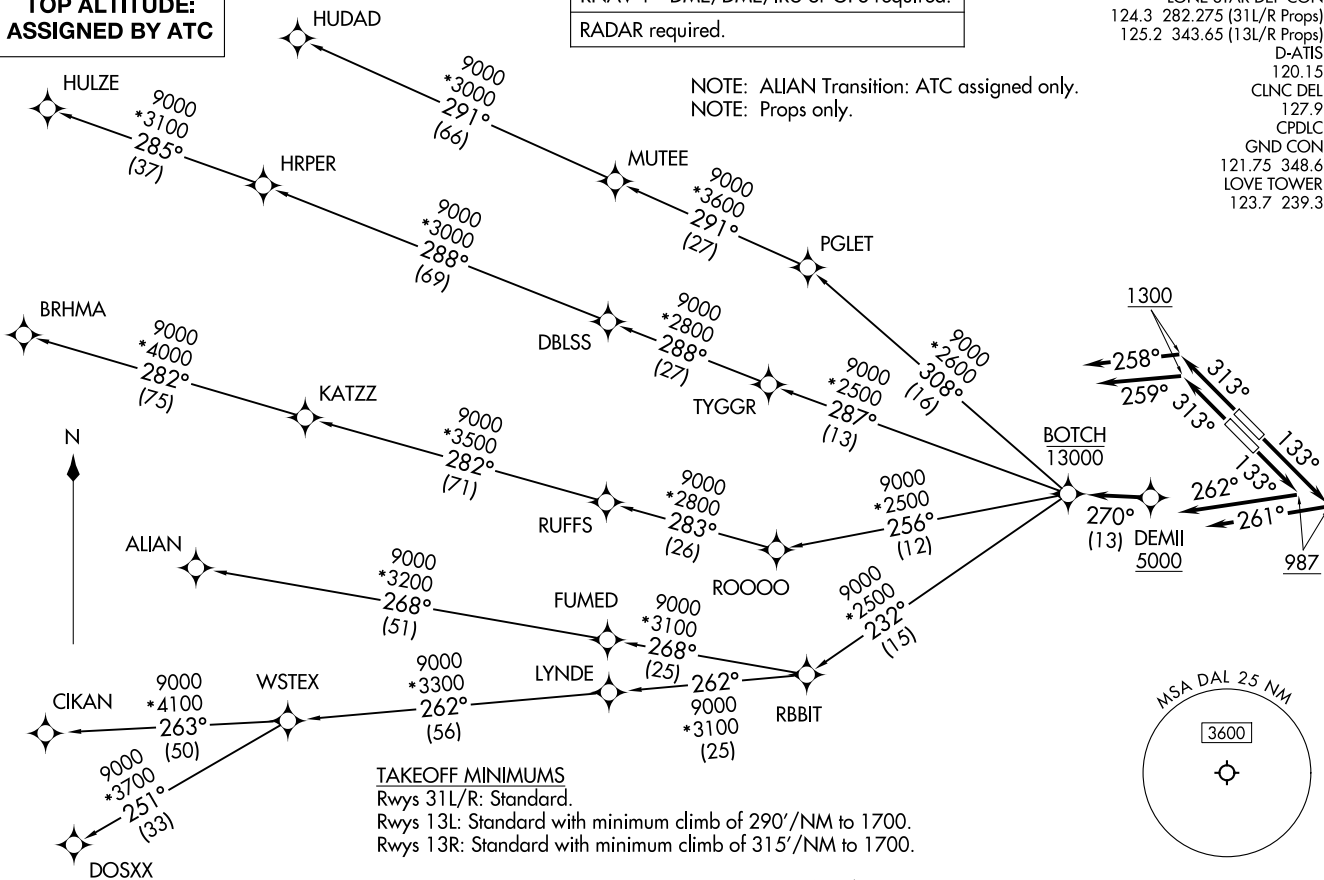
RNAV 1 - DME/DME/IRU or GPS required.
RADAR required.

LONE STAR DEP CON
124.3 282.275 (31L/R Props)
125.2 343.65 (13L/R Props)
D-ATIS
120.15
CLNC DEL
127.9
CPDLC
GND CON
121.75 348.6
LOVE TOWER
123.7 239.3

NOTE: ALIAN Transition: ATC assigned only.
NOTE: Props only.

BOTCH TWO DEPARTURE (RNAV)
(BOTCH2.BOTCH) 14MAY26

(BOTCH2.BOTCH) 26134
BOTCH TWO DEPARTURE (RNAV)
AL-106 (FAA)



DALLAS, TEXAS
DALLAS LOVE FLD (DAL)

DALLAS LOVE FLD (DAL)
DALLAS, TEXAS

(CONTINUED ON FOLLOWING PAGE)

BOTCH TWO DEPARTURE (RNAV)



DEPARTURE ROUTE DESCRIPTION

TAKEOFF RUNWAY 13L: Climb on heading 133° to 987, then on heading 261° or as assigned by ATC, for vectors to cross DEMII at or above 5000, thence. . .

TAKEOFF RUNWAY 13R: Climb on heading 133° to 987, then on heading 262° or as assigned by ATC, for vectors to cross DEMII at or above 5000, thence. . .

TAKEOFF RUNWAY 31L: Climb on heading 313° to 1300, then on heading 259° or as assigned by ATC, for vectors to cross DEMII at or above 5000, thence. . .

TAKEOFF RUNWAY 31R: Climb on heading 313° to 1300, then on heading 258° or as assigned by ATC, for vectors to cross DEMII at or above 5000, thence. . .

. . .on track 270° to cross BOTCH at or below 13000, then on (transition). Maintain ATC assigned altitude, expect filed altitude 10 minutes after departure.

ALIAN TRANSITION (BOTCH2.ALIAN)

BRHMA TRANSITION (BOTCH2.BRHMA)

CIKAN TRANSITION (BOTCH2.CIKAN)

DOSXX TRANSITION (BOTCH2.DOSXX)

HUDAD TRANSITION (BOTCH2.HUDAD)

HULZE TRANSITION (BOTCH2.HULZE)

WSTEX TRANSITION (BOTCH2.WSTEX)

SC-2, 14 MAY 2026 to 11 JUN 2026

SC-2, 14 MAY 2026 to 11 JUN 2026