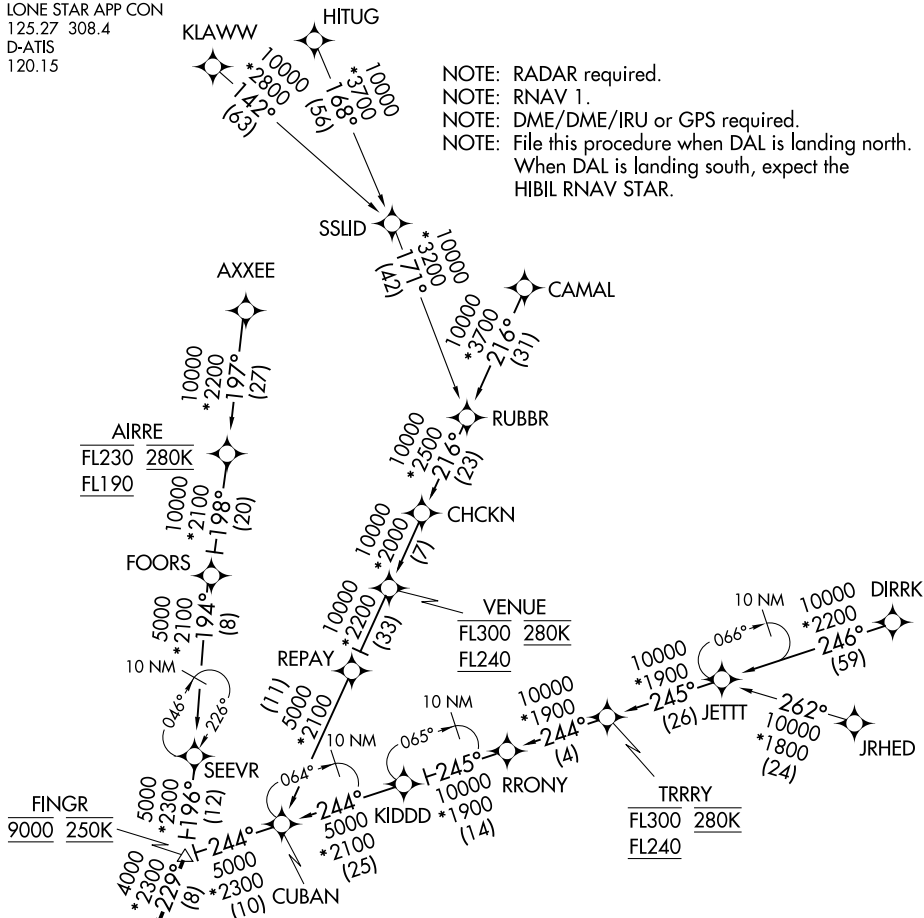


CRIKT ONE ARRIVAL (RNAV)

LONE STAR APP CON
125.27 308.4
D-ATIS
120.15

NOTE: RADAR required.
NOTE: RNAV 1.
NOTE: DME/DME/IRU or GPS required.
NOTE: File this procedure when DAL is landing north.
When DAL is landing south, expect the HIBIL RNAV STAR.



NOTE: JRHED, RUBBR, and JETTT Transitions: ATC assigned only.
NOTE: AXSEE and RRONY Transitions: For aircraft filing FL230 and below.
NOTE: AIRRE Transition: For traffic below FL190 only.
NOTE: Aircraft departing the Oklahoma City terminal area file and expect the AIRRE enroute transition.

ARRIVAL ROUTE DESCRIPTION

<u>AIRRE TRANSITION (AIRRE.CRIKT1)</u>	<u>JETTT TRANSITION (JETTT.CRIKT1)</u>
<u>AXSEE TRANSITION (AXSEE.CRIKT1)</u>	<u>JRHED TRANSITION (JRHED.CRIKT1)</u>
<u>CAMAL TRANSITION (CAMAL.CRIKT1)</u>	<u>KLAWW TRANSITION (KLAWW.CRIKT1)</u>
<u>DIRRK TRANSITION (DIRRK.CRIKT1)</u>	<u>RRONY TRANSITION (RRONY.CRIKT1)</u>
<u>HITUG TRANSITION (HITUG.CRIKT1)</u>	<u>RUBBR TRANSITION (RUBBR.CRIKT1)</u>

From FINGR on track 229° to SLANT, then on track 193° to CRIKT, then on track 193°. Expect RADAR vectors to final approach course.

NOTE: Chart not to scale.

CRIKT ONE ARRIVAL (RNAV)

(FINGR.CRIKT1) 31MAR16

SC-2, 14 MAY 2026 to 11 JUN 2026

SC-2, 14 MAY 2026 to 11 JUN 2026