

DALLAS FOUR DEPARTURE
(DALL4.TTT) 27NOV25

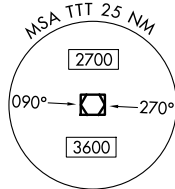
DALLAS, TEXAS
DALLAS LOVE FLD (DAL)

LONE STAR DEP CON
118.55 290.35
D-ATIS
120.15
CLINC DEL
127.9
CPDLC
GND CON
121.75 348.6
LOVE TOWER
123.7 239.3

RADAR and DME required.

NOTE: BELCHER Transition: For aircraft inbound to the JAN, MLU, and SHV terminal areas only.
NOTE: SOLDO Transition: ATC assigned.

LITTLE ROCK
115.1 LIT
Chan 98



TEXARKANA
116.3 TXK
Chan 110

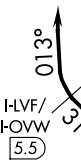
TOP ALTITUDE:
RWYS 13L/R: 8000
RWYS 31L/R: ASSIGNED BY ATC

TAKEOFF MINIMUMS

Rwys 31L/R: Standard.
Rwy 13L: Standard with minimum climb of 290'/NM to 1700.
Rwy 13R: Standard with minimum climb of 315'/NM to 1700.

BONHAM
114.6 BYP
Chan 93

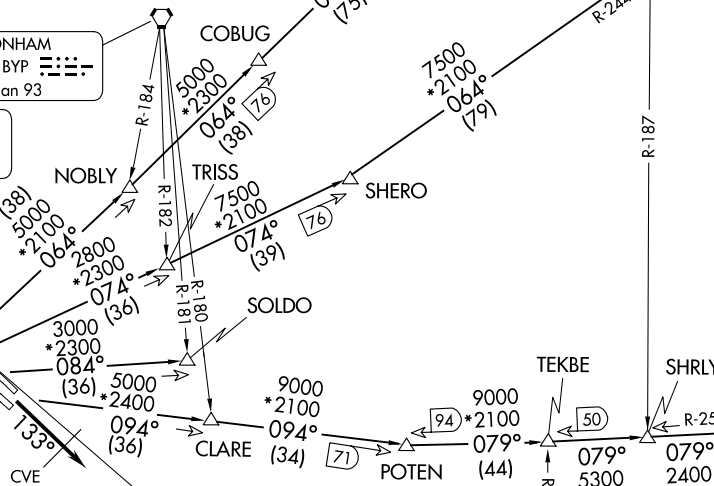
COWBOY
116.2 CVE
Chan 109



MAVERICK
113.1 TTT
Chan 78

LOCALIZER 111.1
H-LVF
Chan 48

LOCALIZER 111.5
H-OVW
Chan 52



GREGG COUNTY
112.9 GGG
Chan 76

BELCHER
117.4 EIC
Chan 121

(CONTINUED ON FOLLOWING PAGE)

NOTE: Chart not to scale.

(DALL4.TTT) 25331

AL-106 (FAA)

DALLAS LOVE FLD (DAL)
DALLAS, TEXAS

DALLAS FOUR DEPARTURE



DEPARTURE ROUTE DESCRIPTION

JETS:

TAKEOFF RUNWAYS 13L/R: Climb on heading 133°, cross CVE 13 DME at or below 6000, then maintain 8000 for RADAR vectors to appropriate route and expect filed altitude 10 minutes after departure.

TAKEOFF RUNWAYS 31L/R: Climb on heading 313° until the I-LVF 5.5 DME or I-OVW 5.5 DME, then right turn heading 013° for RADAR vectors to the appropriate route, maintain ATC assigned altitude and expect filed altitude 10 minutes after departure.

BELCHER TRANSITION (DALL4.EIC): From over TTT VOR/DME on TTT R-094 to POTEN, then on EIC R-259 to EIC VORTAC.

LITTLE ROCK TRANSITION (DALL4.LIT): From over TTT VOR/DME on TTT R-064 to ORTRO, then on LIT R-237 to LIT VORTAC.

SOLDO TRANSITION (DALL4.SOLDO): From over TTT VOR/DME on TTT R-084 to SOLDO.

TEXARKANA TRANSITION (DALL4.TXK): From over TTT VOR/DME on TTT R-074 to SHERO, then on TXK R-244 to TXK VORTAC.

SC-2, 14 MAY 2026 to 11 JUN 2026

SC-2, 14 MAY 2026 to 11 JUN 2026