

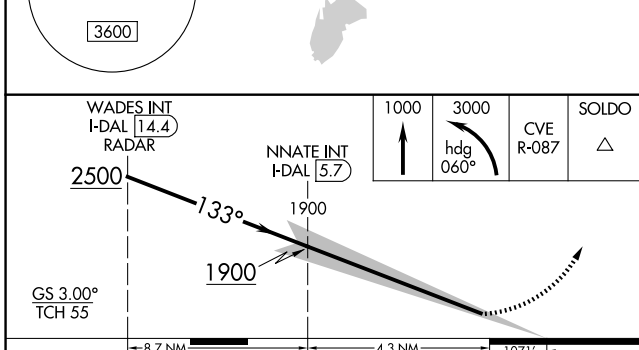
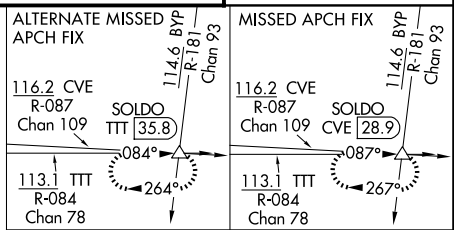
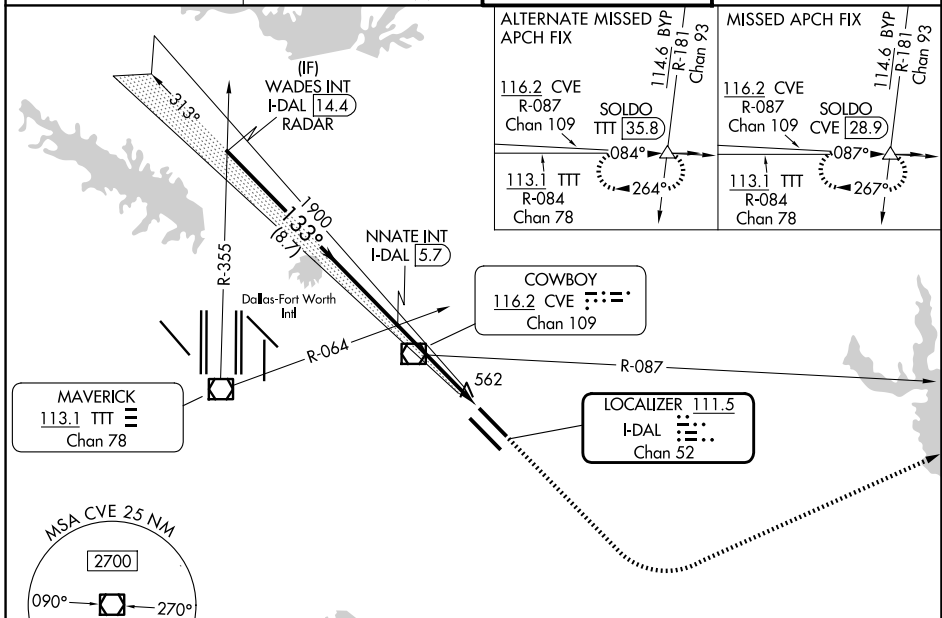
LOC/DME I-DAL	APP CRS	Rwy Ldg	7352
111.5	133°	TDZE	485
Chan 52		Apt Elev	487

ILS RWY 13L (SA CAT I & II)

DALLAS LOVE FLD (DAL)

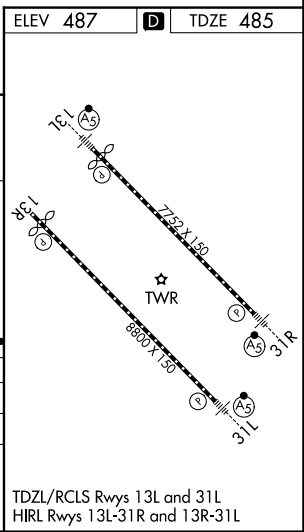
RADAR required for procedure entry.		MALSR	MISSED APPROACH: Climb to 1000 then climbing left turn to 3000 on heading 060° and CVE VOR/DME R-087 to SOLDO INT/CVE 28.9 DME and hold.
Simultaneous approach authorized, SA CAT I/II: Requires specific OPSPEC, MSPEC, or LOA approval.			

D-ATIS	LONE STAR APP CON	LOVE TOWER	GND CON
120.15	124.3 282.275 (N) 125.2 343.65 (S)	123.7 239.3	121.75 348.6



CATEGORY	A	B	C	D
S-ILS 13L	SA CAT I	RA 172/14	150 DA 635	
S-ILS 13L	SA CAT II	RA 136/12	100 DA 585	

SA CATEGORY I & II ILS SPECIAL AIRCREW & AIRCRAFT CERTIFICATION REQUIRED



SC-2, 14 MAY 2026 to 11 JUN 2026

SC-2, 14 MAY 2026 to 11 JUN 2026