

LOC/DME I-DAL 111.5 Chan 52	APP CRS 133°	Rwy Ldg TDZE Apt Elev	7352 485 487
--	------------------------	-----------------------------	---

ILS or LOC RWY 13L

DALLAS LOVE FLD (DAL)

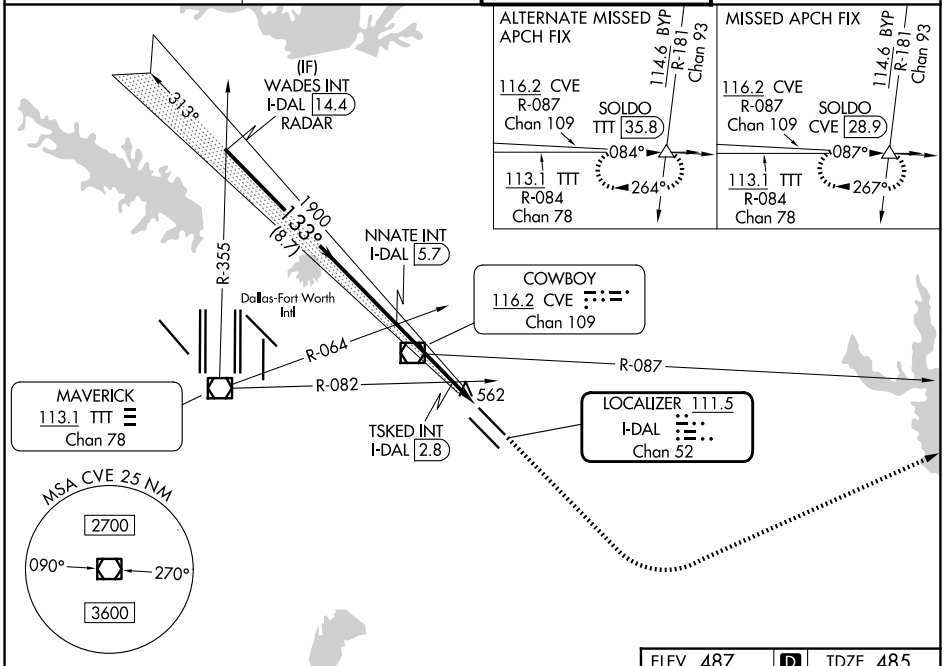
RADAR required for procedure entry.

Simultaneous approach authorized.

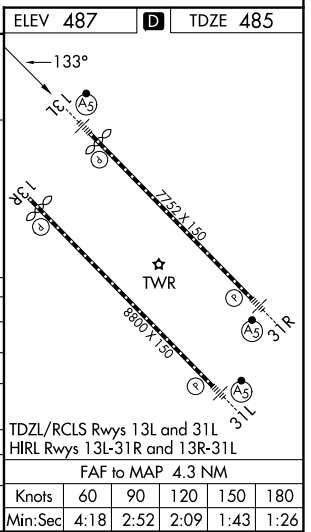
MALSR

MISSED APPROACH: Climb to 1000 then climbing left turn to 3000 on heading 060° and CVE VOR/DME R-087 to SOLDO INT/CVE 28.9 DME and hold.

D-ATIS 120.15	LONE STAR APP CON 124.3 282.275 (N) 125.2 343.65 (S)	LOVE TOWER 123.7 239.3	GND CON 121.75 348.6
-------------------------	--	----------------------------------	--------------------------------



WADES INT I-DAL 14.4 RADAR	1000	3000	CVE R-087	SOLDO
2500	↑	hdg 060°		△
GS 3.00° TCH 55	1900	TSKED INT I-DAL 2.8	I-DAL 2.3	I-DAL 1.4
→ 8.7 NM	→ 2.9 NM	→ 0.5	→ 0.9	
CATEGORY	A	B	C	D
S-ILS 13L	685/18		200 (200-½)	
S-LOC 13L	920/24	435 (500-½)	920/40	435 (500-¾)
CIRCLING	1000-1 513 (600-1)	1140-1 653 (700-1)	1280-2¼ 793 (800-2¼)	1520-3 1033 (1100-3)
TSKED FIX MINIMUMS (DUAL VOR RECEIVERS OR DME REQUIRED)				
S-LOC 13L	820/24	335 (400-½)	820/26	335 (400-½)
CIRCLING	1000-1 513 (600-1)	1140-1 653 (700-1)	1280-2¼ 793 (800-2¼)	1520-3 1033 (1100-3)



SC-2, 14 MAY 2026 to 11 JUN 2026

SC-2, 14 MAY 2026 to 11 JUN 2026

TDZL/RCLS Rwy 13L and 31L	HRL Rwy 13L-31R and 13R-31L				
FAF to MAP 4.3 NM					
Knots	60	90	120	150	180
Min:Sec	4:18	2:52	2:09	1:43	1:26