

LOC/DME I-DPX <b>111.1</b> Chan 48	APP CRS <b>133°</b>	Rwy Ldg 8310
		TDZE 479
		Apt Elev 487

# ILS or LOC RWY 13R

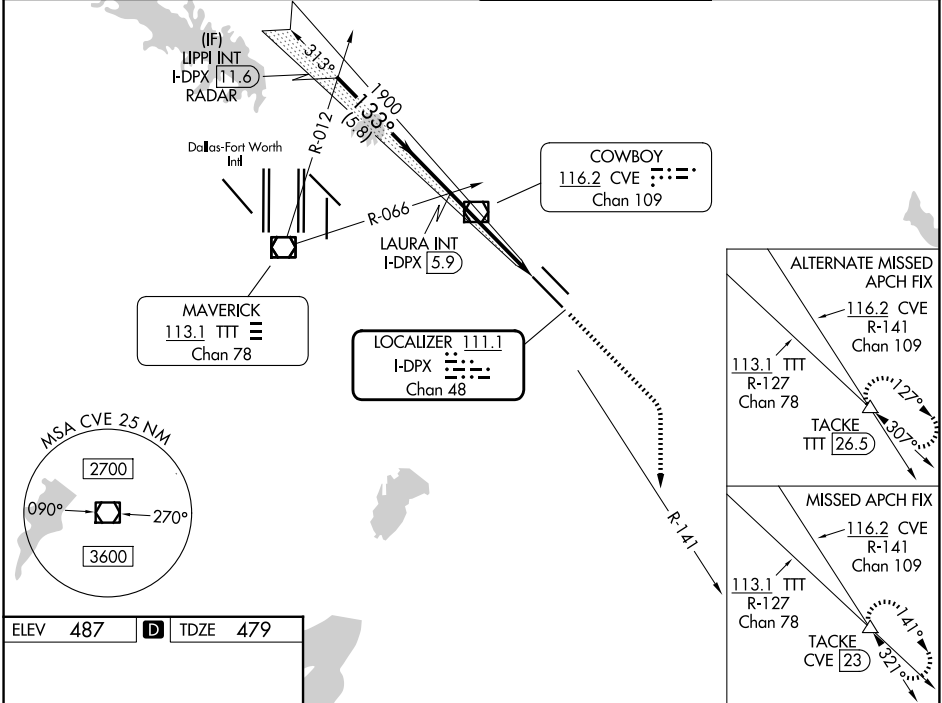
DALLAS LOVE FLD (DAL)

DME required.  
RADAR required for procedure entry.

Simultaneous approach authorized.

MISSED APPROACH: Climb to 1000 then climbing right turn to 3000 on heading 150° and CVE VOR/DME R-141 to TACKE/CVE 23 DME and hold.

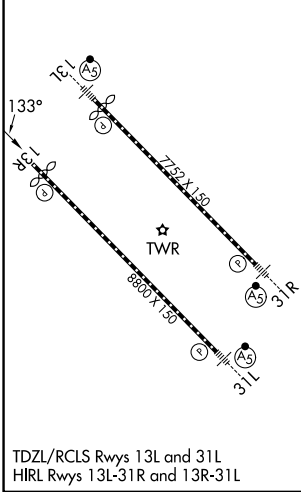
D-ATIS <b>120.15</b>	LONE STAR APP CON <b>124.3 282.275 (N)</b> <b>125.2 343.65 (S)</b>	LOVE TOWER <b>123.7 239.3</b>	GND CON <b>121.75 348.6</b>
-------------------------	--	----------------------------------	--------------------------------



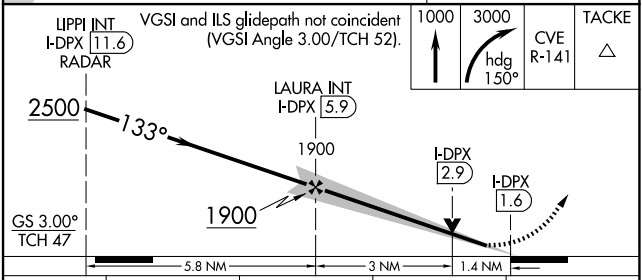
SC-2, 14 MAY 2026 to 11 JUN 2026

SC-2, 14 MAY 2026 to 11 JUN 2026

ELEV 487	<b>D</b>	TDZE 479
----------	----------	----------



TDZL/RCLS Rwy 13L and 31L  
HIRL Rwy 13L-31R and 13R-31L



CATEGORY	A	B	C	D
S-ILS 13R	679/40		200 (200-¾)	
S-LOC 13R	960/55	481 (500-1)	960-1⅓	481 (500-1⅓)
CIRCLING	1080-1 593 (600-1)	1140-1 653 (700-1)	1280-2¼ 793 (800-2¼)	1520-3 1033 (1100-3)