

| | | |
|---|------------------------|---|
| LOC/DME I-LVF 111.1 Chan 48 | APP CRS 313° | Rwy Ldg 8000 TDZE 477 Apt Elev 487 |
|---|------------------------|---|

ILS or LOC RWY 31L

DALLAS LOVE FLD (DAL)

RADAR required for procedure entry. DME required.

Simultaneous approach authorized.

MALSRR

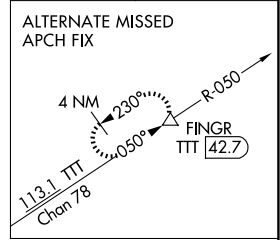
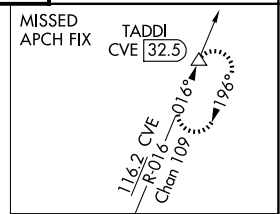
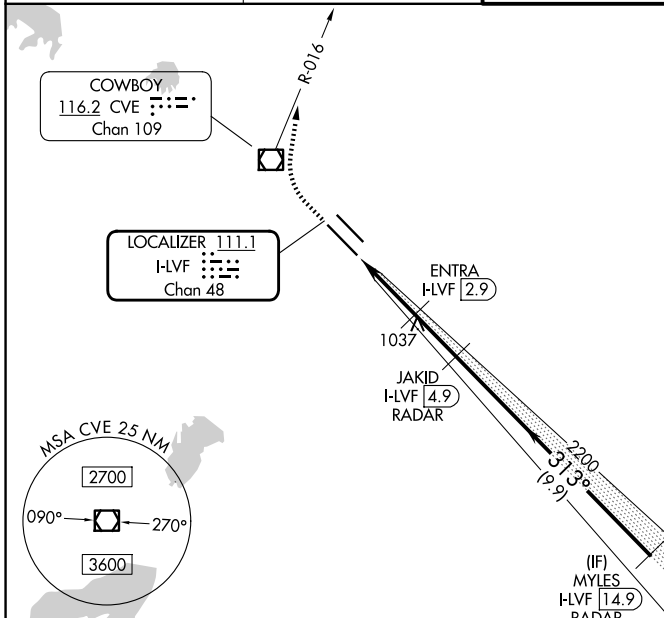
MISSED APPROACH: Climb to 4000 direct CVE VOR/DME and on CVE R-016 to TADDI/CVE 32.5 DME and hold.

D-ATIS
120.15

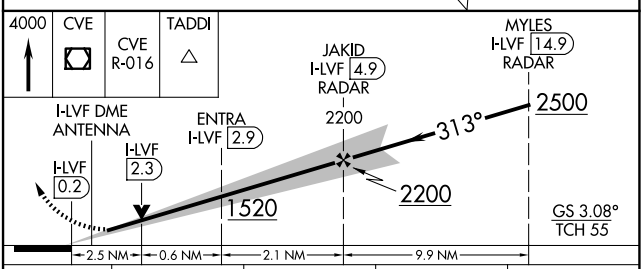
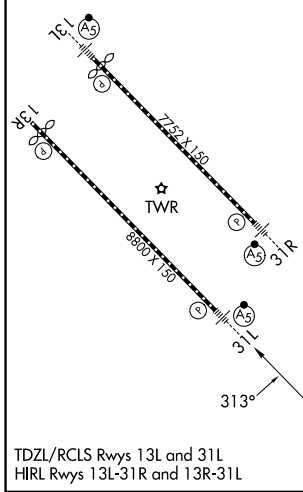
LONE STAR APP CON
124.3 282.275 (N)
125.2 343.65 (S)

LOVE TOWER
123.7 239.3

GND CON
121.75 348.6



ELEV **487** **D** TDZE **477**



| CATEGORY | A | B | C | D |
|-----------|------------------------|------------------------|-------------------------|-------------------------|
| S-ILS 31L | 677/18 200 (200-½) | | | |
| S-LOC 31L | 1340/24 863 (900-½) | 1340/40 863 (900-¾) | 1340-2 | 863 (900-2) |
| CIRCLING | 1340-1¼ | 853 (900-1¼) | 1340-2½ 853 (900-2½) | 1520-3 1033 (1100-3) |

SC-2, 14 MAY 2026 to 11 JUN 2026

SC-2, 14 MAY 2026 to 11 JUN 2026