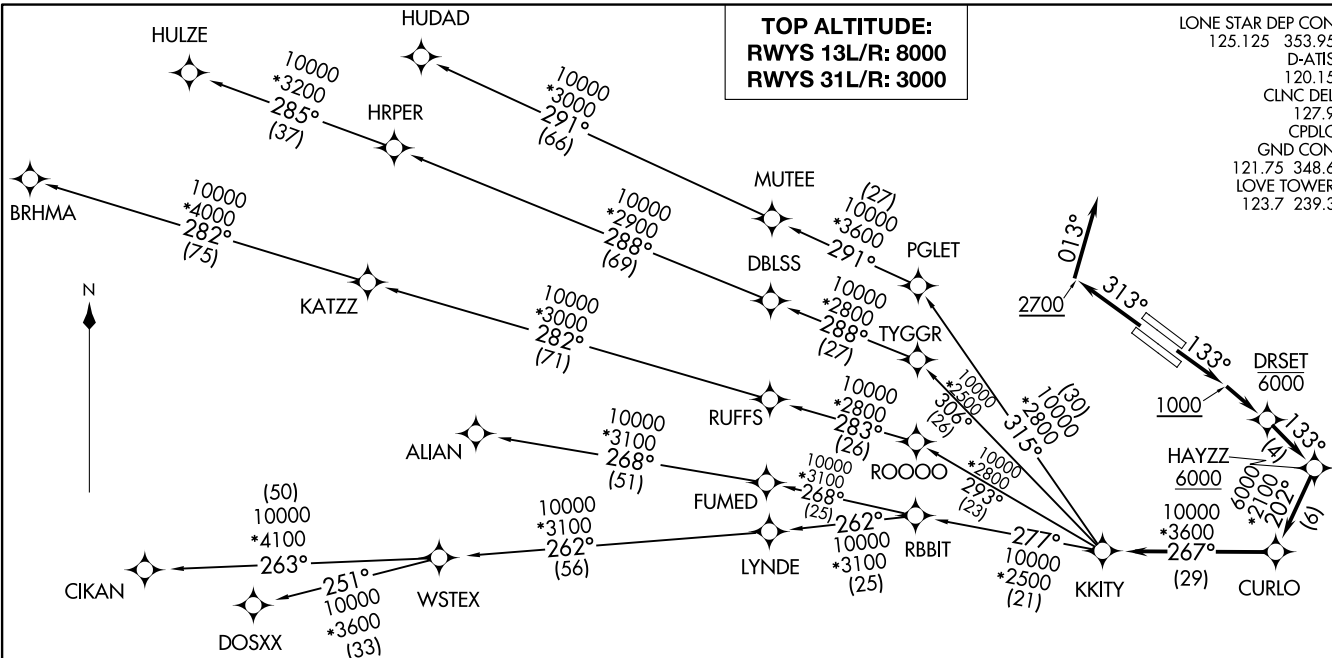


KKITY FIVE DEPARTURE (RNAV)
(KKITY5.KKITY) 05DEC19

DALLAS, TEXAS
DALLAS LOVE FLD (DAL)



- NOTE: RADAR required.
 NOTE: DME/DME/IRU or GPS required.
 NOTE: RNAV 1.
 NOTE: For use by turbojet aircraft only.
 NOTE: RNAV-capable props: File and expect the SWABR RNAV SID.
 NOTE: ALIAN Transition: ATC assigned only.
 NOTE: BRHMA Transition: For aircraft inbound to Lubbock terminal area.
 NOTE: Use WORTH DEPARTURE during the period 2100-0600 local time in lieu of the KKITY DEPARTURE.
 NOTE: WSTEX Transition: For aircraft inbound to Abilene and San Angelo terminal area airports only.

TAKEOFF MINIMUMS
 Rwy's 13L/R: Standard with minimum climb of 500' per NM to 1200.
 Rwy's 31L/R: Standard with minimum climb of 500' per NM to 1000.

(NARRATIVE ON FOLLOWING PAGE)

NOTE: Chart not to scale.

KKITY5.KKITY) 24305
 KKITY FIVE DEPARTURE (RNAV)

AL-106 (FAA)

DALLAS LOVE FLD (DAL)
 DALLAS, TEXAS

LONE STAR DEP CON
 125.125 353.95
 D-ATIS 120.115
 CLNC DEL 127.9
 CPDLC
 GND CON 121.75 348.6
 LOVE TOWER 123.7 239.3

KKITY FIVE DEPARTURE (RNAV)



DEPARTURE ROUTE DESCRIPTION

TAKEOFF RUNWAYS 13L/R: Climb on heading 133° to 1000, thence. . . .

. . . .direct to cross DRSET at or below 6000, then on track 133° to cross HAYZZ at or above 6000, then on track 202° to CURLO, then on track 267° to KKITY, then on (transition). Maintain 8000. Expect filed altitude 10 minutes after departure.

TAKEOFF RUNWAYS 31L/R: Climb on heading 313° to 2700, then heading 013° or as assigned by ATC, maintain 3000. Thence. . . .

. . . .expect RADAR vectors to cross HAYZZ at or above 6000, then on track 202° to CURLO, then on track 267° to KKITY, then on (transition). Expect filed altitude 10 minutes after departure.

ALIAN TRANSITION (KKITY5.ALIAN)

BRHMA TRANSITION (KKITY5.BRHMA)

CIKAN TRANSITION (KKITY5.CIKAN)

DOSXX TRANSITION (KKITY5.DOSXX)

HULZE TRANSITION (KITTY5.HULZE)

HUDAD TRANSITION (KKITY5.HUDAD)

WSTEX TRANSITION (KKITY5.WSTEX)

SC-2, 14 MAY 2026 to 11 JUN 2026

SC-2, 14 MAY 2026 to 11 JUN 2026