

KUSSO THREE DEPARTURE (RNAV)
(KUSSO3.KUSSO) 14MAY26

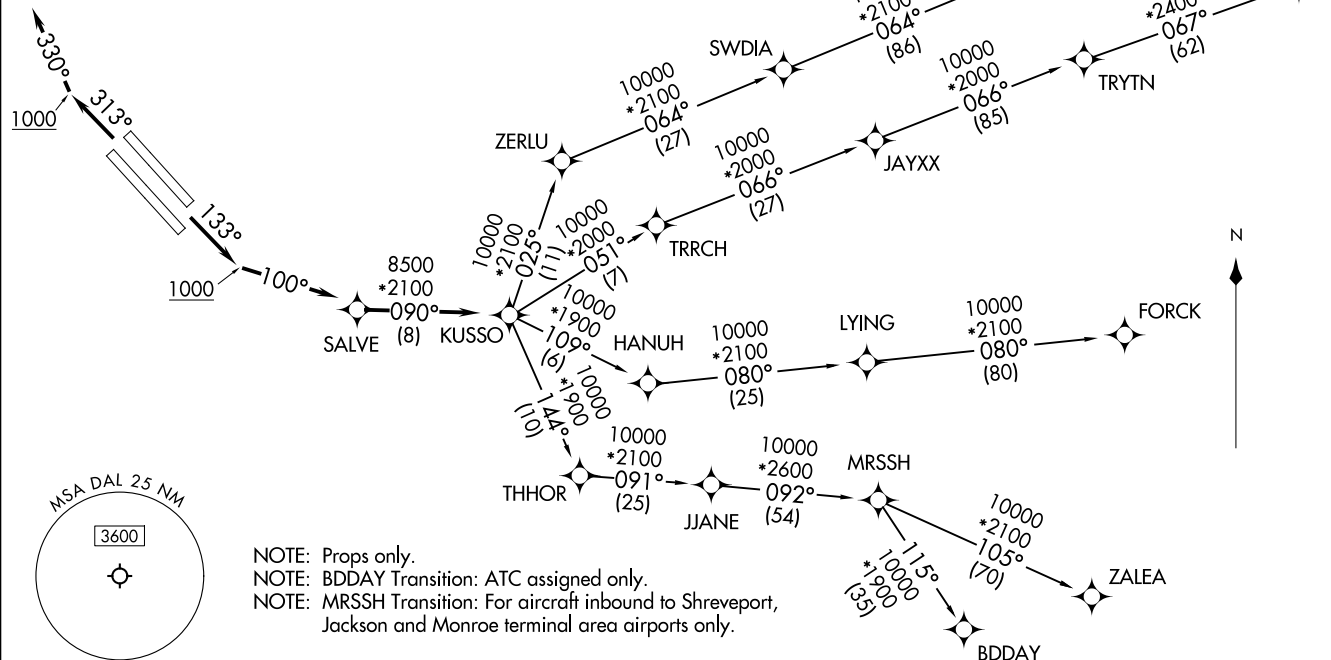
LONE STAR DEP CON
125.2 343.65 (13L/R)
124.3 282.275 (31L/R)
D-ATIS
120.15
CLNC DEL
127.9
CPDLC
GND CON
121.75 348.6
LOVE TOWER
123.7 239.3

RNAV 1 - DME/DME/IRU or GPS required.
RADAR required.

TOP ALTITUDE:
RWYS 13L/R: 3000
RWYS 31L/R: 2000

TAKEOFF MINIMUMS

Rwys 13L/R: Standard with a minimum climb of 500' per NM to 1200.
Rwys 31L/R: Standard with a minimum climb of 500' per NM to 1000.



NOTE: Props only.
NOTE: BDDAY Transition: ATC assigned only.
NOTE: MRSSH Transition: For aircraft inbound to Shreveport, Jackson and Monroe terminal area airports only.

(CONTINUED ON FOLLOWING PAGE)

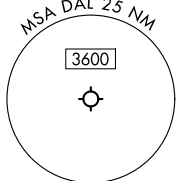
NOTE: Chart not to scale.

(KUSSO3.KUSSO) 26134
KUSSO THREE DEPARTURE (RNAV)

AL-106 (FAA)

DALLAS LOVE FLD (DAL)
DALLAS, TEXAS

DALLAS, TEXAS
DALLAS LOVE FLD (DAL)



KUSSO THREE DEPARTURE (RNAV)



DEPARTURE ROUTE DESCRIPTION

TAKEOFF RUNWAYS 13L/R: Climb on heading 133° to 1000, thence. . .

. . .left turn heading 100° or as assigned by ATC, expect RADAR vectors to SALVE, then on track 090° to KUSSO, then on (transition). Maintain 3000. Expect filed altitude 10 minutes after departure.

TAKEOFF RUNWAYS 31L/R: Climb on heading 313° to 1000, thence. . .

. . .right turn heading 330° or as assigned by ATC, expect RADAR vectors to SALVE, then on track 090° to KUSSO, then on (transition). Maintain 2000. Expect filed altitude 10 minutes after departure.

- BDDAY TRANSITION (KUSSO3.BDDAY)
- BSKAT TRANSITION (KUSSO3.BSKAT)
- FORCK TRANSITION (KUSSO3.FORCK)
- LOOSE TRANSITION (KUSSO3.LOOSE)
- MRSSH TRANSITION (KUSSO3.MRSSH)
- ZALEA TRANSITION (KUSSO3.ZALEA)

SC-2, 14 MAY 2026 to 11 JUN 2026

SC-2, 14 MAY 2026 to 11 JUN 2026