

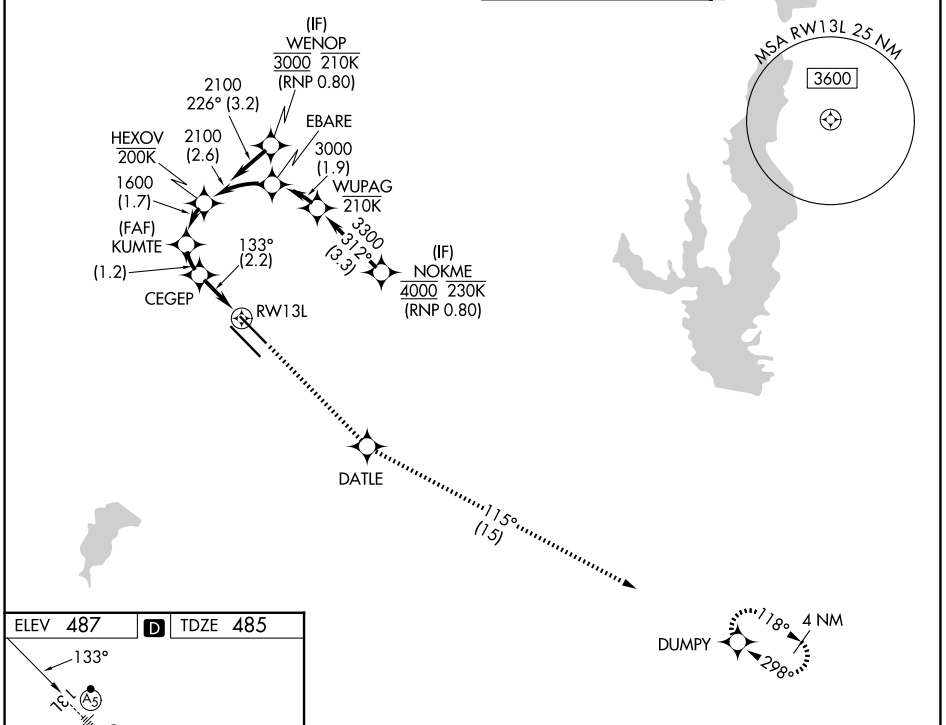
APP CRS	Rwy Ldg	7352
	TDZE	485
133°	Apt Elev	487

RNAV (RNP) W RWY 13L

DALLAS LOVE FLD (DAL)

RNP AR APCH. RF required.		MALSR 	MISSED APPROACH: Climb to 3000 direct DATLE and on track 115° to DUMPY and hold.
Simultaneous approach authorized. For uncompensated Baro-VNAV systems, procedure NA below -6°C or above 54°C. For inop ALS, increase RNP 0.11 all Cats visibility to RVR 4500.			

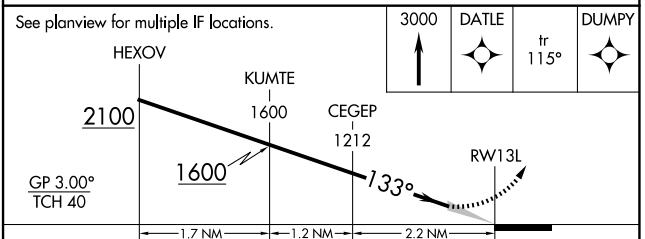
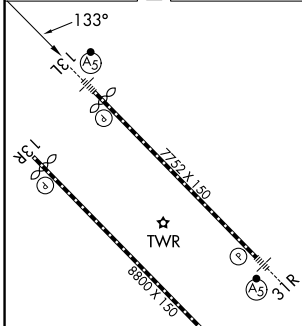
D-ATIS	LONE STAR APP CON	LOVE TOWER	GND CON
120.15	124.3 282.275 (N) 125.2 343.65 (S)	123.7 239.3	121.75 348.6



SC-2, 14 MAY 2026 to 11 JUN 2026

SC-2, 14 MAY 2026 to 11 JUN 2026

ELEV	487	D	TDZE	485
------	------------	----------	------	------------



CATEGORY	A	B	C	D
RNP 0.11 DA	754/24		269 (300-1/2)	
RNP 0.30 DA	846/40		361 (400-3/4)	

TDZL/RCLS Rwws 13L and 31L
 HIRL Rwws 13L-31R, and 13R-31L

RNAV (RNP) W RWY 13L