

APP CRS 133°	Rwy Ldg TDZE Apt Elev	8310 478 487
------------------------	-----------------------------	---

RNAV (RNP) W RWY 13R

DALLAS LOVE FLD (DAL)

▼ For uncompensated Baro-VNAV systems, procedure NA below -5°C (23°F) or above 54°C (130°F). Simultaneous approach authorized. RF required. GPS required. Use of FD or AP providing RNAV track guidance required during simultaneous operations.

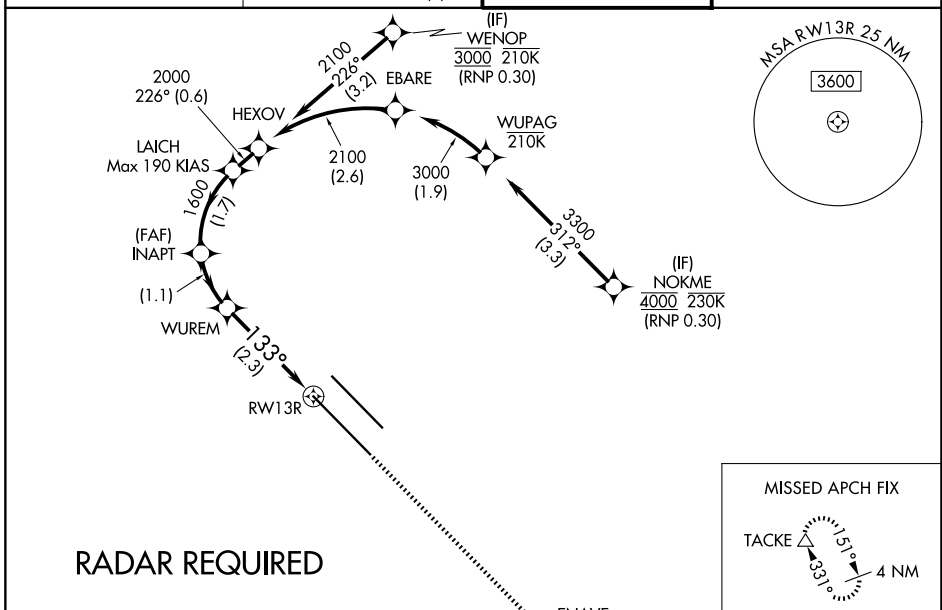
MISSED APPROACH: Climb to 3000 direct ENAVE and on track 151° to TACKE and hold.

D-ATIS 120.15

LONE STAR APP CON 124.3 282.275 (N) 125.2 343.65 (S)
--

LOVE TOWER 123.7 239.3

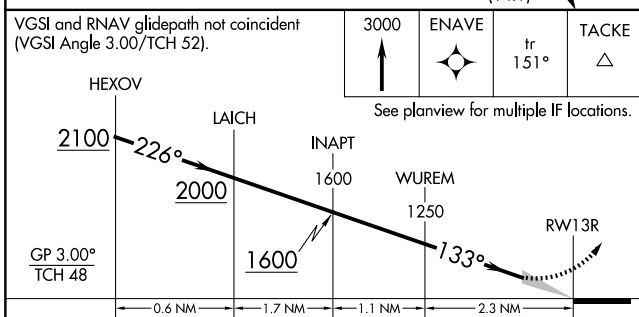
GND CON 121.75 348.6



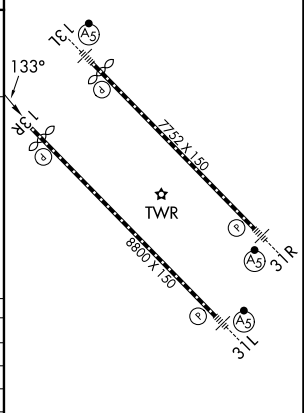
VGSI and RNAV glidepath not coincident (VGSI Angle 3.00/TCH 52).

3000	ENAVE	tr 151°	TACKE
------	-------	---------	-------

See planview for multiple IF locations.



ELEV 487	D	TDZE 478
----------	---	----------



CATEGORY	A	B	C	D
RNP 0.20 DA		781/50	303 (300-1)	
RNP 0.25 DA		833/60	355 (400-1½)	
RNP 0.30 DA		929-1½	451 (500-1½)	

AUTHORIZATION REQUIRED

TDZL/RCLS Rwy 13L and 31L
HIRL Rwy 13L-31R, and 13R-31L