

APP CRS 133°	Rwyt Ldg 8310
	TDZE 478
	Apt Elev 487

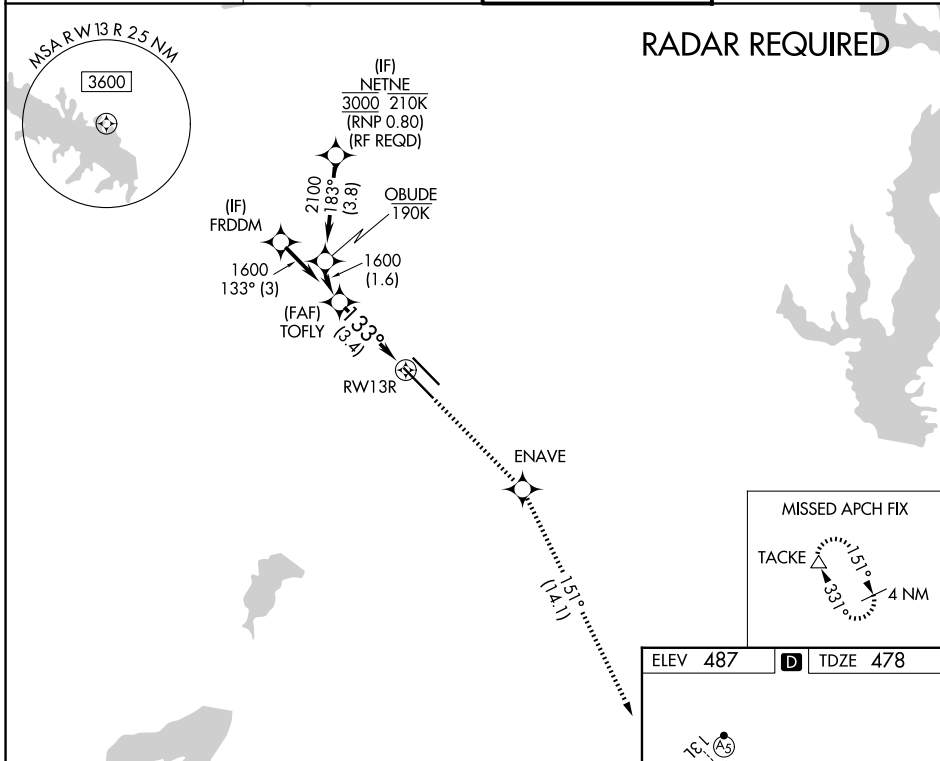
RNAV (RNP) X RWY 13R

DALLAS LOVE FLD (DAL)

▼ For uncompensated Baro-VNAV systems, procedure NA below -5°C (23°F) or above 54°C (130°F). Simultaneous approach authorized. GPS required. Use of FD or AP providing RNAV track guidance required during simultaneous operations.

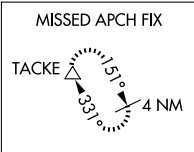
MISSED APPROACH: Climb to 3000 direct ENAVE and on track 151° to TACKE and hold.

D-ATIS 120.15	LONE STAR APP CON 124.3 282.275 (N) 125.2 343.65 (S)	LOVE TOWER 123.7 239.3	GND CON 121.75 348.6
-------------------------	--------------------------------------------------------------------------	----------------------------------	--------------------------------



SC-2, 14 MAY 2026 to 11 JUN 2026

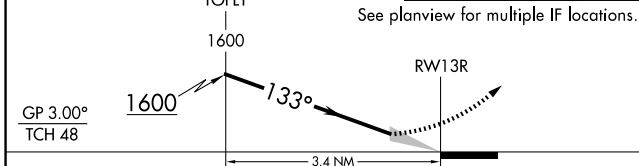
SC-2, 14 MAY 2026 to 11 JUN 2026



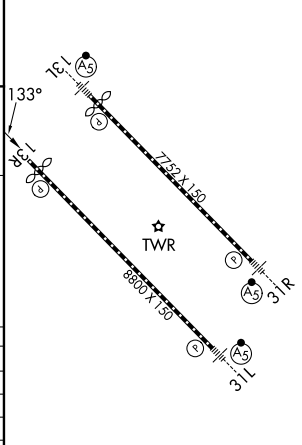
ELEV 487	D TDZE 478
----------	-------------------

VGSI and RNAV glidepath not coincident (VGSI Angle 3.00/TCH 52).

3000	ENAVE	TACKE
↑	✧	△
	tr	151°



CATEGORY	A	B	C	D
RNP 0.20 DA		781/50	303 (300-1)	
RNP 0.25 DA		833/60	355 (400-1½)	
RNP 0.30 DA		929-1½	451 (500-1½)	



AUTHORIZATION REQUIRED

TDZL/RCLS Rwy 13L and 31L
HIRL Rwy 13L-31R, and 13R-31L