


RNAV (RNP) Z RWY 31R

DALLAS LOVE FLD (DAL)

APP CRS 313°	Rwy Ldg 6952
	TDZE 487
	Apt Elev 487

RNP AR APCH.
 ▼ For uncompensated Baro-VNAV systems, procedure NA below -5°C (23°F) or above 54°C (130°F). Use of FD or AP providing RNAV track guidance required during simultaneous operations. Simultaneous approach authorized.

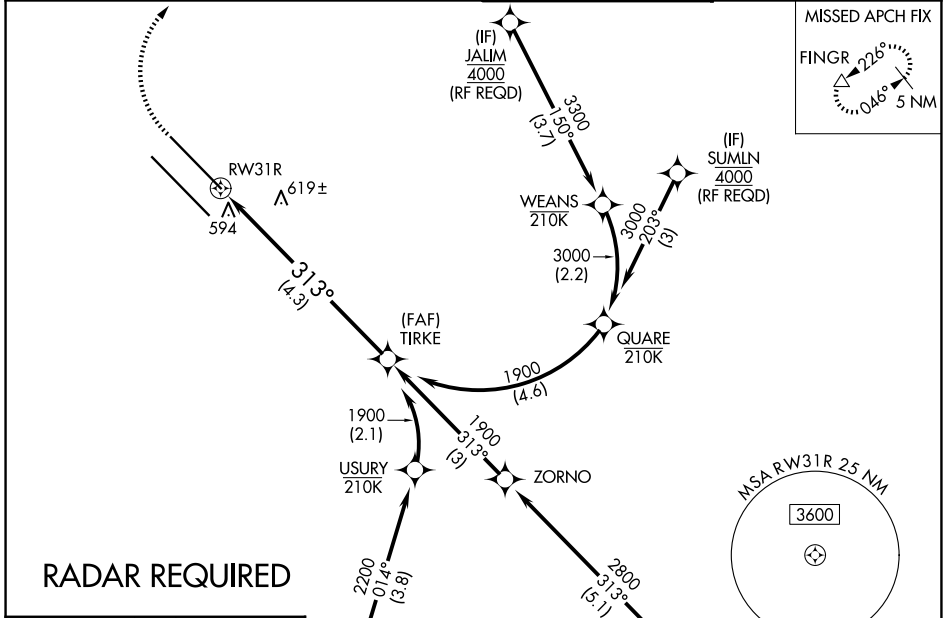
MALSR

 MISSED APPROACH: Climb to 900 then climbing right turn to 5000 direct FINGR and hold.

D-ATIS
120.15

LONE STAR APP CON
124.3 282.275 (N)
125.2 343.65 (S)

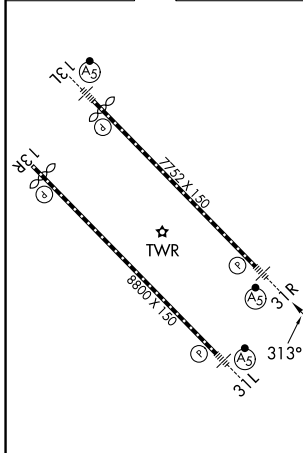
LOVE TOWER
123.7 239.3

GND CON
121.75 348.6



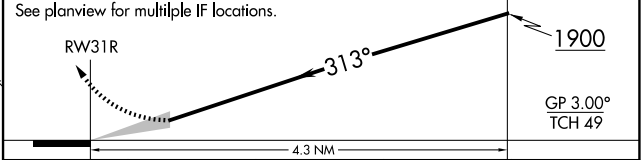
RADAR REQUIRED

ELEV 487 **D** TDZE 487



(IF) DWNTN 3000 (RF REQD)
 (IF) KELHR
 (IF) JALIM 4000 (RF REQD)
 (IF) SUMLN 4000 (RF REQD)

900 5000 FINGR
 VGSI and RNAV glidepath not coincident (VGSI Angle 3.00/TCH 55).
 See planview for multiple IF locations.



CATEGORY	A	B	C	D
RNP 0.16 DA		796/24	309 (400-½)	
RNP 0.30 DA		895/45	408 (500-¾)	

AUTHORIZATION REQUIRED

DALLAS, TEXAS
 Orig-C 31JAN19

32°51'N-96°51'W

DALLAS LOVE FLD (DAL)
RNAV (RNP) Z RWY 31R

SC-2, 14 MAY 2026 to 11 JUN 2026

SC-2, 14 MAY 2026 to 11 JUN 2026